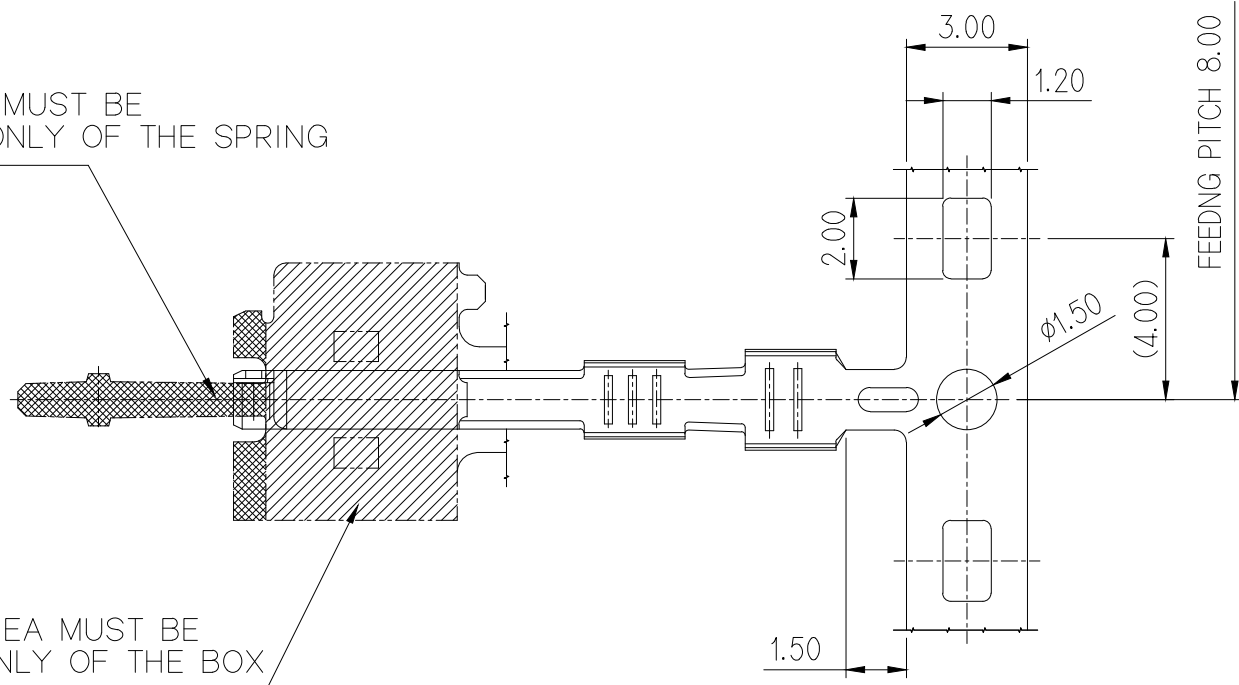


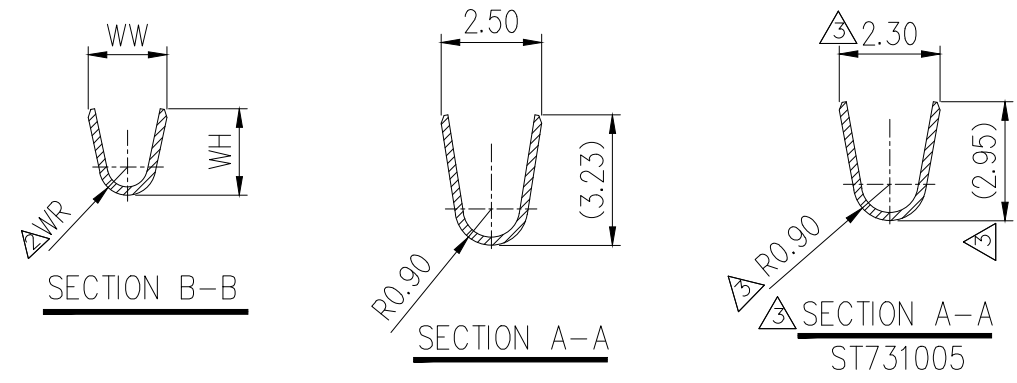
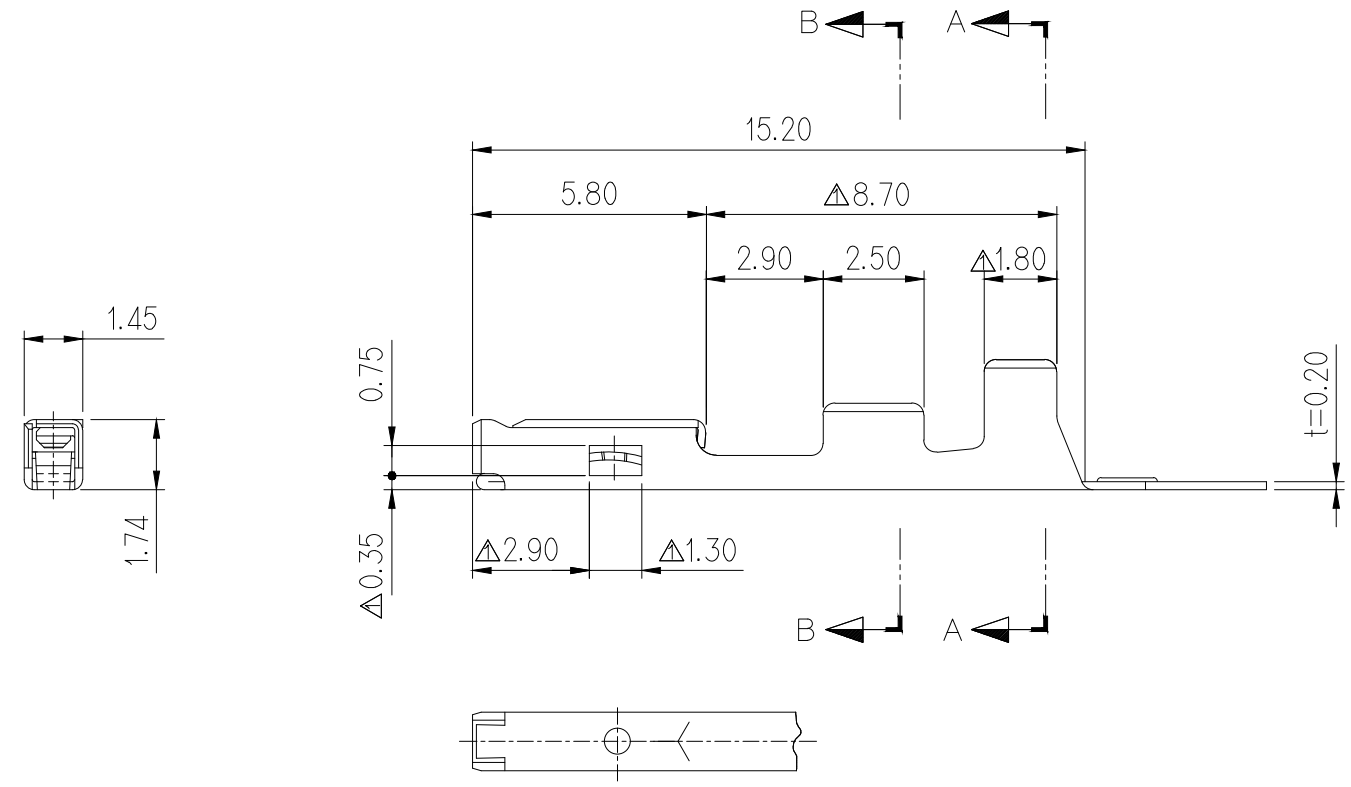
AU PLATING AREA MUST BE BACK SIDE AREA ONLY OF THE SPRING

AU PLATING AREA MUST BE INSIDE AREA ONLY OF THE BOX



GENERAL TOLERANCE (TERMINAL)						USED ON
10 MAX	20 MAX	45 MAX	45 VR	ANGLE	ECCENT	
±0.2	±0.25	±0.3	±0.5	±30'	0.1	

BARREL PART NO.	WIRE RANGE (mm ²)	DIMENSION			YAZAKI NO.
		△WR	WW	WH	
ST730913-3	CAVS,CAVUS 0.3 - 0.5	0.70	1.95	(2.15)	7116-1670-02
ST730913-G	AVSS 0.3-0.5				7116-1670-08
△ST730914-3	CAVUS 0.85	0.70	2.10	(2.50)	7116-1800-02
△ST731005-3	AVSS 0.22 △CHFUS 0.13~0.22	0.50	△1.55	△(1.60)	-
△△ST731463-3	CIVUS 0.35, 0.5	0.50	△1.90	△(2.00)	-



주 기

1. 지시없는 ROUND는 0.3이내로 할 것.
2. 기능상 유해한 BURR 및 변형이 없을 것.
3. 적용 CONN'T는 A .030 SERIES임.
- △4. 제품내 함유된 6대 유해물질 (납,수은,카드뮴,6가크롬, PBBs,PBDEs)은 EU ELV 지침 및 RoHS 법규에서 지정한 최대 허용 농도를 초과해서는 안된다.

NOTE

1. UNLESS OTHERWISE SPECIFIED ALL RADII TO BE 0.3 RADIUS.
2. MUST BE FREE OF FLASH, SINK AND IMPERFECTION THAT AFFECT FUNCTION.
3. APPLICABLE CONN'T : A .030 SERIES
- △4. 6 HAZARDOUS SUBSTANCES IN PARTS (LEAD,MERCURY, CADMIUM,HEXAVALENT CHROMIUM,PBBs,PBDEs) SHALL NOT EXCEED THE MAXIMUM PERMISSIBLE CONCENTRATION PRESCRIBED UNDER EU ELV DIRECTIVE & RoHS REGULATION.

APPROVED
2019-11-06
KOREA ELECTRIC
TERMINAL CO., LTD.
Korea Electric Te
rminal Co., LTD.

ISSUE MARK

ECO-1801-487 근거 도면 작성 CIVUS 권선 전용 품번 수정	SSW	LSY	SUK	18.01.29	MATERIAL	Copper Alloy	KET KOREA ELECTRIC TERMINAL CO., LTD.
ECO-1710-119 근거 도면 작성 CIVUS WIRE 바렐 압착불량 개선	HJE	WSW	CMS	17.09.21			
ECO-1708-164 CIVUS 0.35, 0.50sq 전선사양 Modify 개발 (사양추가)	SSW	CMS	LJE	17.08.14	FINISH	SEE TABLE	ENGINEERED
설계사양변경(080055)근거 재작성 (사양추가)	YSW			08.05.27	WIRE RANGE		CLASS
설계사양변경(060065)근거 재작성 (사양추가)	YSW			06.02.24	INSULATION		TYPE
SPRING부 변경 및 1/BARREL 폭 변경 PART NO. 추가	HEO			03.02.18	TOLERANCE EXCEPT AS NOTED	SEE TABLE	SCALE
LTR	REVISION RECORD	DR.	CHK.	APP.	DATE	5/1	PART NO.
DR. HEO S.H.	02.05.16	CHK.					
CHK.		APP.					
						PART NAME	
						A .030 FEMALE TM'L	