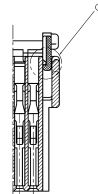
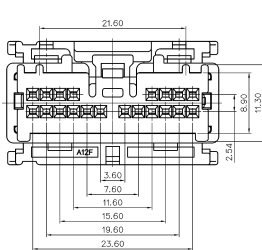
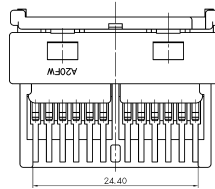
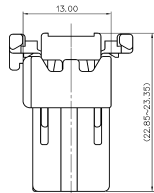
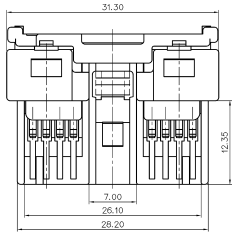
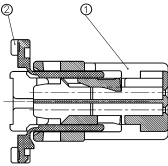
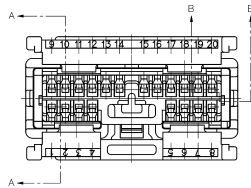


GENERAL TOLERANCE (HOUSING)					USED ON
10MAX	20MAX	45MAX	ANGLE	ECCENT	
±0.20	±0.25	±0.30	±30'	0.10	



SECTION C-C

NOTE

1. 지시하지 않은 R은 전부 0.5로 할것.
2. 기능상 유해한 BURR 및 미성형이 없을것.
3. 적용 HOUSING : MG671407(7182-8600)
4. 적용 REAR HOLDER : MG671411(7157-6779)
5. 적용 TERMINAL(YAZAKI P/NO.): 7116-1670-02, 7116-1670-08, 7116-1800-02
6. 상대물과 결합시 LOCK부의 피손이 없으것. (온도조건 : 0℃)

ISSUE MARK

		MATERIAL SEE NOTE		KOREA ELECTRIC TERMINAL CO., LTD.
		FINISH SEE NOTE		
		WIRE RANGE		CLASS
		INSULATION		TYPE 7283-8600
LTR	REVISION RECORD	DR	CHK	DATE
		TOLERANCE DEVIAT. IN NOTES		SCALE 2/1
DR. BIN 991201		CHK.		PART NO. MG651412
CHK.		APP.		PART NAME A 20P PLUG ASS'Y (A20FW)