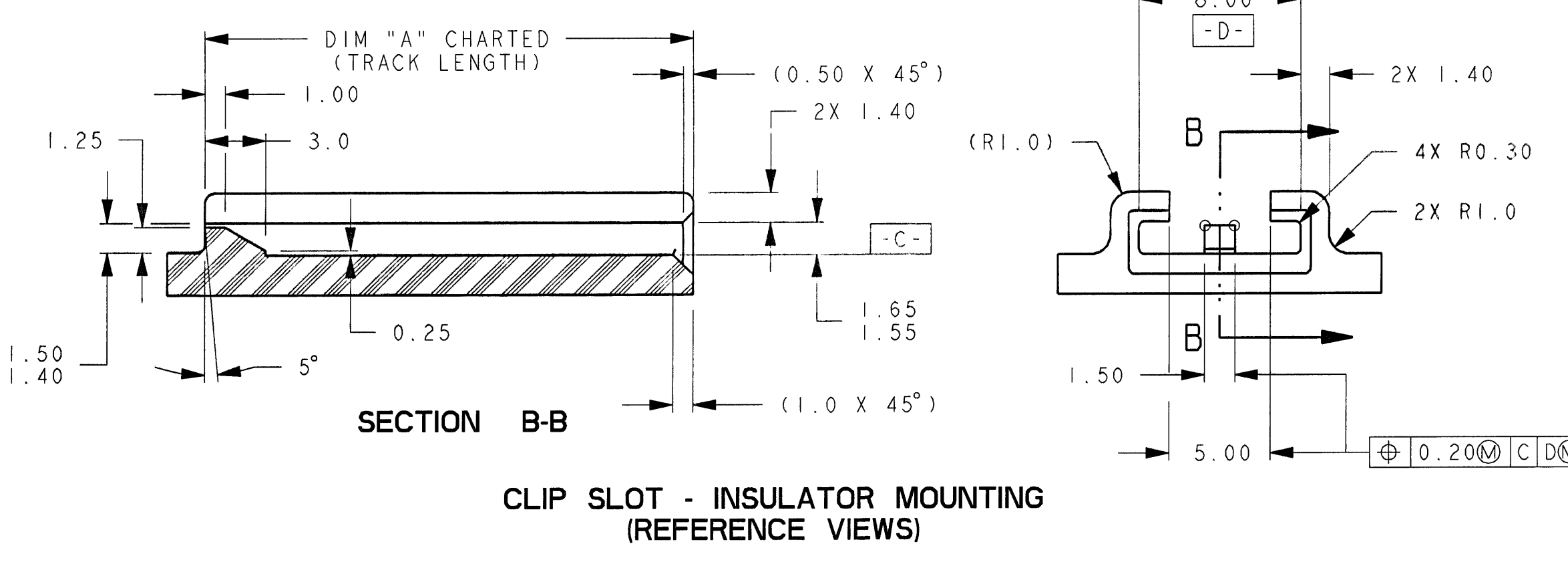


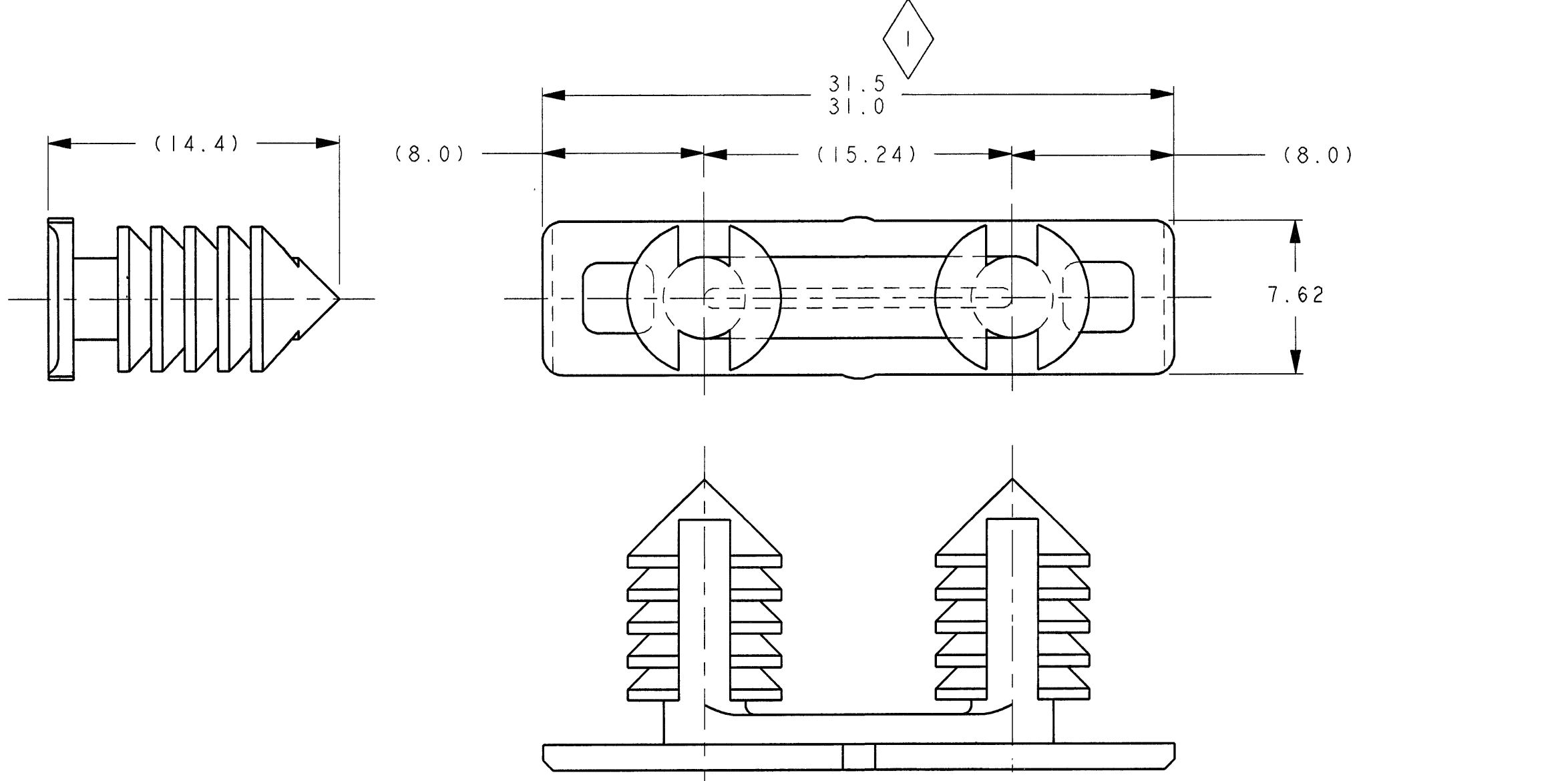
P/N 54200010 SHOWN TYPE "B" WITH FORWARD STOP

LOCATION OPTIONAL SUPPLIER LOGO, CODE, MATERIAL RECYCLE SYMBOL, MOLD & CAVITY I.D. (1.8 HIGH & 0.10 MIN RASIED) MUST BE LEGIBLE

(FORWARD PUSH THROUGH STOP)

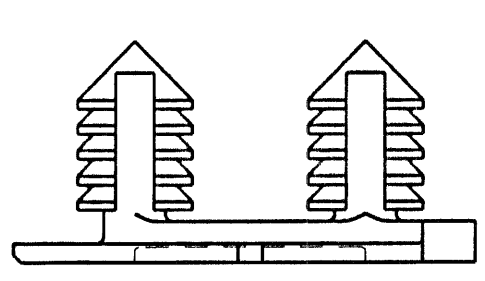
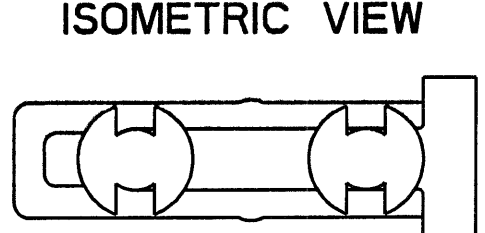
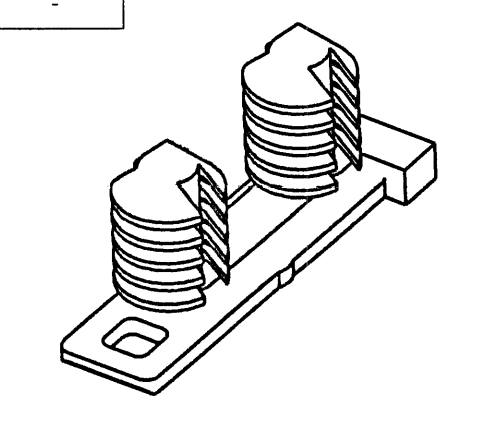


CLIP SLOT - INSULATOR MOUNTING (REFERENCE VIEWS)

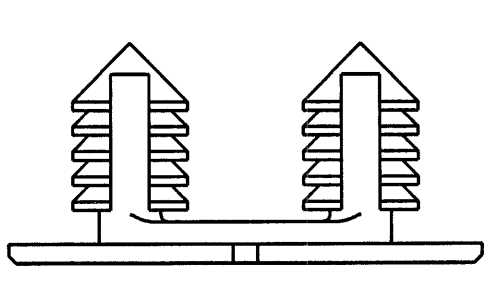
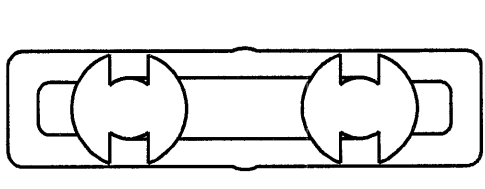


P/N G62000-A SHOWN TYPE "A" UNIVERSAL DESIGN DIMENSIONS SAME AS TYPE "B" EXCEPT AS SHOWN

(NOTE: NOT TOOLED AT FCI)



FULL SIZE VIEWS TYPE "B"



FULL SIZE VIEWS TYPE "A"

- NOTES:
- QUALITY ASSURANCE REQUIREMENTS PER DCA PS-7300: 1 SPC DATA REQUIRED
 - RECOMMENDED MTG HOLE DIA 6.60 +0.28/-0.13 PANEL THICKNESS 0.76MIN.
 - (K) INDICATES IN-PROCESS INSPECTION FOR MANUFACTURING DIMENSION(S) OR SPECIFICATION(S) :
 - WIRING FABRICATORS MUST PURCHASE FROM SOURCES SHOWN
 - MUST CONFORM TO THE FOLLOWING DCA STANDARDS:
 - PS-7300
 - PS-6013
 - PS-9065
 - MATERIAL: NYLON 6/6 IMPACT MODIFIED & STABILIZED BASF ULTRAMID A3Z HP PER DCA MSDB41 CPN # 4741 COLOR: BLACK
 - VENDOR MUST SUBMIT FOR ENGINEERING APPROVAL LOCATION & TYPES OF PULLER RINGS, GATING, PARTING LINES & EJECTION PRIOR TO CONSTRUCTION OF TOOLING
 - CLIP MUST WITHSTAND A MINIMUM FORCE OF 130 NEWTONS TO PUSH THROUGH OR PULL BACK FROM CONNECTOR
 - ANNUAL QUALITY REQUIREMENTS: IT IS PERMISSIBLE TO PERFORM CONTINUOUS CONFORMANCE PER FCI SPECIFICATIONS #AQA-001 INSTEAD OF ANNUAL LAYOUT & ANNUAL PV REQUIREMENTS OF QS-9000 SECTION 2 & PF-9600
 - CURRENT PRODUCTION TOOLING
 - POINT OF LAST RUN

27.0/23.8	A	G62000-A	(04707091)			
24.5/23.8	B	54200010				
DIM "A" TRACK LENGTH	TYPE	PART NUMBER	REV DATE	REV	DRAWING NUMBER	
		FCI			CUSTOMER	

9511	05-10-07	B3	ALL	REDRAWN AS G62000-CUST ON NEW TITLE BLOCK REPLACED G6001 REV B1, MATERIAL A3Z HP CPN4741 WAS A3Z	DRK	SSS	SSS		
ECH-NUMBER	DATE	W-D-TT	REVISION	ZONE	CHANGE DESCRIPTION	DRAWN BY	CHK. BY	APPR. BY	
PRODUCT SPEC.	PACKAGING SPEC.	APPLICATION SPEC.	THIS DRAWING AND ALL OTHER INFORMATION CONTAINED THEREIN IS PROPRIETARY AND THE PROPERTY OF FCI. THIS DRAWING MAY NOT BE COPIED, REPRODUCED OR DISCLOSED TO ANY THIRD PARTY WITHOUT THE EXPRESSED WRITTEN PERMISSION OF FCI. © FCI April 1998					END SYSTEM	
TOLERANCES: 1 PLACE DIM ±0.25 2 PLACE DIM ±0.10 ANGULAR DIM ±2°	MATERIAL:	SEE NOTES	SURFACE FINISH:	3RD ANGLE	PER / ENG.	REV. DATE	DIMENSION IN MILLIMETERS	A1	
DO NOT SCALE DRAWINGS	TOOL NO.	M-256 CUST	ECO Lth. Cth	NA	DRAWING NUMBER	G62000-CUST		SHEET	
DATE	NAME	TYPE	DRAWN BY: 05-09-01 RAJ KUMAR					CLIP-INSULATOR MOUNTING	
CHECKED BY	05-09-01 SUCHA SIAM	(2.80MM IN-LINE CONN. SYS.)	APPROVED BY: 05-09-01 SUCHA SIAM					FILE NAME	G62000-CUST
SCALE	4:1								