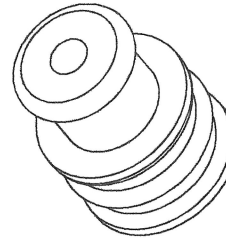
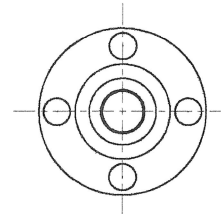


SECTION A-A



- ① MATERIAL: WSB-M2D280-A7
SILICONE RUBBER
DUROMETER = 40
- ② MATERIAL: FLOUROSILICONE
DUROMETER = 40, POST LUBRICATED
TOLERANCE: ±0.15 ALL TWO PLACE DIMENSIONS
- ③ MATERIAL: ASTM D-2000 M3HK 607 A1-10, B37, EF31, Z1, Z2, Z3
Z1 = 55-65 DUROMETER, SHORE-A HARDNESS, ASTM D2240
Z2 = CM-15 FLUID RESISTANCE, ASTM D471, 1000H @ 60 DEG. C.
- HARDNESS CHANGE: -15 POINTS MAX.
- VOLUME CHANGE: +20% MAX.
Z3 = 69% FLUORINE CONTAINING TERPOLYMER OF VINYLIDENE
FLUORIDE, HEXAFLUOROPROPYLENE, AND TETRAFLUOROETHYLENE
- ④ MATERIAL: ESB-M2D280-A2
SILICONE RUBBER
DUROMETER = 50

REMARKS
THE MASTER SOURCE OF INFORMATION FOR THIS DRAWING IS IN A COMPUTER DATABASE. CHANGES ARE NOT PERMITTED WITHOUT PRIOR CONSENT OF THE ENGINEERING CAD AREA.

CHANGES IN DESIGN: COMPOSITION OR PROCESSING OF THE PART PREVIOUSLY APPROVED FOR PRODUCTION REQUIRE A NEW ENGINEERING APPROVAL FROM FORD MOTOR COMPANY LTD/FORD WERKE A.G. PRIOR TO PRODUCTION.

ENGINEERING APPROVAL OF PRODUCTION SAMPLES FROM EACH SUPPLIER REQUIRED PRIOR TO AUTHORIZATION OF INITIAL PRODUCTION. FOR SAMPLE REQUIREMENTS SEE ENGINEERING RELEASE.

DIMENSIONS AND INSTRUCTIONS WHICH ARE NOT DEFINED ARE LEFT TO THE SUPPLIERS DISCRETION.

NOTES: UNLESS OTHERWISE SPECIFIED

GENERAL TOLERANCES
±0.3 ALL ONE PLACE DIMENSIONS
±0.10 ALL TWO PLACE DIMENSIONS
±1°00' ALL ANGULAR DIMENSIONS

FLASH EXTENSION OF 0.25 THICK BY 1.00 WIDE IS THE MAXIMUM PERMISSIBLE AND MUST NOT AFFECT THE FIT OR FUNCTION OF THE PART.

	① ④			③ ④			②			① ④		
	XW43-14603-AA (GREEN) CABLE SEAL 6R3T-10C930-BA (LT.GREEN) CABLE SEAL FOR CABLE O.D. 1.60/2.10			97BG-10C930-SBA (PINK) CABLE SEAL E-1644-03 (BLUE) CABLE SEAL 6R3T-10C930-AA (PURPLE) CABLE SEAL FOR CABLE O.D. 1.19/1.65			XW4T-14603-FA (YELLOW) CABLE SEAL E-1644-04 (TAN) CABLE SEAL 6R3T-10C930-CA (ORANGE) CABLE SEAL FOR CABLE O.D. 2.10/2.50			6R3T-10C930-CA 4 E-1644-07 1.65 2.45 ORANGE 6R3T-10C930-AA 4 E-1644-06 0.90 1.64 PURPLE 6R3T-10C930-BA 4 E-1644-05 1.25 2.10 LT.GREEN TBD 3 E-1644-04 1.65 2.45 TAN TBD 2 E-1644-03 0.90 1.65 BLUE XW4T-14603-FA 1 E-1644-02 1.65 2.45 YELLOW 97BG-10C930-SBA 1 E-1644-01 0.90 1.64 PINK XW43-14603-AA 1 E-1644-00 1.25 2.10 GREEN		
INSULATION THICKNESS	20 GA. (0.50mm ²)	18 GA. (0.80mm ²)	16 GA. (1.00mm ²)	22 GA. (0.35mm ²)	20 GA. (0.50mm ²)	18 GA. (0.80mm ²)	14 GA. (2.00mm ²)	14 GA. (2.00mm ²)	14 GA. (2.00mm ²)	14 GA. (2.00mm ²)	14 GA. (2.00mm ²)	14 GA. (2.00mm ²)
0.41	1.70/1.85	1.91/2.06		1.50/1.65								
0.31		1.70/1.90	1.90/2.10	1.20/1.40	1.40/1.60				2.40/2.20			
0.25		1.60/1.75	1.88/2.03	1.19/1.35	1.40/1.55			2.34/2.49				
0.20			1.68/1.83 1.70/1.90		1.20/1.40 1.20/1.35	1.50/1.70 1.40/1.55						
	FORD PART NUMBER	MAT'L	SUPPLIER PART NUMBER	"A"	"B"	COLOR						

LTRS.		REVISIONS			
DATE	ORIGINATOR	CHECKER	ENGR. APP.	MATL/FSTNR	
RELEASED XW43-14603-AA NB00-1-10598492-101					
960606	D. OSTERHOUSE	J. KING			
RELEASED XW4T-14603-FA NB00-1-10598492-729					
970217	D. OSTERHOUSE	D. OSTERHOUSE			
A1 UPDATED CHART INFORMATION A2 RELEASED 6R3T-10C930-BA, 6R3T-10C930-AA, 6R3T-10C930-CA A3 ADDED MATERIAL FOR NEW PART NUMBERS A4 REVISED WIRE APPLICATION FOR E-1644-03 CABLE SEAL A5 2.45 WAS 2.40 (2) PLACES AE00-1-11672088-000					
	S. FINSTROM	B. HAYWARD			
B1 1.64 WAS 1.65 ARCHIVED DATE: AELE-E-11783935-021					
	D. OSTERHOUSE	B. HAYWARD	J. BAUGHMAN		CAD:Y

REFERENCE	
AFL Automotive Division	AFL DRAWING NO. E-1644 / W-1614
PART MUST COMPLY WITH MATERIAL SPECIFICATION WSS-M99P9999-A1 TO HELP SAFEGUARD HEALTH, SAFETY AND THE ENVIRONMENT.	
SUBJECT TO CERTIFICATION/HOMOLOGATION YES <input type="checkbox"/> NO <input checked="" type="checkbox"/>	
CAD FILE	
CAD TYPE	PRO-E
D.C. NODE	
SCALE	10:1
DEPT. NO.	
PRODUCT ENGINEERING	
3 rd ANGLE PROJECTION DIMENSIONS IN MILLIMETERS	
DIMENSIONING & TOLERANCING IN ACCORDANCE WITH ANSI Y14.5M - 1982	
MATERIAL/APPLICATION SEE TABLE	
NAME	CABLE SEAL
NO.	XW43-14603-AA

DWG. SIZE A2