

NUMBER C-175095

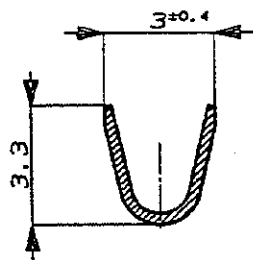
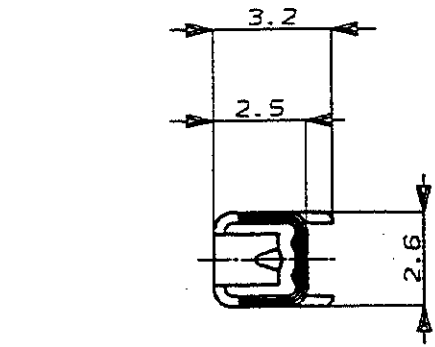


METRIC

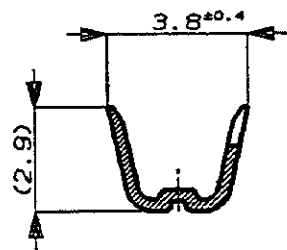
単位: 尺 DIMENSIONS IN MM. DO NOT SCALE PRINT

PRINT DIST

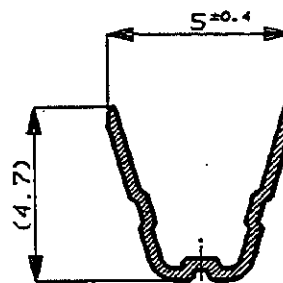
AMP-J
REV. 10/89



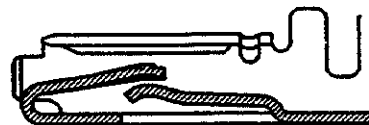
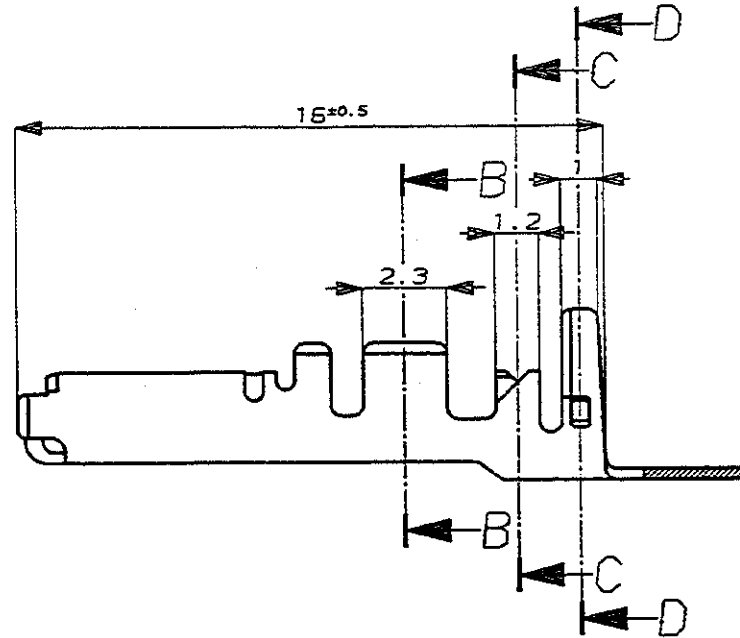
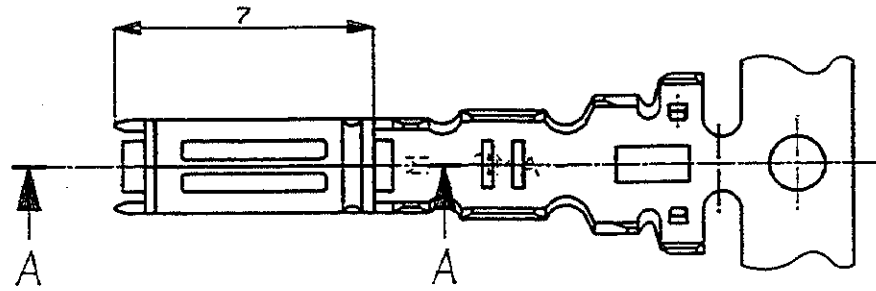
断面 B-B
SECT. B-B



断面 C-C
SECT. C-C



断面 D-D
SECT. D-D



断面 A-A
SECT. A-A

注:

1. 圧着規格 114-5134

NOTES;

1. CRIMP SPEC. 114-5134

Copyright ©1992年 AMP (Japan) LTD. ALL RIGHTS RESERVED.		Copyright ©1992 AMP (Japan) LTD. ALL RIGHTS RESERVED.		PRE-TINNED 錫めつき済 FINISH 仕上げ		175095-1 AMP PART NO. 製品型番	
AMP 日本エー・エム・ピー株式会社 Tokyo, Japan				.070 SERIES RECEPTACLE .070 シリーズ リセプタクルコンタクト			
組合電線断面径 (WIRE RANGE) 0.55-1.29mm* (AWG#20-16)		被覆外径 (INSULATION DIA.) 1.2-1.9 mmφ		一般公差 (GENERAL TOLERANCED)		LOC 番号 (No.)	
材料 (MATERIAL) THICKNESS BRASS, 板厚: 0.25		仕上 (FINISH) SEE TABLE 表参照		10μ以下: ±0.2 10μ以上 30μ以下: ±0.25 30μ以上 100μ以下: ±0.3 角 度: ±3°		B J. C-175095	
DR. Y. Minakata		DE. Y. Minakata		尺度 (SCALE) 5-1		REV. 0 SHEET 1 OF 1	
LTR 変更 (REVISION RECORD)		DR CHK DATE		CHK. S. Ichihashi		APP. S. Osahata	

(CUSTOMER DRAWING) 参考 面