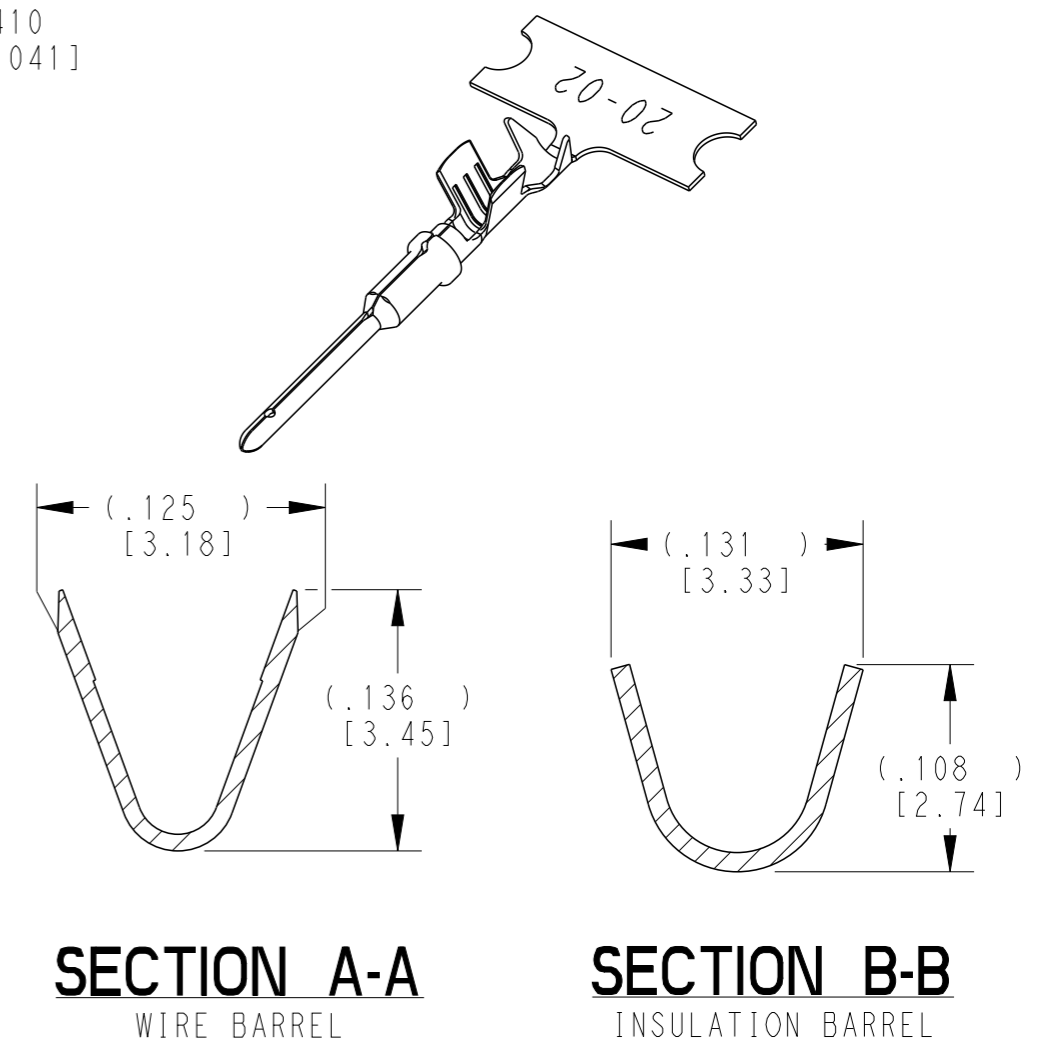
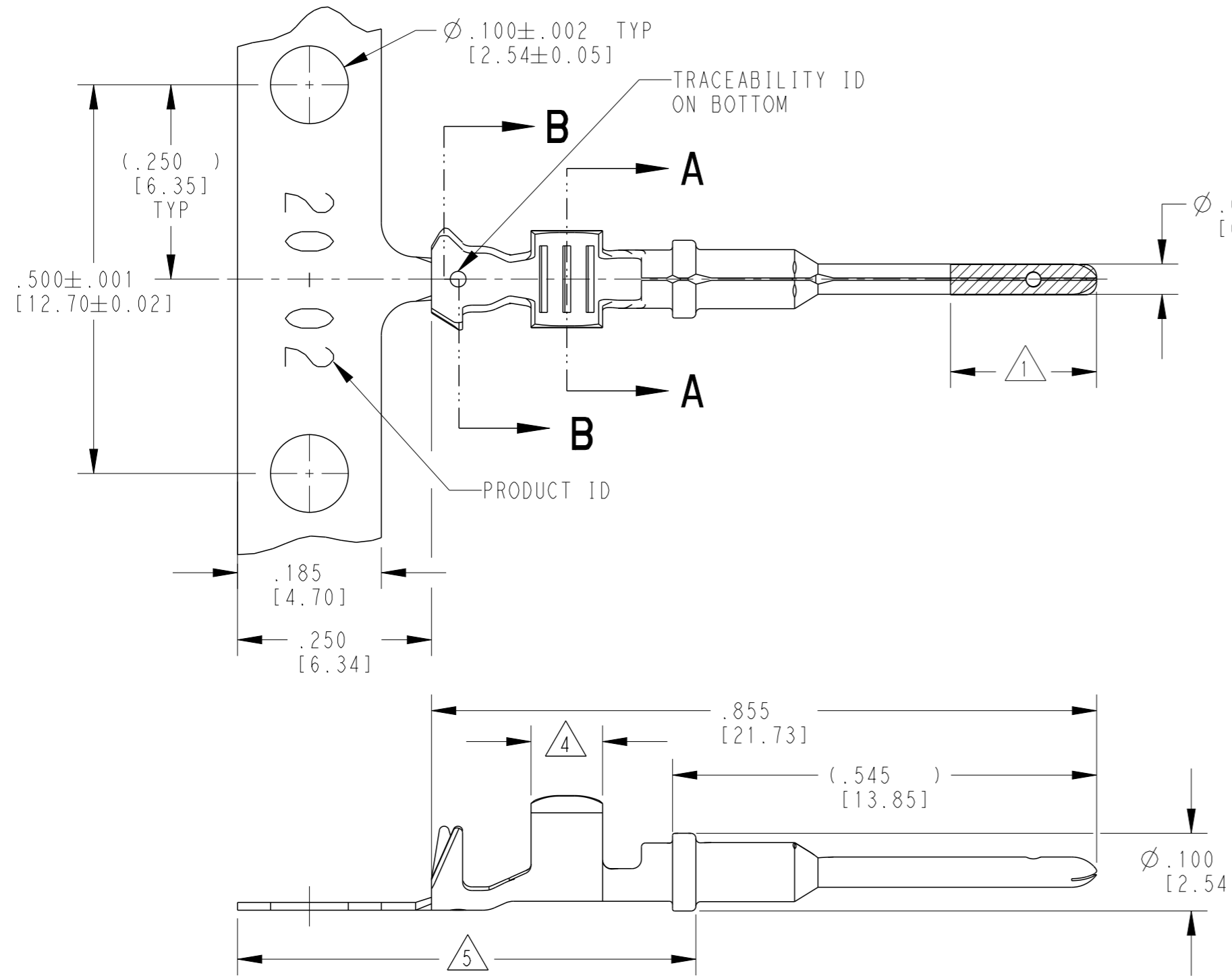


THIS DRAWING IS UNPUBLISHED. RELEASED FOR PUBLICATION 2018
 © COPYRIGHT 2018 BY - ALL RIGHTS RESERVED.

REVISIONS					
P	LTR	DESCRIPTION	DATE	DWN	APVD
	E	REVISED PER PCN E-18-007949	23MAY2018	DD	DM
	F	REVISED PER PCN-24-210586	10JUN2024	PS	CB
	F1	REVISED PER PCN-24-223984	14OCT2024	RK	CB
	F2	REVISED PER PCN-25-234384	31JAN2025	RK	CB



- 5 TIN PLATING MAY BE IN THIS REGION.
- 4 TIN PLATED REGION.
- 3 MATERIAL: .010 [0.25] THICK COPPER ALLOY.
- 2 WIRE RANGE: 22 AWG TO 16 AWG [0.35-1.50 mm²].
INSULATION RANGE: $\phi .050 - .085$ [$\phi 1.27 - 2.16$].
- 1 GOLD PLATED REGION.

NOTES: UNLESS OTHERWISE SPECIFIED

TE INTERNAL PN	DEUTSCH PN	REV	PLATING
1060-20-0222	1060-20-0222	K	Ni/Cu Overall
1060-20-0244	1060-20-0244	K	Selective Au, Ni/Cu Overall, Sn/Ni/Cu Wire Barrel
1060-20-0277	1060-20-0277	K	Sn/Ni/Cu Overall

THIS DRAWING IS A CONTROLLED DOCUMENT.		DWN J. APOSTOL 01DEC2009	STE TE Connectivity	
DIMENSIONS: INCHES [mm]		CHK D. MEYER 02DEC2009		
TOLERANCES UNLESS OTHERWISE SPECIFIED:		APVD R. REED 03DEC2009	NAME PIN, STAMPED CONTACT	
0 PLC ±		PRODUCT SPEC 108-151000	SIZE 20	
1 PLC ±		APPLICATION SPEC 114-151003	16-22 AWG, .050-.085 INS	
2 PLC ±		WEIGHT 0.15 g	SIZE A3	CAGE CODE 4AFU8
3 PLC ±		CUSTOMER DRAWING	DRAWING NO. 1060-20-02XX	RESTRICTED TO -
4 PLC ±			SCALE 6:1	SHEET 1 OF 1
ANGLES ±				REV F2
FINISH -				
SEE TABLE				