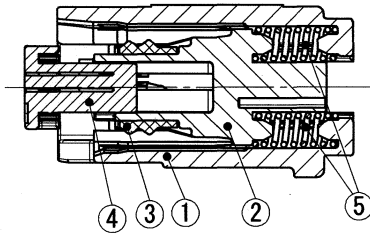
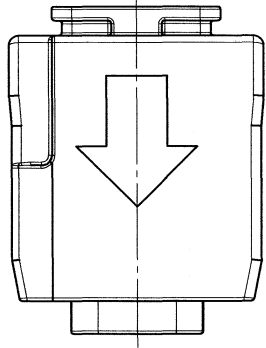
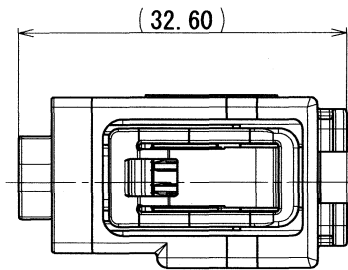
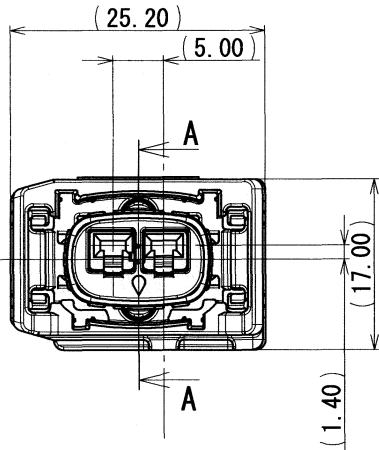


GENERAL TOLERANCE											
	10 MAX	50 MAX	100 MAX	250 MAX	250 OVR	R5 MAX	R10 MAX	R20 MAX	R20 OVR	ANGLE	ECCENT
A	±0.15	±0.2	±0.3	±0.5	±0.75					±3°	0.1
B	±0.2	±0.3	±0.55	±0.95	±1.4	±0.2	±0.3	±0.5	±2.5	±3°	0.1
C	±0.3	±0.5	±0.8	±1.4	±2					±3°	0.15



SEC. A-A



SUB ASSEMBLY PART NO. AND CH. CODE		NO.	PART NO. AND CH. CODE	PART NAME	MATERIAL	COLOR	QTY.
7287-1495-40	①	7187-1495-40	OUTER HOUSING	PBT-G	GRAY	1	
	②	7187-1496	INNER HOUSING	PBT-G	NATURAL	1	
	③	7137-2294-80	PACKING	SILICONE RUBBER	BROWN	1	
	④	7172-0180	FRONT HOLDER	PBT-G	NATURAL	1	
	⑤	7144-1718	SPRING	STAINLESS STEEL		2	
7287-1495-30	①	7187-1495-30	OUTER HOUSING	PBT-G	BLACK	1	
	②	7187-1496	INNER HOUSING	PBT-G	NATURAL	1	
	③	7137-2294-80	PACKING	SILICONE RUBBER	BROWN	1	
	④	7172-0180	FRONT HOLDER	PBT-G	NATURAL	1	
	⑤	7144-1718	SPRING	STAINLESS STEEL		2	

NOTES

- APPLICABLE TERMINAL NO. : 7116-5044-02 ETC.
- APPLICABLE SEAL RUBBER NO. : 7158-3003-90 ETC.
- APPLICABLE UNUSED CAVITY PLUG: 7157-3382-80

注記

- 適用端子品番 : 7116-5044-02 ETC.
- 適用ゴム栓品番 : 7158-3003-90 ETC.
- 適用防水栓品番 : 7157-3382-80

ISSUE MARK

				CUSTOMER		MATERIAL SPEC.		TREAT. & FIN.			
				CUSTOMER PART NO.		SEE TABLE					
				CUSTOMER DWG NO.		NAME					
2007/04/17				NEW		C07-Z321		M. N		2.3 II 2P HIGH VIBRATION RESISTANCE	
LET				DATE		REVISION RECORD		NO.		CHKD	
										SEALED CONNECTOR FEMALE SUB ASSEMBLY	
										PART NO.	
										7287-1495-40 ETC.	
										CH. CODE	
										7287-1495-40:R	
										SET DWG NO.	
										YAZAKI CORPORATION	