

GENERAL TOLERANCE											
	10 MAX	50 MAX	100 MAX	250 MAX	250 OVR	R5 MAX	R10 MAX	R20 MAX	R20 OVR	ANGLE	ECCENT
A	±0.15	±0.2	±0.3	±0.5	±0.75					±3°	0.1
B	±0.2	±0.3	±0.55	±0.95	±1.4	±0.2	±0.3	±0.5	±2.5	±3°	0.1
◎	±0.3	±0.5	±0.8	±1.4	±2					±3°	0.15

TABLE 1	SUB ASSEMBLY PART NO. AND CH. CODE	NO.	PART NO. AND CH. CODE	PART NAME	MATERIAL	COLOR	QTY.
	7287-1380-30 ETC. SEE TABLE 2	①	7187-1380-30 ETC. SEE TABLE 2	HOUSING	PBT	SEE TABLE 2	1
		②	7172-0167	FRONT HOLDER	PBT-G	NATURAL	1
		③	7137-2849-80	PACKING	SILICONE RUBBER	BROWN	1

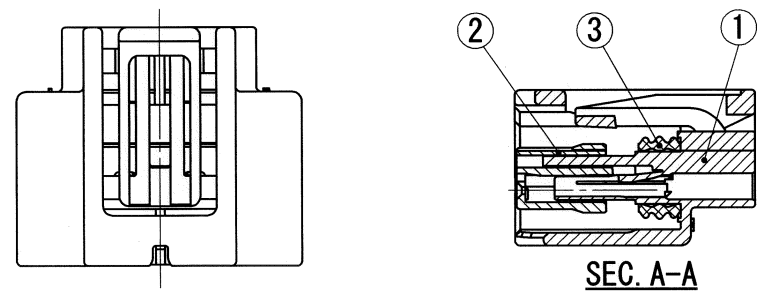


TABLE 2	SUB ASSEMBLY PART NO. AND CH. CODE	PART NO. AND CH. CODE	COLOR
	7287-1380-30	7187-1380-30	BLACK
	7287-1380	7187-1380	NATURAL
	7287-1380-10	7187-1380-10	DARK GRAY
	7287-1380-40	7187-1380-40	LIGHT GRAY

NOTES

1. APPLICABLE TERMINAL NO. : 7116-4415-02, 7116-4416-02, 7116-4417-02.
2. APPLICABLE SEAL RUBBER NO. : 7158-3165-90, 7158-3166-60, 7158-3167-80, 7158-3168-80.
3. APPLICABLE UNUSED CAVITY PLUG: 7158-3169-40.

注記

1. 適用端子品番 : 7116-4415-02, 7116-4416-02, 7116-4417-02
2. 適用ゴム栓品番 : 7158-3165-90, 7158-3166-60, 7158-3167-80
7158-3168-80
3. 適用防水栓品番 : 7158-3169-40

				CUSTOMER				MATL. SPEC.				TREAT. & FIN.			
				CUSTOMER PART NO.				CUSTOMER DWG NO.				NAME			
2007/02/13				NEW				C07-Z101				K. N			
LET				DATE				REVISION RECORD				NO.			
								VENDOR				VENDOR NO.			
								DWG TYPE				DWG SOURCE			
								R				NEW			
								DWG DATE				UNIT			
								2007/02/13				mm			
								SCL				ANGLE			
								2:1				3			
								PART NO. CH. CODE				7287-1380-30 ETC.			
								DWG NO.				7287-1380-30:R			
												SET DWG NO.			
												YAZAKI CORPORATION			