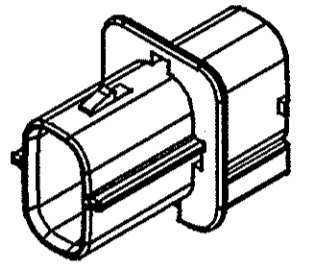
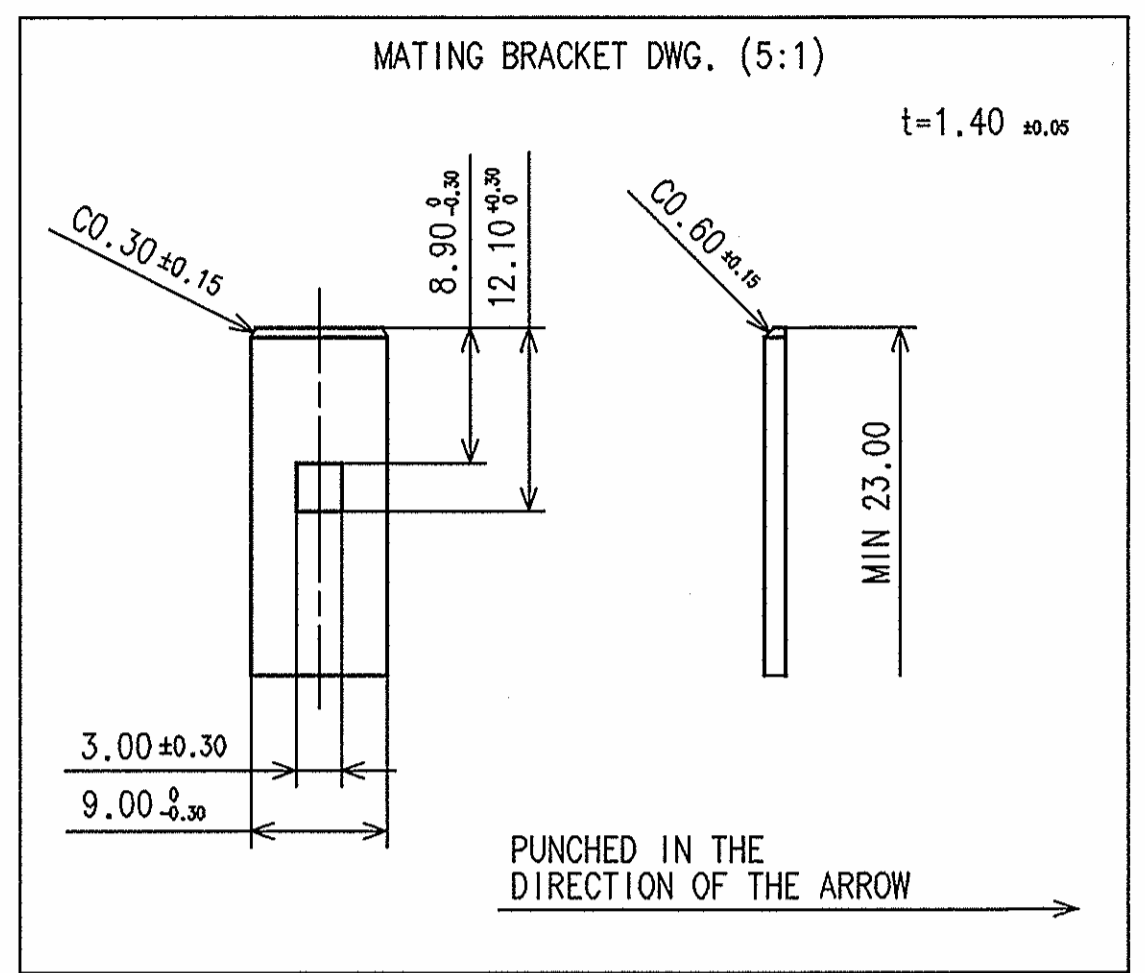
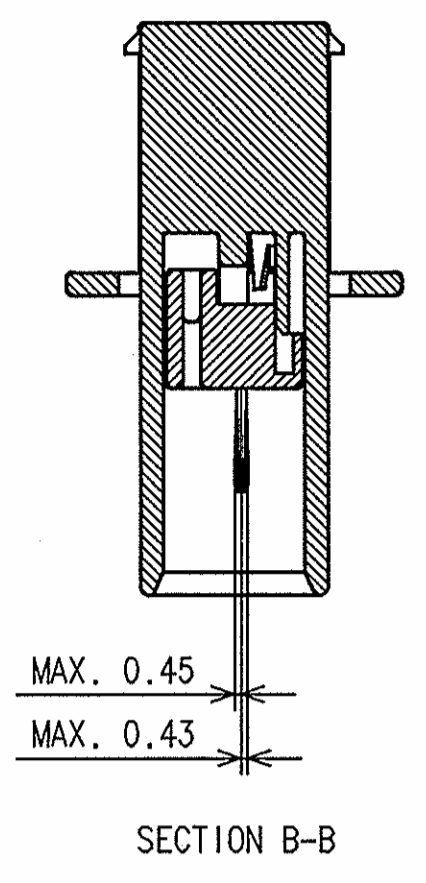
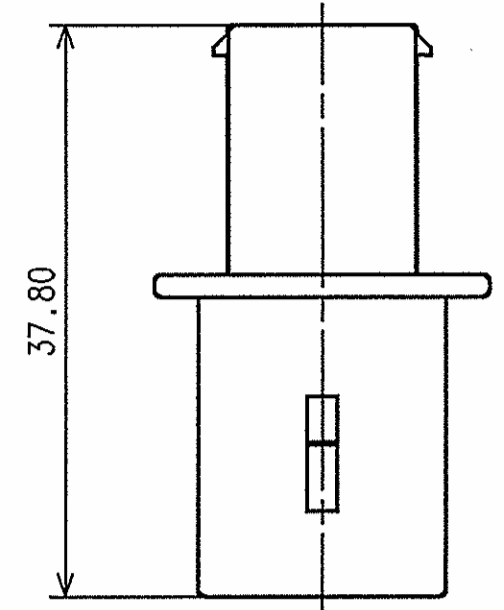
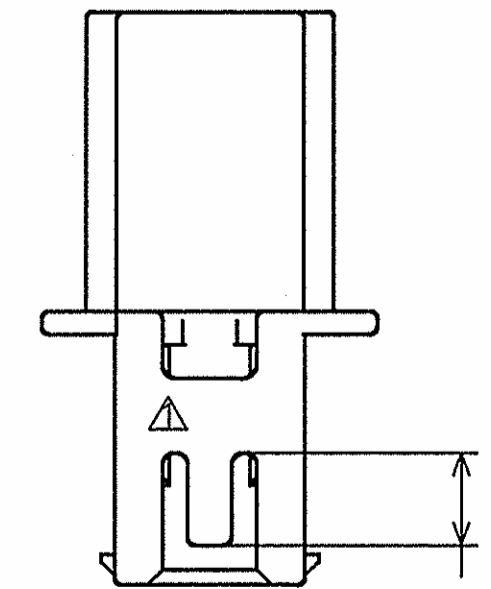
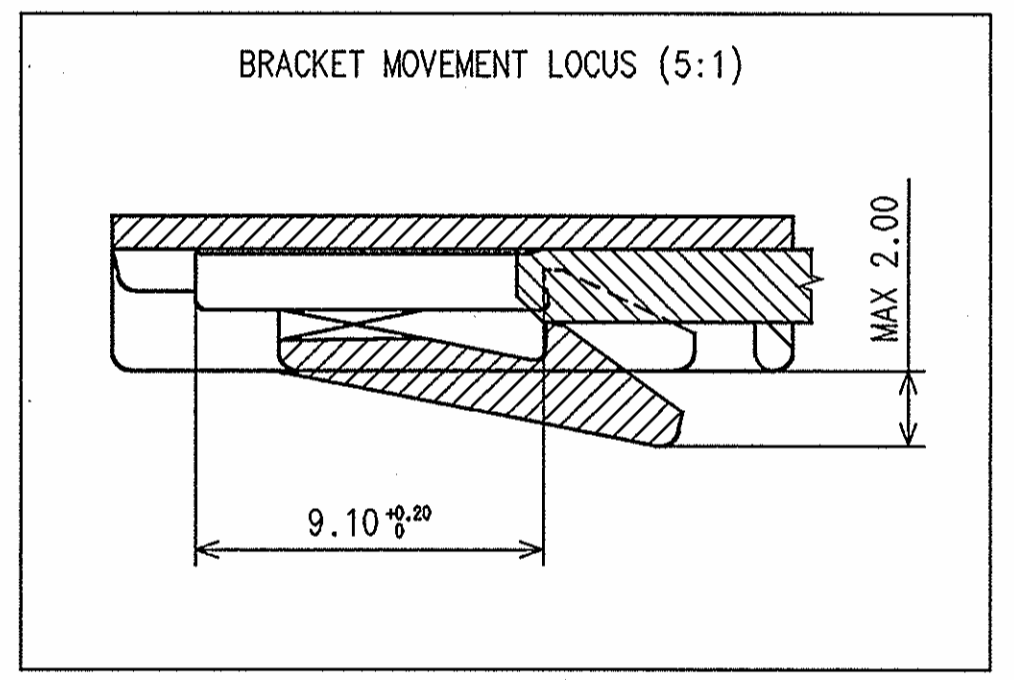
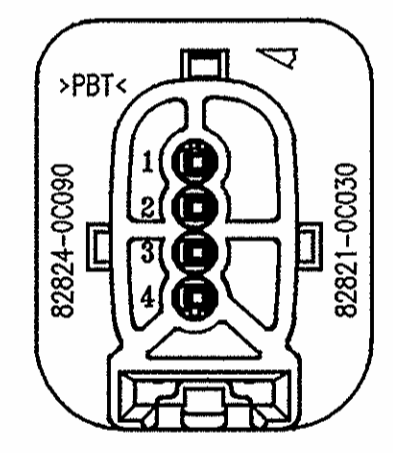
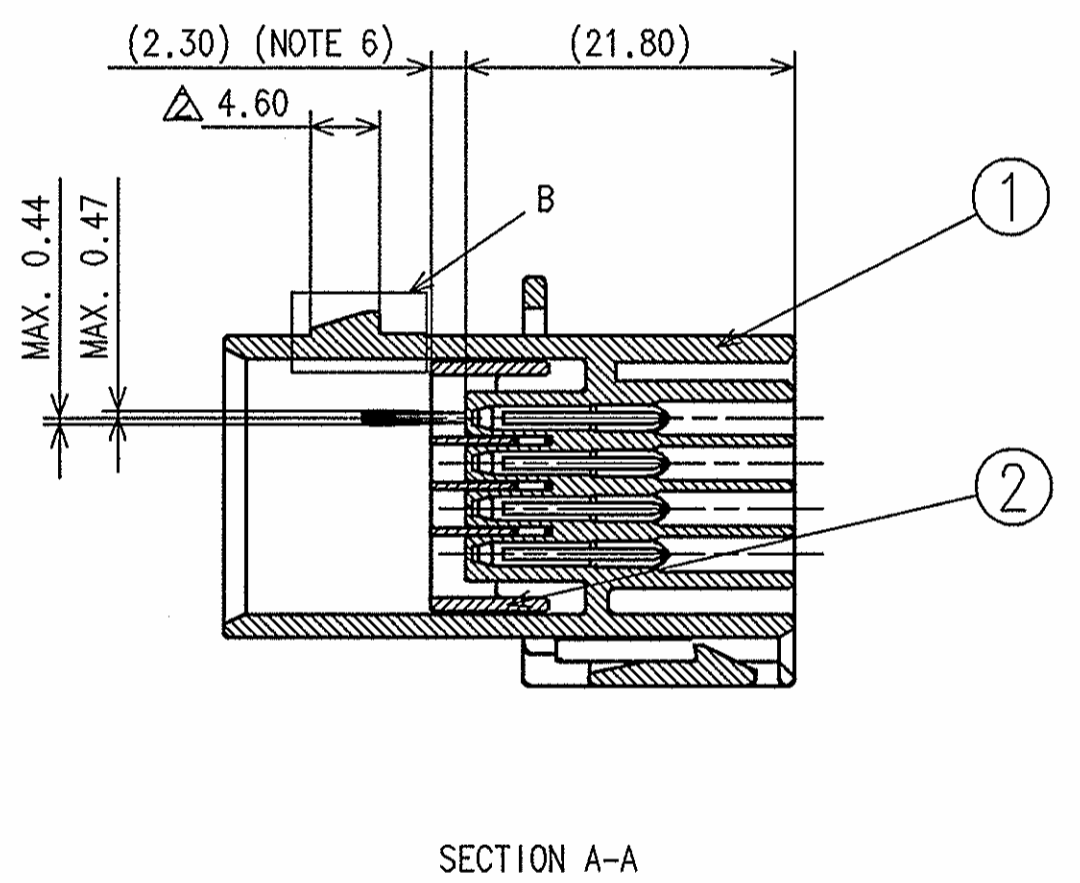
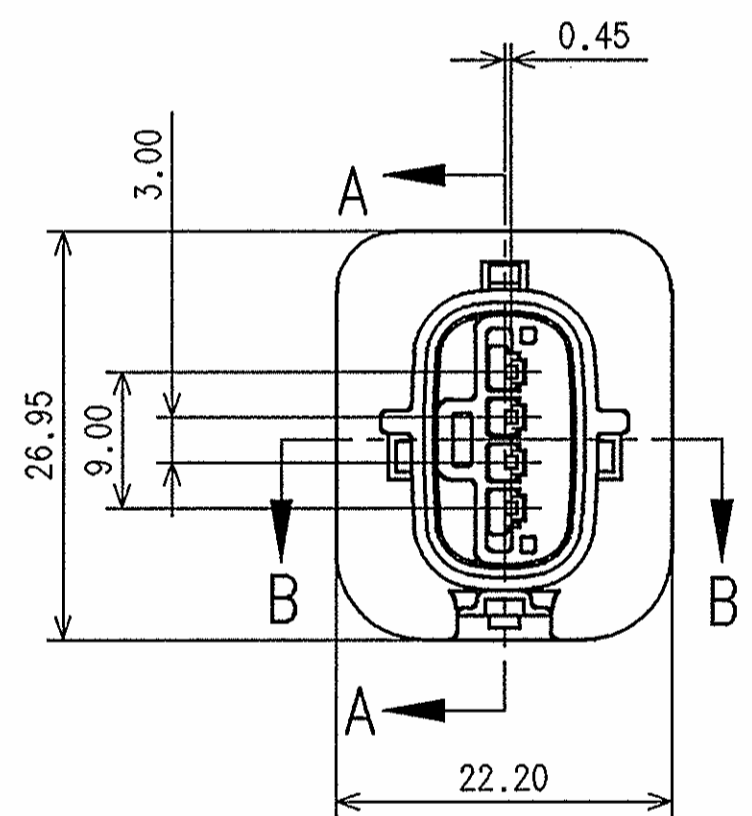


TABLE 1	TOYOTA PART NUMBER	YAZAKI SUB ASSEMBLY PART NO.	NO.	PART NUMBER	PART NAME	MATERIAL	COLOR	QUANTITY
	82824-0C090	7286-2406	①	7186-2406	0.64mm 4P SEALED MALE HOUSING	TSM5527G	NATURAL	1
			②	7172-0273-40	0.64mm 4P SEALED MALE FRONT HOLDER	TSM5527G	LIGHT GRAY	1

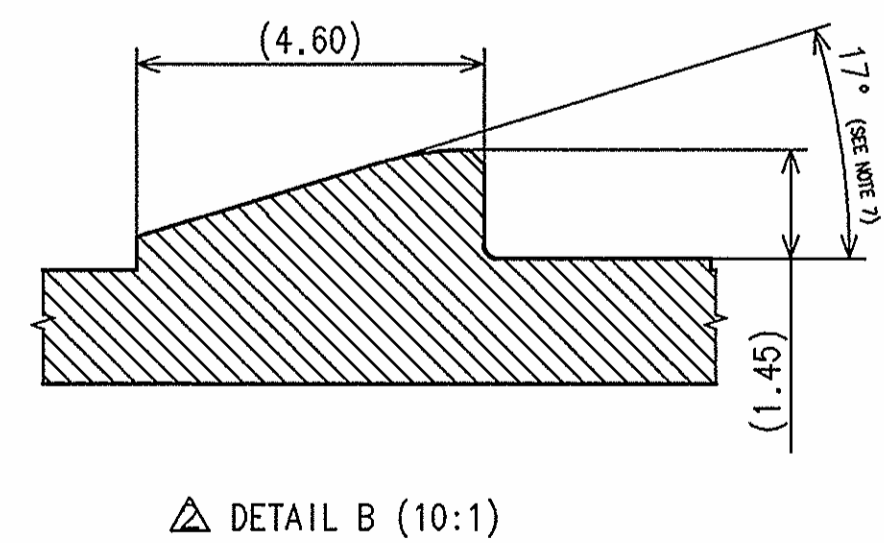
TABLE 2	PART NAME	TOYOTA PART NO.	YAZAKI PART NO.	COLOR
	0.64 SEALED TERMINAL MALE (GOLD PLATING)	90980-09903	7114-4819-08	-
	0.64 RUBBER STOPPER	90980-09901	7158-3391-60	DARK GREEN
		90980-09870	7158-3042-80	BROWN
		90980-09872	7158-3044-10	DARK GRAY
	90980-09996	7158-3188-20	PURPLE	
	0.64 SEALED CONNECTOR PLUGGING RUBBER STOPPER	90980-09871	7158-3043-40	LIGHT GRAY



ISOMETRIC VIEW (1:1)



CASSETTE LOCK ARM LENGTH SHORTENED BY 1.5mm.



- NOTES:
- PERFORMANCE OF THIS PART CONFORMS TO TSC1225G REV. 4, WHEN TESTED TO TSC1000G REV. 8 AT VIBRATION CLASS 11.
 - MATING PART NUMBER: 82824-0C100 (7287-2404) AND 82821-0C040 (7287-2407).
 - REFER TABLE 2 FOR APPLICABLE TERMINAL AND RUBBER STOPPER. REFER TO TERMINAL AND RUBBER STOPPER DRAWING FOR APPLICABLE WIRE SIZE.
 - TERMINAL USED ON THIS COMPONENT SHALL BE GOLD-PLATING AND THE MATING TERMINAL SHALL BE ALSO GOLD-PLATING.
 - THIS PART SHALL CONFORM TO SUB-PARAGRAPH 'SUBSTANCE PROHIBITION AND RESTRICTION' IN TSZ0001G.
 - MATERIAL DISPLAY OF THIS PART SHALL BE BASED ON TSZ6005G.
 - THIS DIMENSION SHOWS THE PRESET POSITION OF SPACER.
 - THIS ANGLE IS NEEDED TO SPRING BACK FEMALE CONNECTOR TO PRESET POSITION WHEN NOT FULLY MATED.

FOR INTERNATIONAL		TOYOTA EC		FOR OVERSEAS			
MODEL	SS	MASS	NO.	ISS	REVISION RECORD	DATE	REVR.
356W	7	g±MB	356WB1982		NEW ADOPTION	4.20.07	MM
456W	A	7	g±MB	456WB0087	CHANGED SHAPE	7.10.08	MM
456W	B	7	g±MB	456WB0229	CHANGED SHAPE		MM

TOYOTA PART NAME: CONNECTOR, WIRING HARNESS

TOYOTA PART NO.: 82824-0C090-B

APPROVED: [Signature]

STAFF CODE: [Blank]

TOYOTA MOTOR ENG. & MFG. N.A. INC.

ISSUE MARK

CUSTOMER: TOYOTA MOTOR ENG. & MFG. N.A. INC.

CUSTOMER PART NO.: 82824-0C090

OFFICE: YNA

VENDOR: [Blank]

CUSTOMER DWG NO.: [Blank]

TRIAL PART NO.: [Blank]

MATL. SPEC.: SEE TABLE 1

TREAT. & FIN.: N/A

NAME: 0.64mm 4P SEALED CONNECTOR MALE SUB ASSEMBLY

PART NO.: 7286-2406

DWG NO.: 7286-2406:TM

YAZAKI CORPORATION

GENERAL TOLERANCE										GENERAL TOLERANCE													
	10 MAX	50 MAX	100 MAX	250 MAX	250 OVR	R5MAX	R10MAX	R20MAX	R20OVR	ANGLE	ECCENT		10MAX	50MAX	100MAX	250MAX	250OVR	ANGLE	ECCENT				
A	±0.15	±0.2	±0.3	±0.5	±0.75					±3°	0.1	A	±0.15	±0.2	±0.3	±0.5	±0.75	±30'	0.1				
(B)	±0.2	±0.3	±0.55	±0.95	±1.4	±0.2	±0.3	±0.5	±2.5	±3°	0.1	B	±0.2	±0.3	±0.55	±0.95	±1.4	±30'	0.1				
C	±0.3	±0.5	±0.8	±1.4	±2					±3°	0.15	C	±0.3	±0.5	±0.8	±1.4	±2	±30'	0.15				
SPECIFIED											MASS	7 g	SPECIFIED										
SPECIFIED											WEIGHT	g	SPECIFIED										

LET	DATE	REVISION RECORD	NO.	CHKD
Δ	12.12.08	CHANGED SHAPE	C08-AC09	JVN
Δ	07.08.08	CHANGED SHAPE	C08-A723	JVN
-	07.12.07	NEW	C07-A850	JVN