

1

2

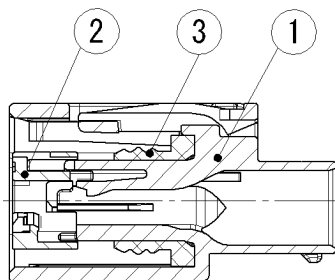
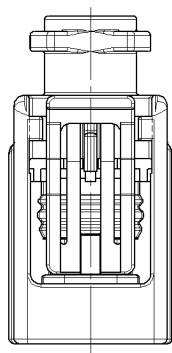
3

△ TABLE 1

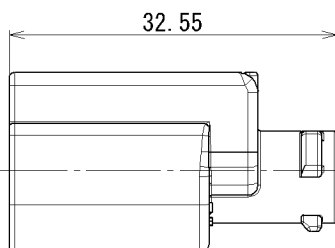
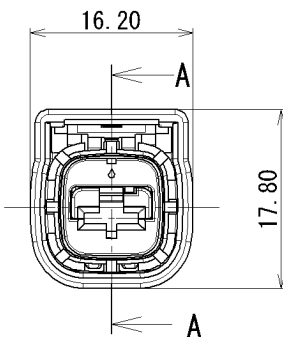
SUB ASSEMBLY PART NO. AND CH. CODE	NO.	PART NO. AND CH. CODE	△ PART NAME	MATERIAL	COLOR	QTY.
△ 7283-9285-30 ETC.	①	△ SEE TABLE 2	187 1P SEALED HOUSING FEMALE	PBT	△ SEE TABLE 2	1
	②	7158-6712	187 1P SEALED FRONT HOLDER FEMALE	PBT	NATURAL	1
	③	7137-2097-80	187 1P SEALED PACKING	SILICONE RUBBER	BROWN	1

△ TABLE 2

SUB ASSEMBLY PART NO. AND CH. CODE	PART NO. AND CH. CODE	COLOR
△ 7283-9285	7183-9285	NATURAL
7283-9285-30	7183-9285-30	BLACK



SEC. A-A



注記

- △ 1. かん合相手品番 : 7282-9285-30, 7282-9285
 2. 適用端子品番 : 7116-4035, 7116-4036, 7116-4037, 7116-4089-02
 3. 適用ゴム栓品番 : 7158-3014-90, 7158-3015-10
 7158-3016-80, 7158-3017

NOTES

- △ 1. MATING PART NO. : 7282-9285-30, 7282-9285
 2. APPLICABLE TERMINAL NO. : 7116-4035, 7116-4036, 7116-4037, 7116-4089-02
 3. APPLICABLE SEAL RUBBER NO. : 7158-3014-90, 7158-3015-10
 7158-3016-80, 7158-3017

△ GENERAL TOLERANCE

	10 MAX	50 MAX	100 MAX	250 MAX	250 OVR	R5 MAX	R10 MAX	R20 MAX	R20 OVR	ANGLE	ECCENT
A	±0.15	±0.2	±0.3	±0.5	±0.75					±3°	0.1
B	±0.2	±0.3	±0.55	±0.95	±1.4	±0.2	±0.3	±0.5	±2.5	±3°	0.1
◎	±0.3	±0.5	±0.8	±1.4	±2					±3°	0.15

ISSUE MARK

LET	DATE	REVISION RECORD	NO.	CHKD	CUSTOMER	CUSTOMER PART NO.	CUSTOMER DWG NO.	MATL. SPEC.	TREAT. & FIN.					
△	10/11/11	ADDED COLOR PART NO. ETC.	C10-Z619	M. S				SEE TABLE 1						
	04/12/09	NEW	C04-ZF70	T. T										
GENERAL TOLERANCE					VENDOR NO.					NAME △ 187 1P SEALED HOUSING				
VENDOR NO.					PART NO. CH. CODE △ 7283-9285-30 ETC.					SUB ASSEMBLY FEMALE				
SPECIFIED					APPROVED					DWG NO. 7283-9285-30:R				
MASS					N. SUGIE					YAZAKI CORPORATION				
					10/11/11					SET DWG NO.				
					10/11/11									
					10/11/11									
					04/10/28									
					10/11/11									

1

2

3