

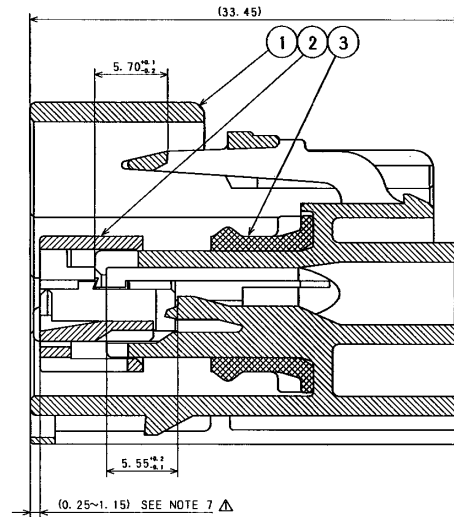
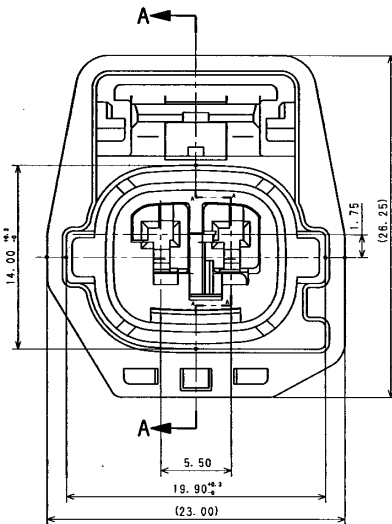
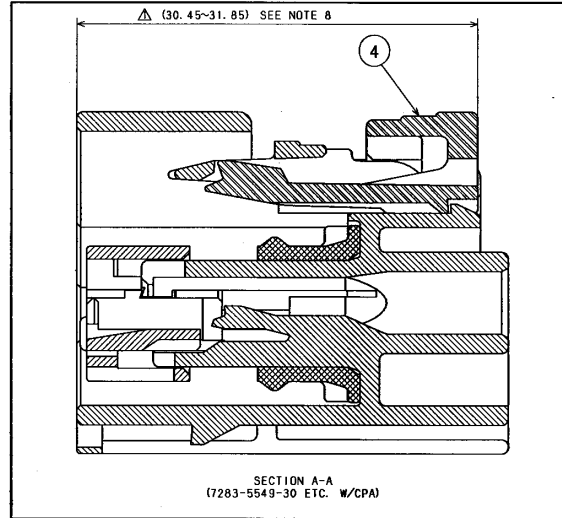
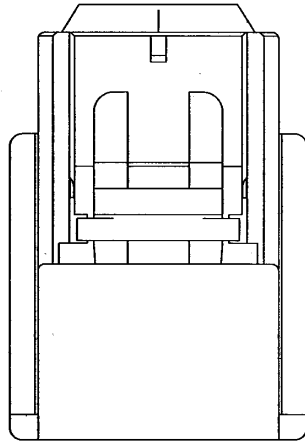
7283-5548-30 ETC.
KEYWAY A

GM PART NUMBER: N/A
GM CAD DATA NUMBER: ADN00224 (3-D) w/o CPA
ADN01288 (3-D) w/ CPA



7283-5558-10 ETC.
KEYWAY B

GM PART NUMBER: N/A
GM CAD DATA NUMBER: ADN01287 (3-D) w/o CPA
ADN01289 (3-D) w/ CPA



SUB ASSEMBLY PART NUMBER	NO.	PART NUMBER	PART NAME	MATERIAL	COLOR	QUANTITY
7283-5548-30 ETC.	①	SEE TABLE 2	2P 1.5mm YESC SEALED FEMALE HOUSING	HPA	SEE TABLE 2	1
	②	7158-4174	2P 1.5mm YESC SEALED FEMALE TPA	HPA	NATURAL	1
	③	7137-2713-50	2P 1.5mm YESC INTERFACIAL SEAL	SILICONE	RED	1
7283-5549-30 ETC.	①	SEE TABLE 2	2P 1.5mm YESC SEALED FEMALE HOUSING	HPA	SEE TABLE 2	1
	②	7158-4174	2P 1.5mm YESC SEALED FEMALE TPA	HPA	NATURAL	1
	③	7137-2713-50	2P 1.5mm YESC INTERFACIAL SEAL	SILICONE	RED	1
	④	7158-7080-50	YESC SEALED CPA	HPA	RED	1

SUB ASSEMBLY PART NUMBER	HOUSING PART NUMBER	KEYWAY	CPA	COLOR	YAZAKI INLINE MATING PART NUMBER
7283-5548-30	7183-5548-30	A	NO	BLACK	7282-5548-30
7283-5548-30	7183-5548-30	A	YES	BLACK	7282-5548-30
7283-5548-70	7183-5548-70	A	NO	YELLOW	7282-5548-70
7283-5549-70	7183-5548-70	A	YES	YELLOW	7282-5548-70
7283-5558-10	7183-5558-10	B	NO	DARK GRAY	7282-5558-10
7283-5559-10	7183-5558-10	B	YES	DARK GRAY	7282-5558-10
7283-5558-40	7183-5558-40	B	NO	LIGHT GRAY	N/A
7283-5559-40	7183-5558-40	B	YES	LIGHT GRAY	N/A

- △ NOTES:
- PARTS MUST BE PURCHASED FROM YAZAKI.
 - PARTS MUST BE FREE OF FLASH AND IMPERFECTIONS THAT AFFECT FUNCTION.
 - APPLICABLE TERMINAL: SEE 7116-4102-02:GP DRAWING (1.5mm YESC)
 - APPLICABLE WIRE SEAL: SEE 7158-3030-50:GP DRAWING (1.5mm YESC)
 - MATING PART NUMBER: SEE TABLE 2
 - PART DESIGNED TO SATISFY USCAR REVISION A, DATED AUGUST 7, 1995 (CLASS 3)
 - THIS DIMENSION SHOWS THE PRE-SET POSITION OF THE TPA.
 - THIS DIMENSION SHOWS THE PRE-SET POSITION OF THE CPA.
 - THIS DRAWING IS TO BE USED FOR INTERNAL YAZAKI PSW SUBMISSION FOR GENERAL MOTORS APPLICATIONS.
 - GM CAD DATA NUMBER: ADN00223 (2-D)

DATE	REVISION RECORD	NO.	CHKD
03.09.06	ADDED SUB ASSEMBLY AND REVISED NOTES	C06-A347	MR
11.08.01	NEW	C01-B338	B.C.

GENERAL TOLERANCE		APPROVED		CHECKED		DESIGN		DRAWN		PART NO.				
A	±0.15	±0.2	±0.3	±0.5	±0.75	±30°	0.1	GP	7283-5548-30-M	11.08.01	mm	5/1	3	7283-5548-30 ETC.
B	±0.2	±0.3	±0.55	±0.95	±1.4	±30°	0.15	APPROVED	7283-5548-30-M	11.08.01	mm	5/1	3	7283-5548-30:GP
C	±0.3	±0.5	±0.8	±1.4	±2	±30°	0.15	MASS	7283-5548-30-M	11.08.01	mm	5/1	3	7283-5548-30:GP

CUSTOMER	GENERAL MOTORS	MATL. SPEC.	SEE TABLE 1	TREAT. & FIN.
CUSTOMER PART NO.	N/A	CUSTOMER DWG NO.	N/A	N/A
OFFICE	YNA	TRIAL PART NO.	N/A	N/A
VENDOR	YAZAKI	VENDOR NO.	7283-5548-30-M	NAME
2P 1.5mm YESC SEALED FEMALE SUB-ASSEMBLY				
DWG TYPE	GP	DWG SOURCE	7283-5548-30-M	PART NO.
DWG DATE	11.08.01	DWG DATE	11.08.01	7283-5548-30 ETC.
UNIT	mm	UNIT	mm	DWG NO.
SCL	5/1	SCL	5/1	7283-5548-30:GP
ANGLE	3	ANGLE	3	YAZAKI CORPORATION