

PLEASE REFER TO THE DRAWING AND SPECIFICATION AND NOT BE USED FOR THE PURPOSE OF ANY PART OR USED FOR ANY PURPOSE WITHOUT THE PERMISSION OF YAZAKI MOTOR CO., LTD.

TABLE 1

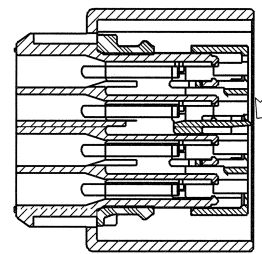
Qty.	No.	YAZAKI PART No.	REVISION RECORD	YAZAKI PART NAME	MATERIAL	COLOR
1	①	7183-4078-10	---	1.5 SYSTEM CONNECTOR 4P FEMALE HOUSING	PBT-GF15	DARK GRAY
1	②	7158-6376	---	1.5 SYSTEM CONNECTOR 4P FEMALE FRONT HOLDER	PBT-GF15	NATURAL
1	③	7137-2790-50	---	1.5 SYSTEM CONNECTOR 4P INTERFACE SEAL	SILICONE RUBBER	RED
1	④	7158-7657-50Δ	---	1.5 SYSTEM CONNECTOR CPA	PBT-GF15	RED

SUBASSEMBLY No.

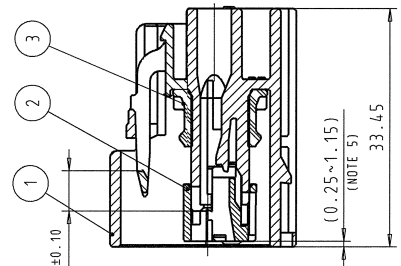
7283-4078-10
7283-4079-10

TABLE 2

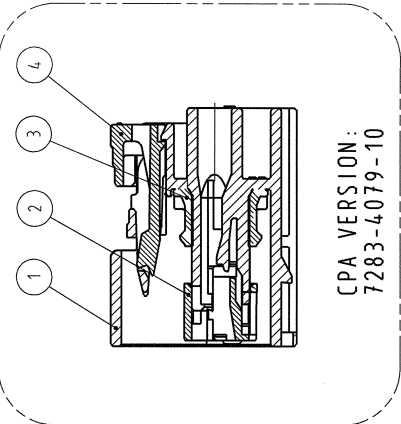
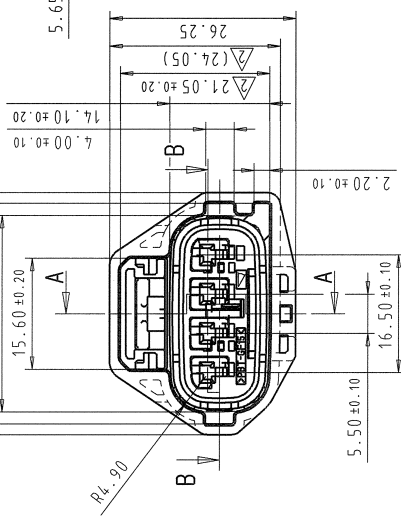
APPLICABLE TERMINALS	WIRE RANGE mm <sup>2</sup>	INSULATION RANGE DIA(mm)	TERMINAL PART NO.	SINGLE WIRE SEAL PART NO.
1.5 (F) TERMINAL (SEALED) TIN PLATED	0.3-0.5	1.2-1.7	7116-4102-02	7158-3030-50
	0.6-1.25	1.6-2.4	7116-4103-02	7158-3031-90
	1.5-2.0	2.35-2.7	7116-4105-02	7158-3033-40
1.5 (F) TERMINAL (SEALED) GOLD PLATED	0.3-0.5	1.2-1.7	7116-4102-08	7158-3030-50
	0.6-1.25	1.6-2.4	7116-4103-08	7158-3031-90



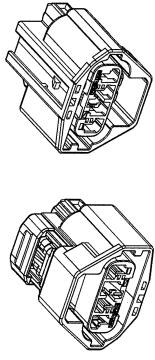
SECTION B-B



SECTION A-A



ISO VIEW (1:1)



NOTES:

1. MATERIAL: SEE TABLE 1;
2. COLOR: SEE TABLE 1;
3. APPLICABLE TERMINALS: SEE TABLE 2;
4. APPLICABLE WIRE SIZES: SEE TABLE 2;
5. THIS DIMENSION SHOWS THE PRESET POSITION OF THE FRONT HOLDER ON THE SUB-ASSEMBLY;
6. CORRECT FRONT HOLDER FUNCTION (LOCK AND RELEASE) IS ACHIEVED BY PUSHING THE LOCK ARM IN ARROW DIRECTION;
7. THE MATERIALS USED IN THIS PRODUCT ARE IN CONFORMITY WITH REQUIREMENTS OF EU ELV 2000/53/EC DIRECTIVE AND ASSOCIATED DOCUMENTS.

LET DATE	REVISION RECORD	NO.	CHKD
24.01.13	UPDATED TOL. & NOTES	Y13-0012	J.J.
04/02/27	CHANGED CPA PART No.	C04-0539	J.J.
04/02/09	NEW	C04-0526	J.J.

GENERAL TOLERANCE			
	10MAX	100MAX	250MAX
ANGLE	±30°	±0.75	±30°
ECCENT	0.1	±0.5	±1.4
ANGLE	±30°	±0.95	±1.4
ECCENT	0.15	±0.8	±1.4
MASS	SPECIFIED		

CUSTOMER PART NO.	CUSTOMER DWG NO.				
YEL-K					
OFFICE	VENDOR				
DWG TYPE	DWG SOURCE	DWG DATE	UNIT	SCL	ANGLE
R	NEW	05.02.04	mm	2:1	3
APPROVED	CHECKED	DESIGN	DRAWN	PART NO.	
J.SCHALLER		B.FRETZE	B.FRETZE	7283-4078-10 ETC.	
MASS	DATE	BY	CHKD	DWG NO.	
	24.01.13	J.J.	J.J.	7283-4078-10:R	
				SET DWG NO.	
				7283-4078-10:R	

