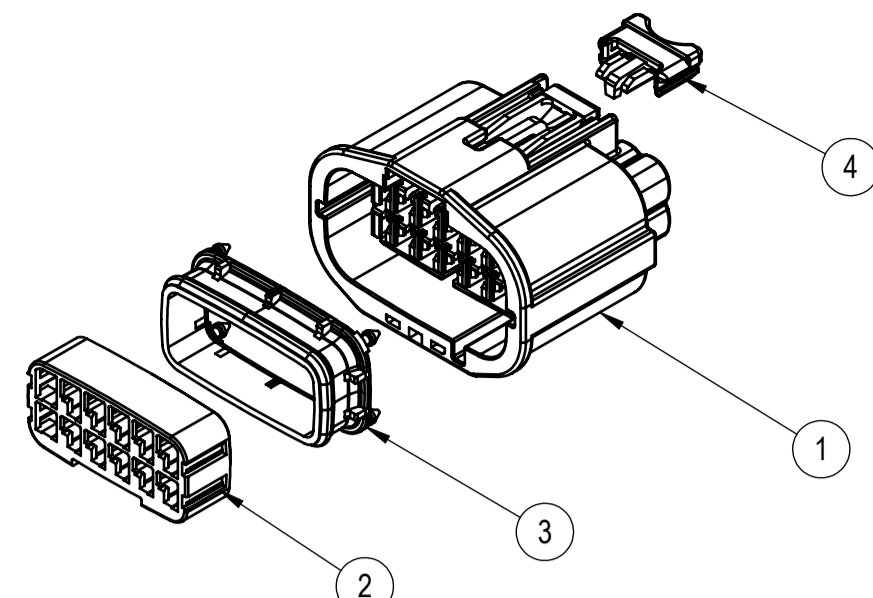
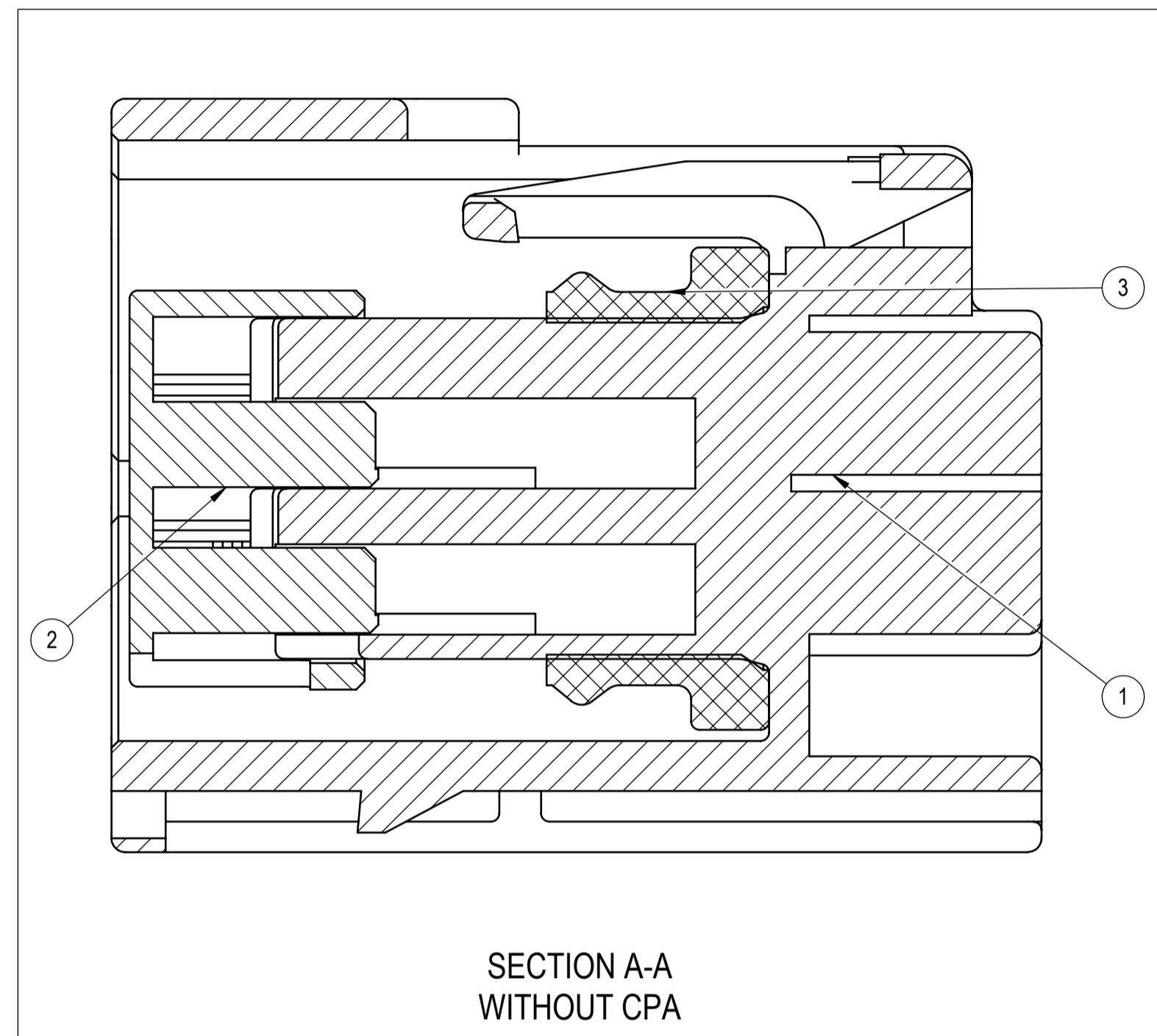
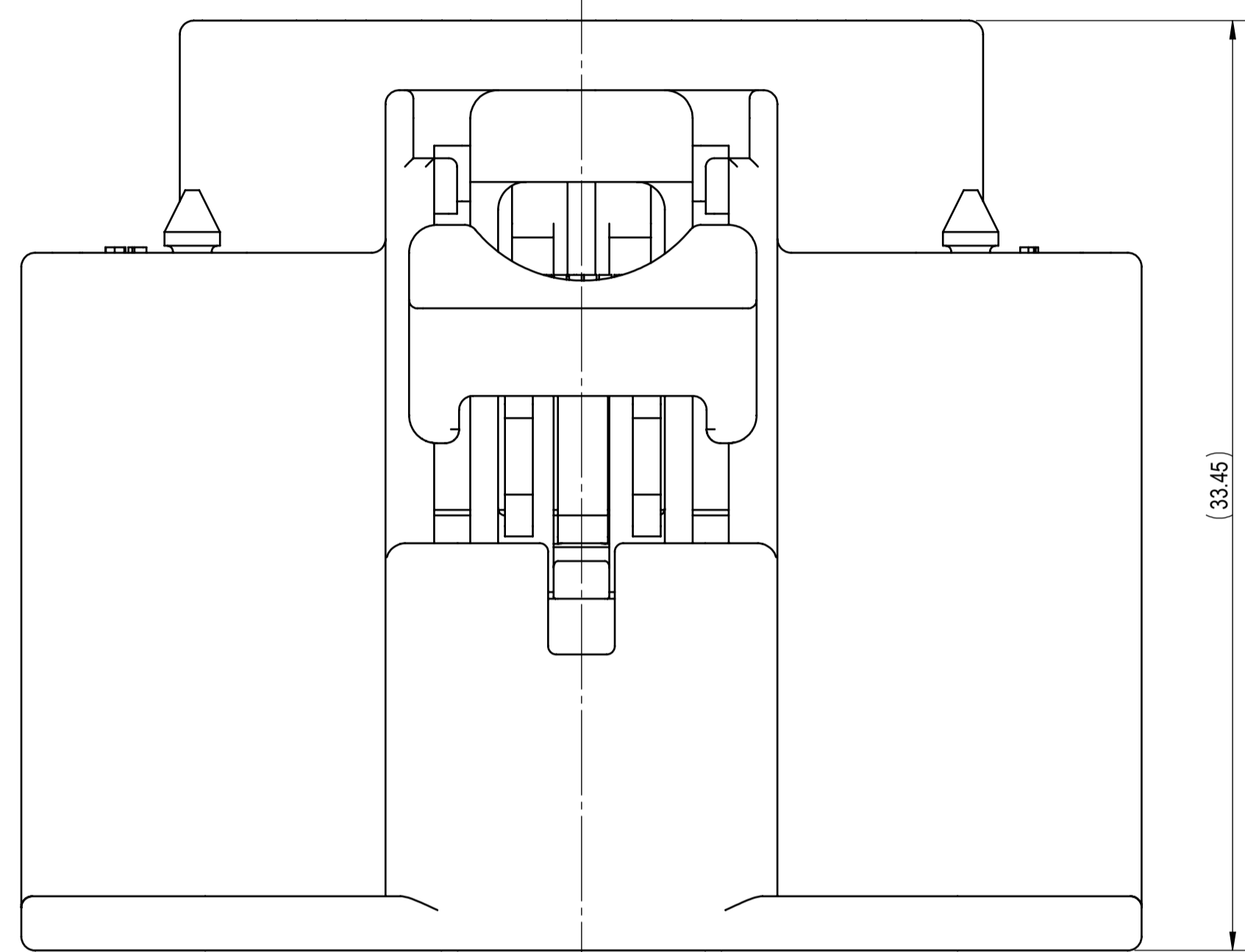


KEYWAY A

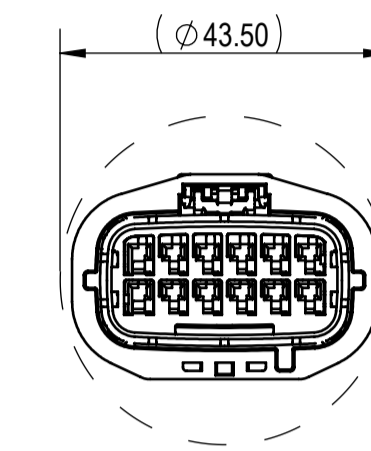


EXPLODED VIEW (1/1)

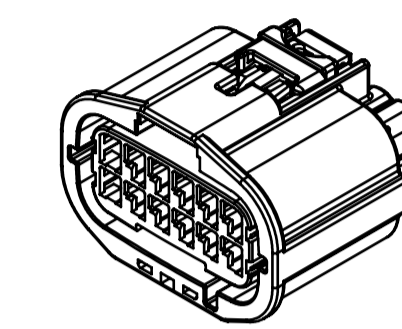
SUB-ASSEMBLY PART NUMBER	NO.	PART NUMBER	PART NAME	MATERIAL	COLOR	QUANTITY	MASS (g)
7283-2432-30	①	7183-2432-30	12 P 1.5 YESC REDUCED PITCH SEALED FEMALE HOUSING	PBT-GF15	BLACK	1	(16.75)
	②	7158-6171	12 P 1.5 YESC REDUCED PITCH SEALED FEMALE TPA	PBT-GF15	NATURAL	1	
	③	7137-2648-50	12 P 1.5 YESC REDUCED PITCH SEALED FEMALE INTERFACE SEAL	SILICONE	RED	1	
	④	7172-0156-50	YESC 0.64 & 1.5 REDUCED PITCH SEALED CPA	PBT-GF15	RED	1	
7283-2433-30	①	7183-2432-30	12 P 1.5 YESC REDUCED PITCH SEALED FEMALE HOUSING	PBT-GF15	BLACK	1	(16.50)
	②	7158-6171	12 P 1.5 YESC REDUCED PITCH SEALED FEMALE TPA	PBT-GF15	NATURAL	1	
	③	7137-2648-50	12 P 1.5 YESC REDUCED PITCH SEALED FEMALE INTERFACE SEAL	SILICONE	RED	1	



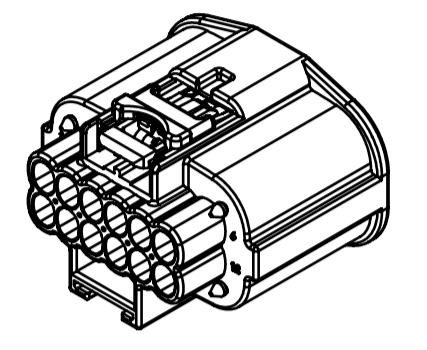
SECTION A-A WITHOUT CPA



RECOMMENDED PASS-THROUGH HOLE DIMENSION (1mm CLEARANCE ALL AROUND) (1/1)



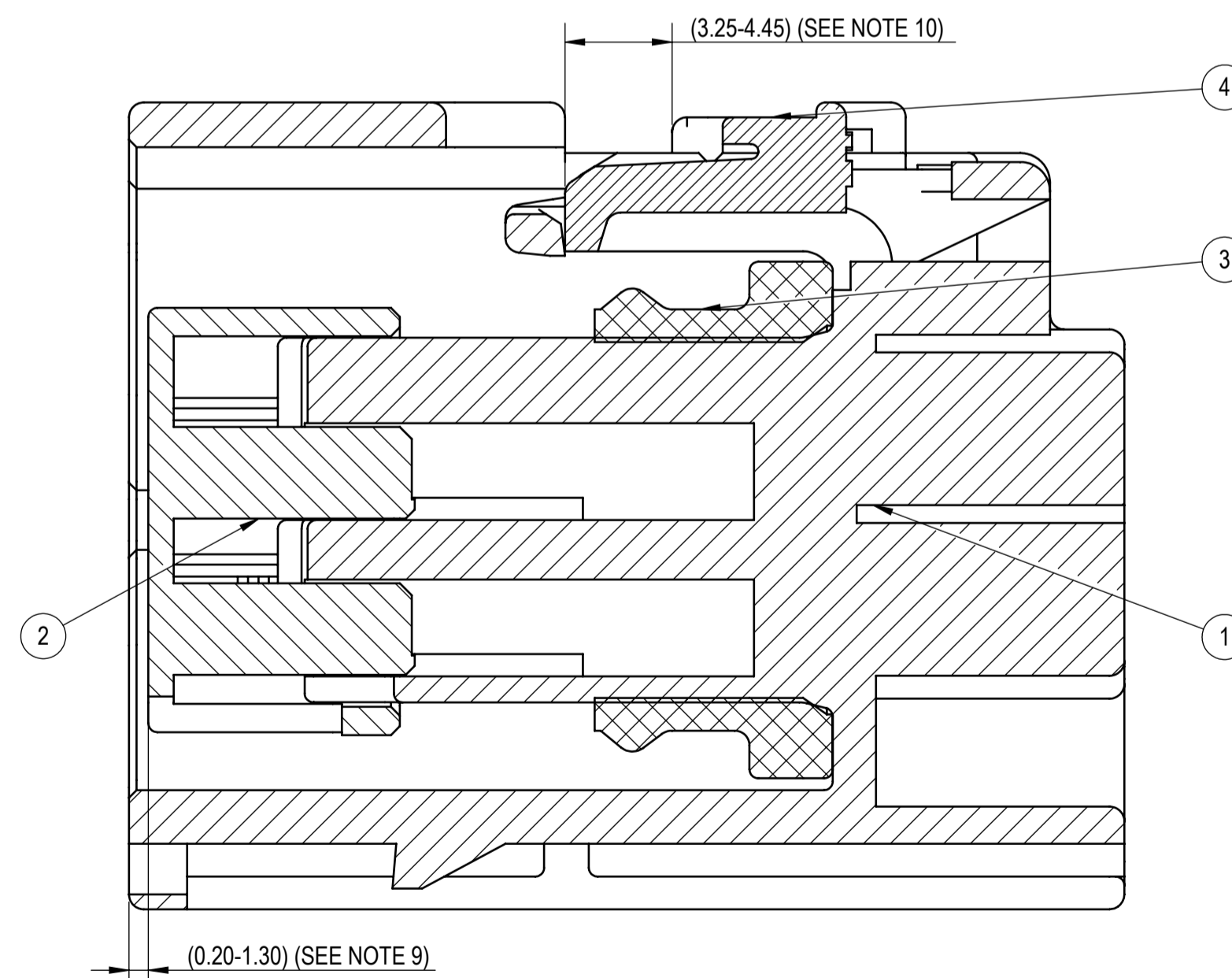
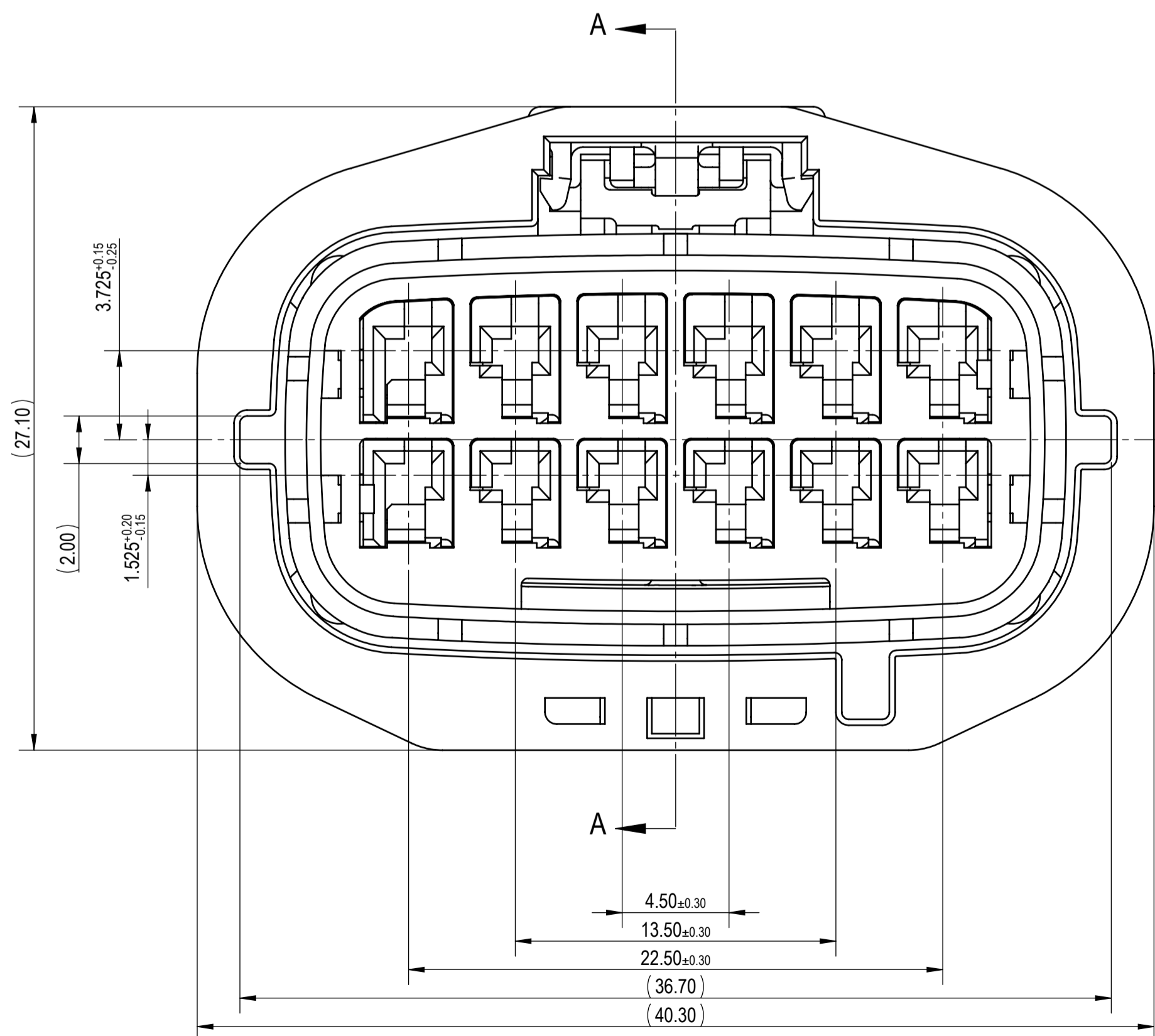
FRONT ISOMETRIC VIEW (1/1)



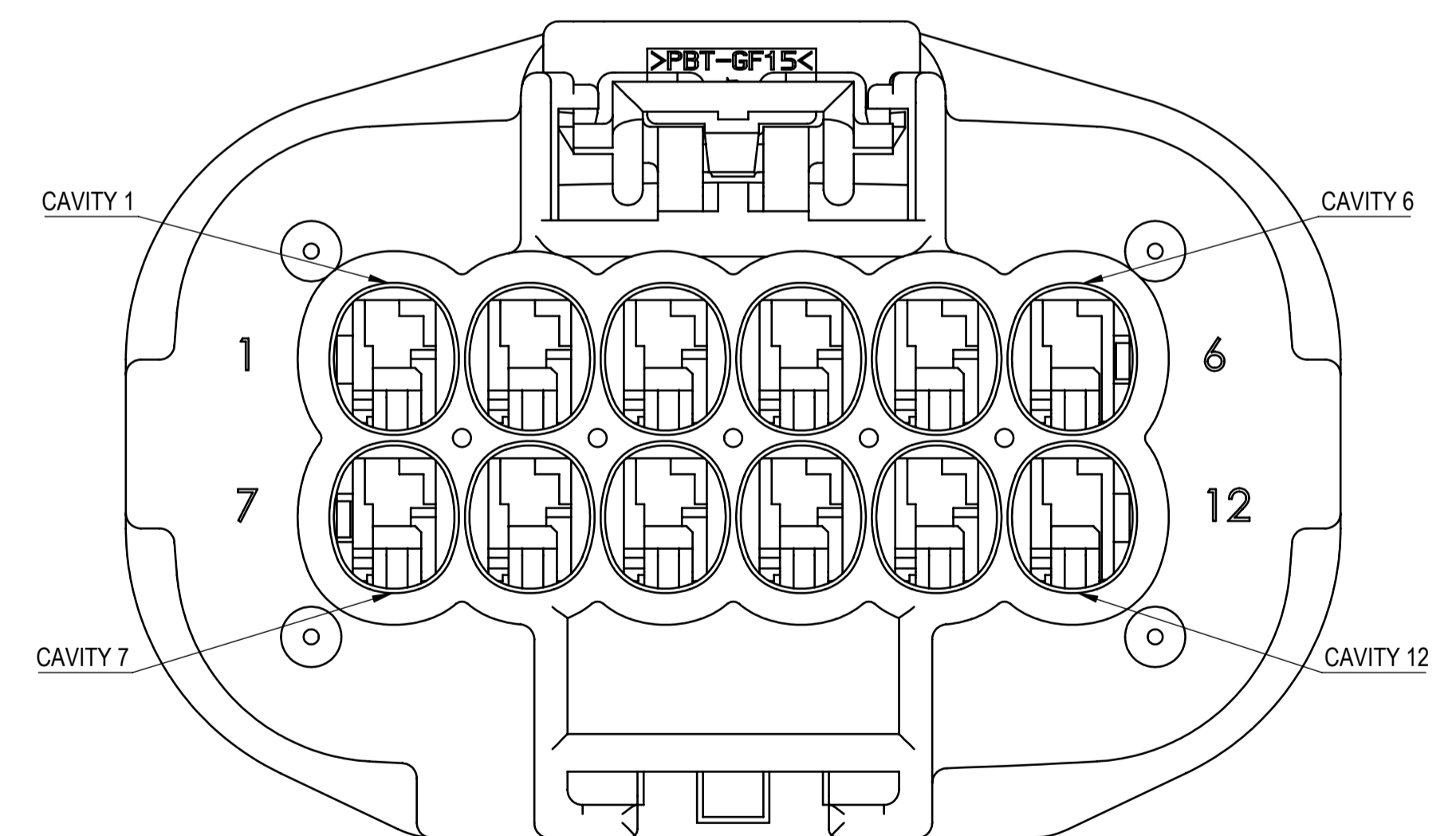
REAR ISOMETRIC VIEW (1/1)

NOTES:

- PARTS MUST BE PURCHASED FROM YAZAKI.
- PARTS MUST BE FREE OF FLASH AND IMPERFECTIONS THAT AFFECT FUNCTION.
- APPLICABLE TERMINAL: SEE 7116-4102-02:R DRAWING (1.5 YESC SEALED TIN PLATED)
MAX WIRE OD: 2.40mm
MIN WIRE OD: 1.10mm
SEE 7116-4102-06:R DRAWING (1.5 YESC SEALED SILVER PLATED)
MAX WIRE OD: 2.40mm
MIN WIRE OD: 1.10mm
SEE 7116-4102-08:R DRAWING (1.5 YESC SEALED GOLD PLATED)
MAX WIRE OD: 2.40mm
MIN WIRE OD: 1.10mm
- APPLICABLE WIRE SEAL: SEE 7158-3374-90:R DRAWING (1.5 REDUCED PITCH SEALED)
- APPLICABLE CAVITY PLUG: SEE 7158-3037-70:R DRAWING (1.5 REDUCED PITCH SEALED)
- MATING PART NUMBER: 7282-2432-30
- PART SATISFIES USCAR-2, REVISION 3, DATED APRIL 2001, (T3/N2/S2) WITH THE FOLLOWING EXCEPTIONS:
5.4.2. CONNECTOR TO CONNECTOR MATING FORCE = 76N MAX.
- PART TO COMPLY WITH YPES-31-038 REQUIREMENTS.
- THIS DIMENSION SHOWS THE PRE-SET POSITION OF THE TPA.
- THIS DIMENSION SHOWS THE PRE-SET POSITION OF THE CPA.
- THIS DRAWING IS TO BE USED FOR INTERNAL YAZAKI PSW SUBMISSION.
- CLIP SLOT: BASED ON 11mm CLIP SLOT. (USCAR 11mm CLIP SLOT, EWCAP-005-11, REV C)
- HANDLING MANUAL NUMBER: YPES-15-1227E



SECTION A-A



LET	DATE	REVISION RECORD	NO.	CHKD
-	11-17-2017	NEW	C17-AB97	A.C.

GENERAL TOLERANCE												
A	±0.15	±0.20	±0.30	±0.50	±0.75	±0.20	±0.30	±0.50	±2.50	±3°	0.1	±3°
B	±0.20	±0.30	±0.55	±0.95	±1.40	±0.20	±0.30	±0.50	±2.50	±3°	0.1	±3°
C	±0.30	±0.50	±0.80	±1.40	±2.00	±0.20	±0.30	±0.50	±2.50	±3°	0.15	±3°
SPECIFIED MASS (SEE TABLE 2)												

CUSTOMER		CUSTOMER DWG NO.		MATL SPEC.	SEE TABLE	TREAT. & FIN.	N/A
CUSTOMER PART NO.		TRIAL PART NO.		NAME			
OFFICE YNA		TRIAL PART NO.		12P 1.5 YESC REDUCED PITCH SEALED			
VENDOR		VENDOR NO.		FEMALE CONNECTOR SUB-ASSEMBLY			
DWG TYPE R		DWG SOURCE 7283-2432-30:M		DWG DATE 11-17-2017		PART NO. 7283-2432-30, ETC.	
APPROVED		CHECKED		CHECKED		DWG NO. 7283-2432-30:R	
DESIGN TONY HUYNH		DRAWN ALEJANDRO CALLEROS		05-17-2002		02-26-2018	
YAZAKI CORPORATION							