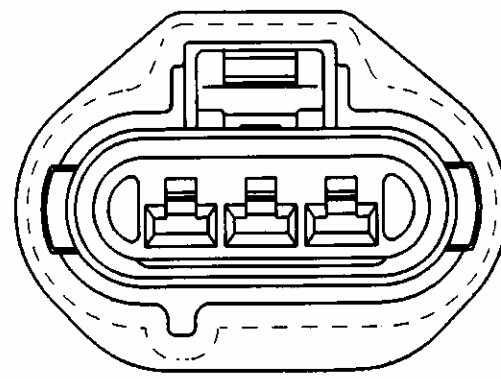
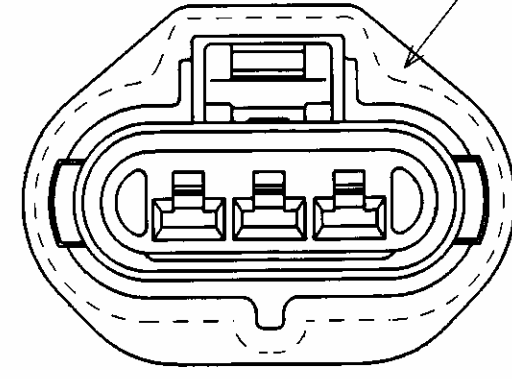


"A" POLARITY
7283-1334-30
(TPS SENSOR CONNECTOR)

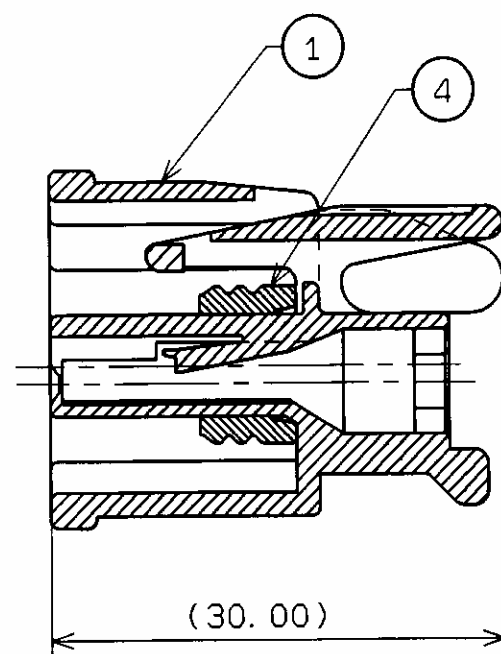
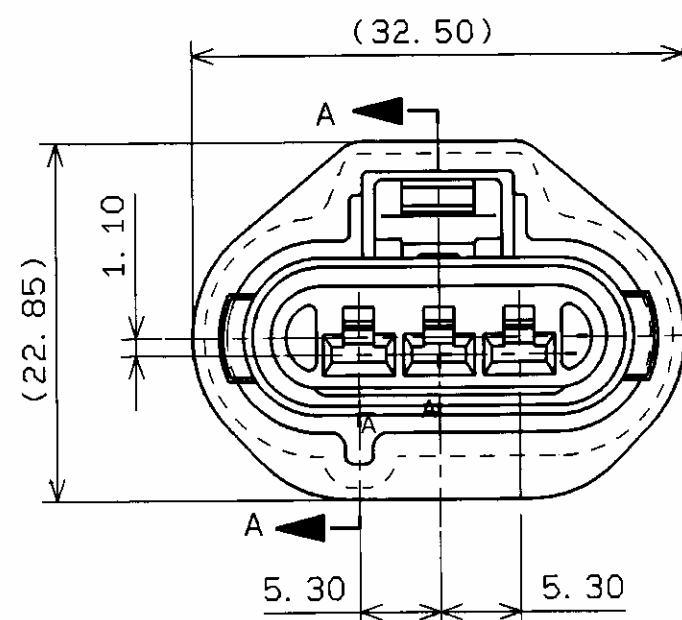
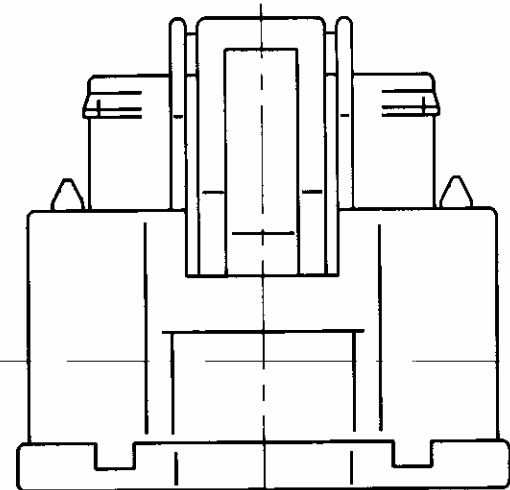


"B" POLARITY
7283-1333-10
(PFE SENSOR CONNECTOR)



"C" POLARITY
7283-1335-40
(TPTA SENSOR CONNECTOR)

QTY.	NO.	PART NO.	MATERIAL	COLOR
	1	① 7183-1333-10	PBT	DK GREY
1		② 7183-1334-30	PBT	BLACK
1		③ 7183-1335-40	PBT	LT GREY
1	1	④ 7137-1585-40	SILICONE RUBBER	LT GREY
7283-1335-40				
7283-1334-30				
7283-1333-10				
SUB ASS'Y NO.				



SECTION A-A

NOTES

1. APPLICABLE TERMINAL PART NO. : 7116-1520 ETC.
2. APPLICABLE WIRE SEAL NO. : 7157-3891
7157-7933
7157-7935
3. APPLICABLE REAR HOLDER NO. : 7157-6827-30

DRAWING NUMBER

7283-1333-10:RA

LET	DATE	REVISION RECORD	NO.	CHKD
-	10.21.97	NEW	C97-A797	R. W.

GENERAL TOLERANCE					ANGLE	ECCENT	DWG TYPE	DWG SOURCE	DWG DATE	UNIT	SCL	ANGLE
A	±0.15	±0.2	±0.3	±0.5	±0.75	±30'	0.1	R	NEW	12.18.92	mm	2/1 3
B	±0.2	±0.3	±0.55	±0.95	±1.4	±30'	0.1	APPROVED	CHECKED	CHECKED	DESIGN	DRAWN
©	±0.3	±0.5	±0.8	±1.4	±2	±30'	0.15	M. GRANT 10.21.97 10.21.97 10.21.97				
SPECIFIED					WEIGHT		9					

CUSTOMER FORD MOTOR COMPANY				MATT. SPEC.		TREAT. & FIN.	
CUSTOMER PART NO.		CUSTOMER DWG NO.		NAME DMS-TYPE CONNECTOR ASSEMBLY, 3P, F			
OFFICE YEE		TRIAL PART NO.		PFE/TPS/TPTA SENSOR CONNECTOR			
VENDOR		VENDOR NO.		PART NO. 7283-1333-10/7283-1334-30/7283-1335-40			
				DWG NO. 7283-1333-10:RA			
				YAZAKI CORPORATION			

ISSUE MARK