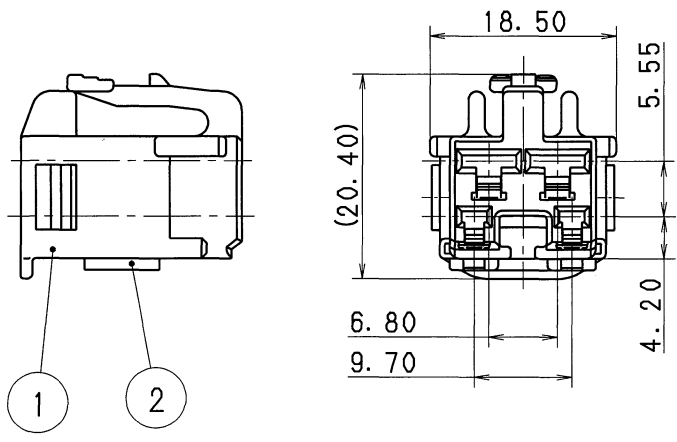
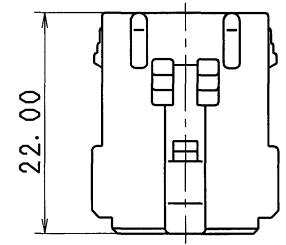


TABLE 1	SUB ASSEMBLY PART NO. AND CH. CODE	NO.	PART NO. AND CH. CODE	△ PART NAME	MATERIAL	COLOR	QTY.
7283-1144 ETC.		①	SEE TABLE 2	2. 3Ⅱ 2P+4. 8 2P HYBRID HOUSING FEMALE	HPA	SEE TABLE 2	1
		②	7158-4027	2. 3Ⅱ 2P+4. 8 2P HYBRID HOUSING SPACER FEMALE	HPA	NATURAL	1

TABLE 2	SUB ASSEMBLY PART NO. AND CH. CODE	PART NO. AND CH. CODE	COLOR
	7283-1144	7183-1144	NATURAL
	7283-1144-10	7183-1144-10	DARK GRAY
	7283-1144-30	7183-1144-30	BLACK
	7283-1144-40	7183-1144-40	LIGHT GRAY
	7283-1144-50	7183-1144-50	ORANGE
	7283-1144-60	7183-1144-60	GREEN
	7283-1144-70	7183-1144-70	YELLOW
	7283-1144-80	7183-1144-80	BROWN
	7283-1144-90	7183-1144-90	BLUE



注記

- 1. かん合相手品番 : 7282-1146 ETC.
- △ 2. 取扱説明書No. : (2. 3Ⅱ) YPES-15-080
(4. 8) YPES-15-125

NOTES

- 1. MATING PART NO. : 7282-1146 ETC.
- △ 2. HANDLING MANUAL NO. : (2. 3Ⅱ) YPES-15-080
(4. 8) YPES-15-125

ISSUE MARK

△ 12. 06. 20 CHANGED PART NAME, ETC.		C12-Z495	E. I	CUSTOMER		MATERIAL SPEC. SEE TABLE 1		TREAT. & FIN.	
△ 96. 11. 15 CHANGED FORM		C96-N053	H. K	CUSTOMER PART NO.		CUSTOMER DWG NO.		NAME △ 2. 3Ⅱ 2P+4. 8 2P HYBRID	
96. 04. 15 NEW		C96-L675	H. K	OFFICE		TRIAL PART NO.		HOUSING FEMALE SUB ASSEMBLY	
LET	DATE	REVISION RECORD	NO.	CHKD	VENDOR		PART NO. CH. CODE 7283-1144 ETC.		
GENERAL TOLERANCE					VENDOR NO.				
	10MAX	50MAX	100MAX	250MAX	2500V	ANGLE	ECCENT	DWG TYPE	DWG SOURCE
A	±0. 15	±0. 2	±0. 3	±0. 5	±0. 75	±30'	0. 1	R	NEW
B	±0. 2	±0. 3	±0. 55	±0. 95	±1. 4	±30'	0. 1	APPROVED	CHECKED
◎	±0. 3	±0. 5	±0. 8	±1. 4	±2	±30'	0. 15	M. FUKUDA	T. HIRAKAWA
SPECIFIED					MASS				
					12. 06. 20 12. 06. 20				
					96. 03. 28 12. 06. 20				
					T. MIWA E. ITALIA				
					DWG NO. 7283-1144:R SET DWG NO.				
					YAZAKI CORPORATION				