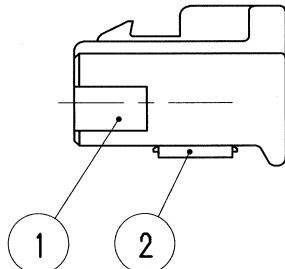
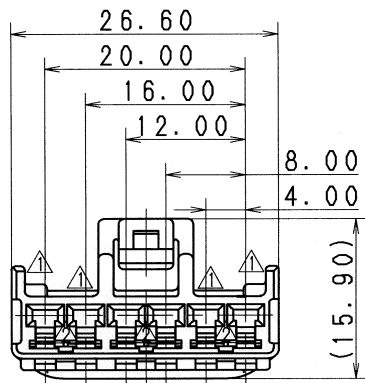
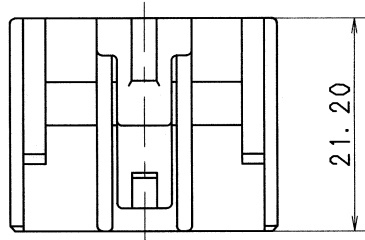


1

2

3

TABLE 1	SUB ASSEMBLY PART NO. AND CH. CODE	NO.	PART NO. AND CH. CODE	MATERIAL	COLOR	QTY.
	7283-1061 ETC.	①	SEE TABLE 2	△ PBT	SEE TABLE 2	1
		②	7157-4098	△ PBT	NATURAL	1



△ TABLE 2	SUB ASSEMBLY PART NO. AND CH. CODE	PART NO. AND CH. CODE	COLOR
	7283-1061, □	7183-1061	NATURAL
	7283-1061-10, □	7183-1061-10	DARK GRAY
	7283-1061-30, □	7183-1061-30	BLACK
	7283-1061-40, □	7183-1061-40	LIGHT GRAY
△	7283-1061-50, □	7183-1061-50	ORANGE
△	7283-1061-60, □	7183-1061-60	GREEN
	7283-1061-90, □	7183-1061-90	BLUE

注記

1. 適用端子品番 : 7116-4020 ETC.

NOTE

1. APPLICABLE TERMINAL NO. : 7116-4020 ETC.

△	06/06/01	CORRECTION OF MATERIAL ETC.	C06-Z603	H. T
△	00/11/08	ELIMINATED COLOR NO. & NOTE	C00-M346	Y. S
△	99/09/09	CORRECT ALL ERRORS	C99-M400	T. M
△	96/01/29	CHANGED FORM. □	C96-L183	Y. Y
	90/11/10	NEW	C90-M210	M. H
LET	DATE	REVISION RECORD	NO.	CHKD

CUSTOMER		MATERIAL SPEC.	
CUSTOMER PART NO.		SEE TABLE 1	
OFFICE		TREAT. & FIN.	
VENDOR		NAME △ 2.3II 6P CONNECTOR	
VENDOR NO.		SUB ASSEMBLY FEMALE	

ISSUE MARK

GENERAL TOLERANCE								
	10MAX	50MAX	100MAX	250MAX	2500VR	ANGLE	ECCENT	
A	±0.15	±0.2	±0.3	±0.5	±0.75	±30'	0.1	
B	±0.2	±0.3	±0.55	±0.95	±1.4	±30'	0.1	
◎	±0.3	±0.5	±0.8	±1.4	±2	±30'	0.15	
SPECIFIED							MASS	g

DWG TYPE	DWG SOURCE	DWG DATE	UNIT	SCL	ANGLE
R	NEW	90/11/10	mm	2:1	3
APPROVED	CHECKED	CHECKED	DESIGN	DRAWN	
			Y. OHTA	L. LIM	
			88/12/13	06/06/01	

PART NO. CH. CODE	7283-1061 ETC.	SET DWG NO.
DWG NO.	7283-1061:R	
YAZAKI CORPORATION		

1

2

3

