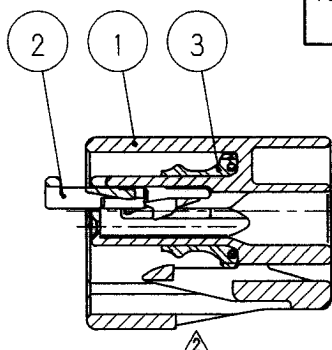
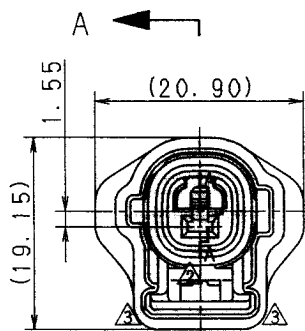


TABLE 1

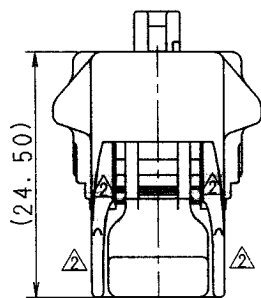
SUB ASSEMBLY PART NO. AND CH. CODE	NO.	PART NO. AND CH. CODE	MATERIAL	COLOR	QTY.
7283-1015-10 ETC.	①	SEE TABLE 2	PBT	SEE TABLE 2	1
	②	7157-4355	PBT	NATURAL	1
	③	7137-2602-80	SILICONE RUBBER	DARK BROWN	1

TABLE 2

SUB ASSEMBLY PART NO. AND CH. CODE	PART NO. AND CH. CODE	COLOR
7283-1015. Δ	7183-1015	NATURAL
7283-1015-10. Δ	7183-1015-10	DARK GRAY
7283-1015-30. Δ	7183-1015-30	BLACK
7283-1015-40. Δ	7183-1015-40	LIGHT GRAY
7283-1015-50. Δ	7183-1015-50	ORANGE
7283-1015-60. Δ	7183-1015-60	GREEN



SEC. A-A



注記

1. 適用端子番号 : 7116-4025 ETC.

NOTE

1. APPLICABLE TERMINAL NO.
: 7116-4025 ETC.

Δ 00.06.05	ELIMINATED COLOR NO. & CHANGED FORM	C00-L766	C. T									ISSUE MARK			
Δ 97.05.08	CHANGED FORM & ADDED PART NO. Δ	C97-L768	H. K	CUSTOMER				MATT. SPEC. SEE TABLE 1				TREAT. & FIN.			
Δ 90.08.01	ADDED PART NO.	C90-L865	M. H	CUSTOMER PART NO.				CUSTOMER DWG NO.							
90.04.18	NEW	C90-L418	K. O	OFFICE				TRIAL PART NO.				NAME 090II 1P SEALED CONNECTOR			
LET	DATE	REVISION RECORD NO.	CHKD	VENDOR								HOUSING FEMALE SUB ASSEMBLY			
GENERAL TOLERANCE				VENDOR NO.											
	10MAX	50MAX	100MAX	250MAX	2500VR	ANGLE	ECCENT	DWG TYPE	DWG SOURCE	DWG DATE	UNIT	SCL	ANGLE	PART NO.	7283-1015-10 ETC.
A	± 0.15	± 0.2	± 0.3	± 0.5	± 0.75	$\pm 30'$	0.1	R	NEW	90.04.18	mm	$\Delta 2/1$	3	CH. CODE	
B	± 0.2	± 0.3	± 0.55	± 0.95	± 1.4	$\pm 30'$	0.1	APPROVED	CHECKED	CHECKED	DESIGN	DRAWN	DWG NO.	7283-1015:R	SET DWG NO.
C	± 0.3	± 0.5	± 0.8	± 1.4	± 2	$\pm 30'$	0.15	加藤	山梨	福田	YAMAMOTO	Y. HATORI	YAZAKI CORPORATION		
SPECIFIED			MASS		g		00.06.27	00.06.26	00.06.22	89.07.05	00.06.05				

1

2

3