

TABLE 1

YAZAKI SUB ASSEMBLY PART NO.	NO.	YAZAKI PART NO.	MATERIAL	COLOR	QTY.
7282-7031-10 ETC.	①	△ SEE TABLE 2	PBT	△ SEE TABLE 2	1
	②	7157-4122	PBT	NATURAL	1

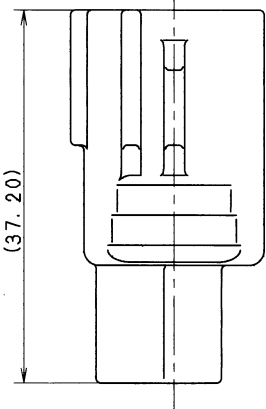
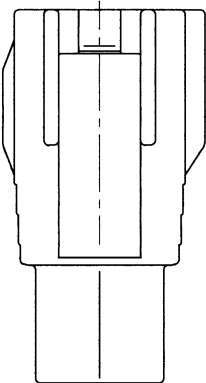
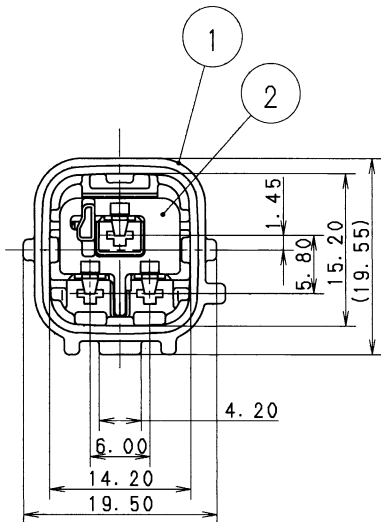


TABLE 2

YAZAKI SUB ASSEMBLY PART NO.	YAZAKI PART NO.	COLOR
△ 7282-7031	7182-7031	NATURAL
7282-7031-10	7182-7031-10	DARK GRAY
△ 7282-7031-30	7182-7031-30	BLACK
△ 7282-7031-40	7182-7031-40	LIGHT GRAY
△ 7282-7031-50	7182-7031-50	ORANGE
△ 7282-7031-60	7182-7031-60	GREEN
△ 7282-7031-80	7182-7031-80	BROWN
△ 7282-7031-90	7182-7031-90	BLUE

NOTES

1. APPLICABLE TERMINAL PART NO. :
 090 I 7114-4025 (AVS 0.3 ~ AVS 0.5)
 7114-4026 (AVS 0.5 ~ AVS 1.25)
 7114-4027 (AVSS 2.0)

2. APPLICABLE RUBBER STOPPER PART NO. :
 7157-3648 (AVS 0.5~AEX 1.25)

△ 3. MATING PART NO. : 7283-7031-10 ETC.

注記

1. 適用端子番: 090 I 7114-4025 (AVS 0.3~AVS 0.5)
 7114-4026 (AVS 0.5~AVS 1.25)
 7114-4027 (AVSS 2.0)

2. 適用ゴム栓番: 7157-3648 (AVS 0.5~AEX 1.25)
 △ 3. 嵌合相手番: 7283-7031-10 ETC.

ISSUE MARK

CUSTOMER										MATL. SPEC.				TREAT. & FIN.		
CUSTOMER PART NO.					CUSTOMER DWG NO.					NAME △ 090 I 3P SEALED CONNECTOR						
OFFICE					TRIAL PART NO.					HOUSING MALE SUB ASSEMBLY						
VENDOR					VENDOR NO.					PART NO. △ 7282-7031-10 ETC.						
GENERAL TOLERANCE										CH. CODE						
	10MAX	50MAX	100MAX	250MAX	250OVR	ANGLE	ECCENT	DWG TYPE	DWG SOURCE	DWG DATE	UNIT	SCL	ANGLE	DWG NO. 7282-7031-10:R		
A	±0.15	±0.2	±0.3	±0.5	±0.75	±30'	0.1	R	NEW	90.04.23	mm	△ 2/1	3	YAZAKI CORPORATION		
B	±0.2	±0.3	±0.55	±0.95	±1.4	±30'	0.1	APPROVED	CHECKED	CHECKED	DESIGN	DRAWN				
©	±0.3	±0.5	±0.8	±1.4	±2	±30'	0.15	M. TSUJI AKIMOTO		福田 福田						
SPECIFIED							MASS		96.05.13 96.05.08 96.05.07		88.08.05 96.04.22					