

1 2 3

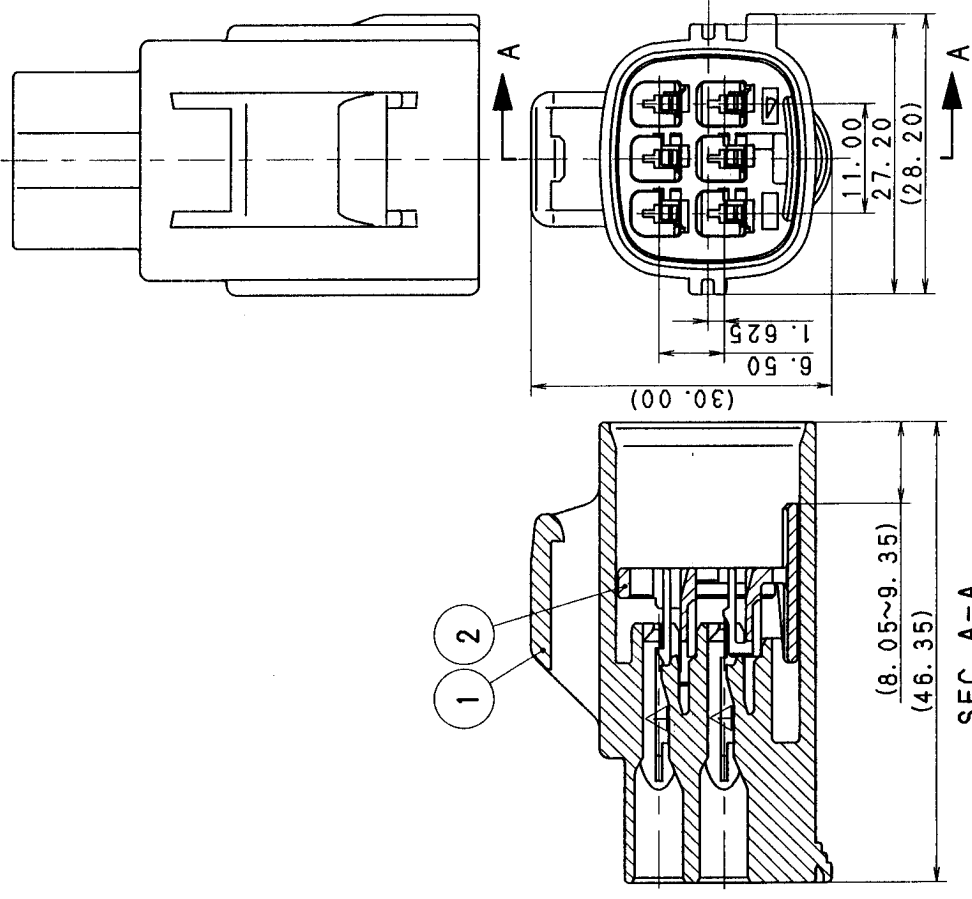
QTY.	NO.	PART NO.	MATERIAL	COLOR
1	①	7182-5553-10	HPA	DARK GRAY
1	②	7182-5553-30	HPA	BLACK
1	③	7158-4177	HPA	NATURAL

7282-5553-30	△7282-5553-10	SUB ASS'Y NO.
--------------	---------------	---------------

- 注記
1. 適合相手品番 : 7283-5553-10 ETC.
 2. 適用端子品番 : 7114-4102-02 ETC.
 3. 適用工口品番 : 7158-3030-50 ETC.

NOTES

1. MATING PART NO. : 7283-5553-10 ETC.
2. APPLICABLE TERMINAL PART NO. : 7114-4102-02 ETC.
3. APPLICABLE WIRE SEAL NO. : 7158-3030-50 ETC.



SEC. A-A

△ 98.09.02	ADDED PART NO.	C98-M211	Y.T	CUSTOMER PART NO.	CUSTOMER DWG NO.	MATL. SPEC.	SEE TABLE	TREAT. & FIN.	ISSUE MARK
△ 98.02.25	CHANGED FORM. [A]	C98-L335	T.T			NAME	1.5 SYSTEM SEALED CONNECTOR		
△ 96.07.15	NEW	C96-M161	H.K	OFFICE	TRIAL PART NO.		6P (M) SUB ASS'Y		
LET	DATE	REVISION RECORD	NO.	CHKD	VENDOR				
GENERAL TOLERANCE									
A	±0.15	±0.2	±0.3	±0.5	±0.75	±30'	±30'	±30'	±30'
B	±0.2	±0.3	±0.55	±1.4	±1.4	±30'	±30'	±30'	±30'
C	±0.3	±0.5	±0.8	±1.4	±2	±30'	±30'	±30'	±30'
SPECIFIED									
APPROVED CHECKED CHECKED CHECKED DESIGN DRAWN Y. TOMITA YOSHIDA									
198.09.09 198.09.09 198.09.08 96.07.15 98.09.02									
PART NO. △7282-5553-10 ETC. [A]									
CH. CODE									
DWG NO. 7282-5553-10:R SET DWG NO.									
YAZAKI CORPORATION									



2

1

B

A

B

A