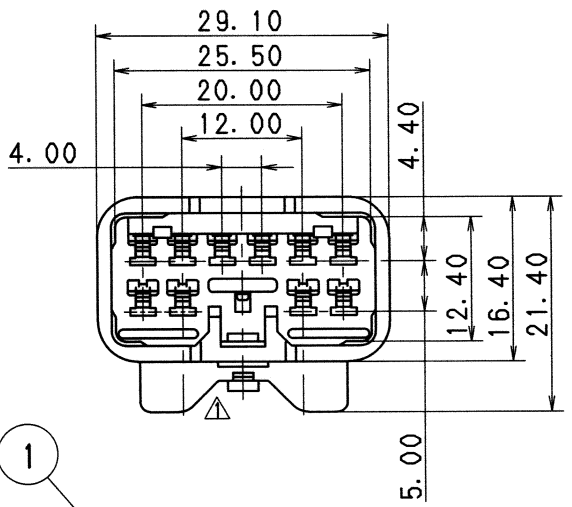


TABLE 1

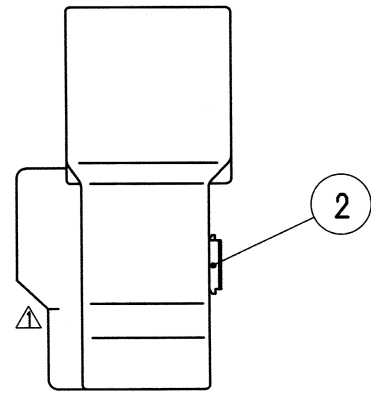
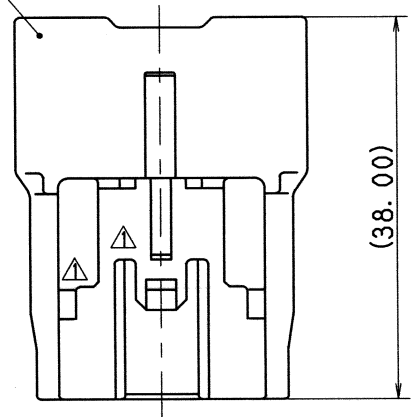
SUB ASSEMBLY PART NO. AND CH. CODE	NO.	PART NO. AND CH. CODE	MATERIAL	COLOR	QTY.
7282-1100 ETC.	①	SEE TABLE 2	△ HPA	SEE TABLE 2	1
	②	7157-4024	△ HPA	NATURAL	1

TABLE 2

SUB ASSEMBLY PART NO. AND CH. CODE	PART NO. AND CH. CODE	COLOR
7282-1100, △	7182-1100	NATURAL
7282-1100-10, △	7182-1100-10	DARK GRAY
7282-1100-30, △	7182-1100-30	BLACK
7282-1100-40, △	7182-1100-40	LIGHT GRAY
7282-1100-50, △	7182-1100-50	ORANGE
△ 7282-1100-60, △	7182-1100-60	GREEN
△ 7282-1100-80, △	7182-1100-80	BROWN
7282-1100-90, △	7182-1100-90	BLUE



1



2

NOTES

- 1. MATING PART NO. : 7283-1100 ETC.
- 2. APPLICABLE TERMINAL NO. : 7114-4020 ETC.

注記

- 1. 嵌合相手品番 : 7283-1100 ETC.
- 2. 適用端子品番 : 7114-4020 ETC.

△	04.05.18	ADDED COLOR PART NO.	C04-Z497	Y. I
△	98.12.23	ELIMINATED COLOR NO.	C98-N179	T. M
△	95.03.20	CHANGED MATERIAL. △	C95-L362	M. K
△	93.10.30	CHANGED MATERIAL & ADDED COLOR NO.	C93-P172	C. M
△	90.05.11	CHANGED FORM & ADD PART NO.	C90-L468	H. Y
	88.12.24	NEW	C89-L010	K. J
LET	DATE	REVISION RECORD	NO.	CHKD

CUSTOMER		MATL. SPEC.	TREAT. & FIN.
CUSTOMER PART NO.	CUSTOMER DWG NO.	SEE TABLE 1	
OFFICE	TRIAL PART NO.		
VENDOR			
VENDOR NO.			

NAME △ 2.3II (090II) 10P CONNECTOR	
SUB ASSEMBLY MALE	

GENERAL TOLERANCE							
	10MAX	50MAX	100MAX	250MAX	250OVR	ANGLE	ECCENT
A	±0.15	±0.2	±0.3	±0.5	±0.75	±30'	0.1
B	±0.2	±0.3	±0.55	±0.95	±1.4	±30'	0.1
C	±0.3	±0.5	±0.8	±1.4	±2	±30'	0.15
SPECIFIED							MASS
							g

DWG TYPE	DWG SOURCE	DWG DATE	UNIT	SCL	ANGLE
R	NEW	89.01.11	mm	2/1	3
APPROVED	CHECKED	CHECKED	DESIGN	DRAWN	
H. ISHIDA	T. HIRAKAWA	Y. IKEDA	Y. OHTA	J. GODINEZ	
04.5.18	04.5.18	04.05.18	88.04.15	04.05.18	

PART NO. CH. CODE	7282-1100 ETC.
DWG NO.	7282-1100:R
SET DWG NO.	
YAZAKI CORPORATION	

