

1

2

3

TABLE 1

SUB ASSEMBLY PART NO. AND CH. CODE	NO.	PART NO. AND CH. CODE	MATERIAL	COLOR	QTY.
7222-6423-30 ETC.	①	SEE TABLE 2	PBT	SEE TABLE 2	1
	②	△7137-2423-80	SILICONE RUBBER	BROWN	1

TABLE 2

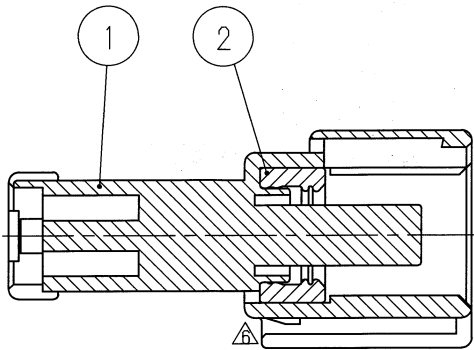
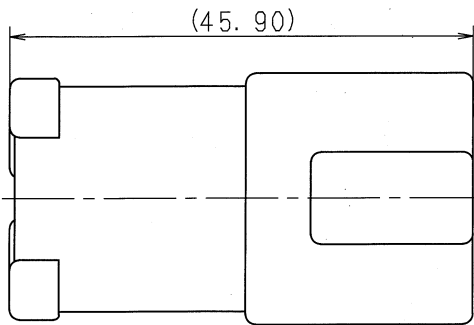
SUB ASSEMBLY PART NO. AND CH. CODE	PART NO. AND CH. CODE	COLOR
7222-6423-30, ▢	△7122-6423-30	BLACK
△7222-6423-50, ▢	7122-6423-50	ORANGE

注記

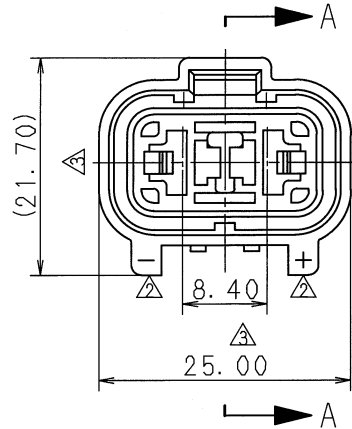
- 1. 嵌合相手品番: 7123-6423-30, 7123-6423-50 △
- △ 2. 適用端子品番: 7114-2873, 7114-2874
- △ 3. 適用リヤホルダ品番: 7157-6720
- △ 4. 適用ゴム栓品番: 7157-3570, 7157-3571-80

△ NOTES

- 1. MATING PART NO. : 7123-6423-30
: 7123-6423-50 △
- △ 2. APPLICABLE TERMINAL NO. : 7114-2873
: 7114-2874
- △ 3. APPLICABLE REAR HOLDER NO. : 7157-6720
- △ 4. APPLICABLE WIRE SEAL PART NO. : 7157-3570
: 7157-3571-80



SEC. A-A



△	01.06.11	ELIMINATE REAR HOLDER COLOR NO.	C01-X577	H. Y
△	00.02.02	CHANGED FORM ETC. ▢	C00-L145	M. K
△	99.06.18	CHANGED NOTE	C99-L831	O. S
△	91.01.29	ADDED PART NO.	C91-6165	M. K
△	90.04.20	DELETE DIMENSION ETC.	C90-6410	H. Y
△	89.12.11	ADD. THE STAMP ETC.	C89-7589	M. K
△	87.12.07	REVISE NOTE	7MC-4122	M. M
△	87.12.01	NEW	7MC-4121	M. M
LET	DATE	REVISION RECORD	NO.	CHKD

CUSTOMER		MATL. SPEC.	TREAT. & FIN.
CUSTOMER PART NO.	CUSTOMER DWG NO.	SEE TABLE	
OFFICE	TRIAL PART NO.	NAME X TYPE CONNECTOR	
VENDOR		△ SUB ASSEMBLY 2PM △	
VENDOR NO.			

GENERAL TOLERANCE								
	10MAX	50MAX	100MAX	250MAX	2500VR	ANGLE	ECCENT	
A	±0.15	±0.2	±0.3	±0.5	±0.75	±30'	0.1	
B	±0.2	±0.3	±0.55	±0.95	±1.4	±30'	0.1	
◎	±0.3	±0.5	±0.8	±1.4	±2	±30'	0.15	
SPECIFIED							MASS	g

DWG TYPE	DWG SOURCE	DWG DATE	UNIT	SCL	ANGLE	PART NO. CH. CODE
R	NEW	87.12.01	mm	2/1	3	7222-6423-30 ETC. △
APPROVED	CHECKED	CHECKED	DESIGN	DRAWN	DWG NO. 7222-6423-30:R SET DWG NO.	
吉田	—	吉田	MATSUNAGA	S.UEBO	YAZAKI CORPORATION	
01.06.25		2001.06.25	87.12.01	01.06.11		

ISSUE MARK

1

2

3

