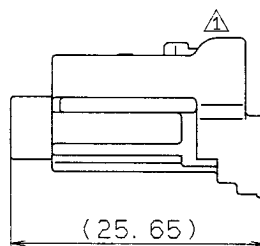
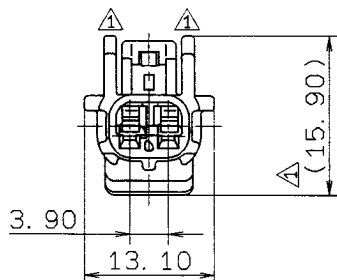
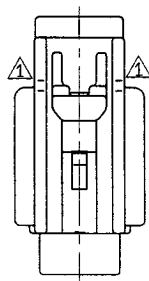


1

2

3



注記

- 1) 嵌合相手品番 : 7282-7770-40
- 2) 適用端子品番 : 7116-1466-02 ETC.
- 3) 適用フロントホルダ品番 : 7158-4881
- 4) 適用ゴム栓品番 : 7158-3120-90 ETC.

NOTES

- 1) MATING PART NO. : 7282-7770-40
- 2) APPLICABLE TERMINAL NO. : 7116-1466-02 ETC.
- 3) APPLICABLE FRONT HOLDER NO. : 7158-4881
- 4) APPLICABLE SEAL RUBBER NO. : 7158-3120-90 ETC.



ISSUE MARK

										CUSTOMER				MATL. PBT (GRAY)		TREAT. & FIN.											
										CUSTOMER PART NO.				CUSTOMER DWG NO.													
99.04.22 CHANGED FORM, [A] C99-L594 M. F 98.03.16 NEW C98-L448 M. I										OFFICE				TRIAL PART NO.													
LET DATE REVISION RECORD NO. CHKD GENERAL TOLERANCE										VENDOR				VENDOR NO.													
										DWG TYPE		DWG SOURCE		DWG DATE		UNIT		SCL		ANGLE							
										R		NEW		98.03.16		mm		2/1		3							
A ±0.15 ±0.2 ±0.3 ±0.5 ±0.75 ±30' 0.1 B ±0.2 ±0.3 ±0.55 ±0.95 ±1.4 ±30' 0.1 (C) ±0.3 ±0.5 ±0.8 ±1.4 ±2 ±30' 0.15										APPROVED		CHECKED		CHECKED		DESIGN		DRAWN		PART NO. 7183-7770-40. [A]		CH. CODE					
SPECIFIED										MASS		g		99.05.28		99.05.27		99.05.25		96.11.27		99.04.22		PART NO. 7183-7770-40:R		SET DWG NO.	
										H		杉山修		梶井		M. TSUJI		HATORI		中山		YAZAKI CORPORATION					

1

2

3

