

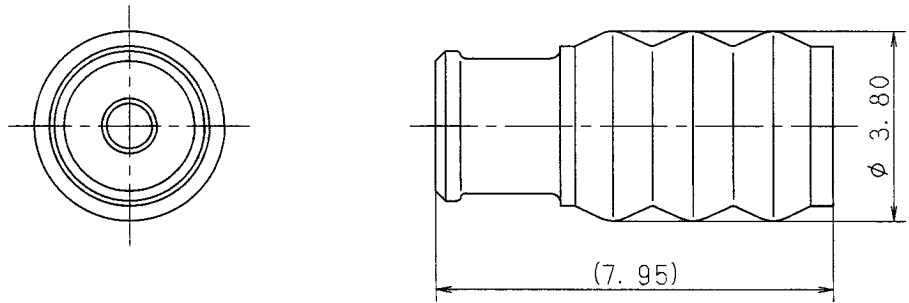
注記

- 1. 適用電線サイズ : CAVS 0.3, CAVUS 0.3~0.5
- △ 2. 適用端子品番 : 7114-1466-02, 7116-1466-02 ETC.
- △ 3. 適用コネクタ品番 : 7182-7779-40, 7183-7779-40 ETC.
- △ 4. ( ) 内品番は、エアバック (A/B) 回路及び特別管理回路に使用する時に適用すること。

NOTES

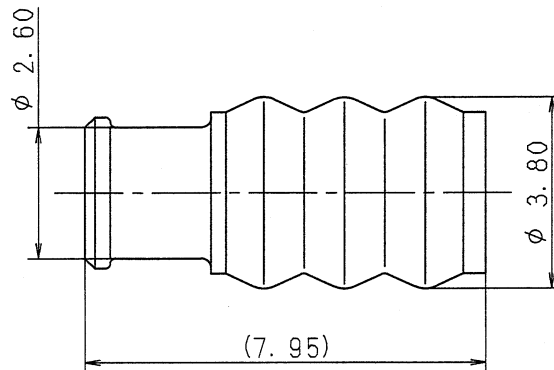
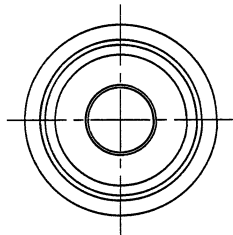
- 1. APPLICABLE WIRE SIZE : CAVS 0.3, CAVUS 0.3~0.5
- △ 2. APPLICABLE TERMINAL NO. : 7114-1466-02, 7116-1466-02 ETC.
- △ 3. APPLICABLE CONNECTOR NO. : 7182-7779-40, 7183-7779-40 ETC.
- △ 4. PART NUMBERS IN PARENTHESIS SHALL BE USED FOR AIR BAG (A/B) CIRCUITS AND OTHER CIRCUITS DESIGNATED FOR SPECIAL MONITORING.

RUBBER PART GENERAL TOLERANCE				
PART DIM.	1	2	(3)	
0 TO 3	± 0.2	± 0.3	± 0.4	
3 TO 6	± 0.2	± 0.4	± 0.5	
6 TO 10	± 0.3	± 0.5	± 0.6	
10 TO 18	± 0.3	± 0.6	± 0.8	
18 TO 30	± 0.4	± 0.8	± 1.0	
30 TO 50	± 0.5	± 1.0	± 1.5	
50 TO 80	± 0.6	± 1.2	± 2.0	
80 TO 120	± 0.7	± 1.4	± 2.5	
120 TO 180	± 0.8	± 1.6	± 3.0	
180 TO 250	± 1.0	± 2.0	± 4.0	
250 TO 315	± 1.2	± 2.5	± 5.0	
315 TO 400	± 1.5	± 3.0	± 6.0	
400 TO 500	± 1.8	± 3.5	± 7.0	
500 OVER	± 0.4 %	± 0.8 %	± 1.5 %	



ISSUE MARK

CUSTOMER										MATL. SILICONE RUBBER		TREAT. & FIN.				
CUSTOMER PART NO.					CUSTOMER DWG NO.					SPEC. (BLUE)						
△	00.03.17	ADDED PART NO. ETC.	C00-L396	T. Y						NAME RK-TYPE CONNECTOR						
	98.02.04	NEW	C98-L248	M. T	OFFICE					TRIAL PART NO.						
LET	DATE	REVISION RECORD	NO.	CHKD	VENDOR					X39658-7396						
GENERAL TOLERANCE					VENDOR NO.					WIRE SEAL						
	10MAX	50MAX	100MAX	250MAX	250OVR	ANGLE	ECCENT	DWG TYPE	DWG SOURCE	DWG DATE	UNIT	SCL	ANGLE	PART NO.	△7158-3120-90 (7B58-3120-90)	
A	±0.15	±0.2	±0.3	±0.5	±0.75	±30'	0.1	R	NEW	98.02.04	mm	10/1	3	CH. CODE	7158-3120-90:R	
B	±0.2	±0.3	±0.55	±0.95	±1.4	±30'	0.1	APPROVED	CHECKED	CHECKED	DESIGN	DRAWN	DWG NO.	7158-3120-90:R		
C	±0.3	±0.5	±0.8	±1.4	±2	±30'	0.15					SET DWG NO.				
SPECIFIED					MASS					YAZAKI CORPORATION						
					g											



RUBBER PART GENERAL TOLERANCE			
PART DIM.	1	2	(3)
0 TO 3	± 0.2	± 0.3	± 0.4
3 TO 6	± 0.2	± 0.4	± 0.5
6 TO 10	± 0.3	± 0.5	± 0.6
10 TO 18	± 0.3	± 0.6	± 0.8
18 TO 30	± 0.4	± 0.8	± 1.0
30 TO 50	± 0.5	± 1.0	± 1.5
50 TO 80	± 0.6	± 1.2	± 2.0
80 TO 120	± 0.7	± 1.4	± 2.5
120 TO 180	± 0.8	± 1.6	± 3.0
180 TO 250	± 1.0	± 2.0	± 4.0
250 TO 315	± 1.2	± 2.5	± 5.0
315 TO 400	± 1.5	± 3.0	± 6.0
400 TO 500	± 1.8	± 3.5	± 7.0
500 OVER	± 0.4 %	± 0.8 %	± 1.5 %

NOTES

- △ 1. APPLICABLE WIRE SIZE: CAVS 0.5~0.85, CAVUS 0.85
- △ 2. PART NUMBERS IN PARENTHESIS SHALL BE USED FOR AIR BAG (A/B) CIRCUITS AND OTHER CIRCUITS DESIGNATED FOR SPECIAL MONITORING.

注記

- △ 1. 適用電線サイズ: CAVS 0.5~0.85, CAVUS 0.85
- △ 2. ( ) 内品番は、エアバッグ (A/B) 回路及び特別管理回路に使用する時に適用すること。

ISSUE MARK

△ 02.02.22		CHANGED NOTE	C02-X263	K. U	CUSTOMER		MATL. SILICONE RUBBER		TREAT. & FIN.					
△ 98.05.29		ADDED A/B PART NO.	C98-L988	M. K	CUSTOMER PART NO.	CUSTOMER DWG NO.	SPEC. (BROWN)							
96.09.13		NEW	C96-7033	M. K	OFFICE	TRIAL PART NO.	NAME 040 SEALED CONNECTOR							
LET	DATE	REVISION RECORD	NO.	CHKD	VENDOR	WIRE SEAL								
GENERAL TOLERANCE				VENDOR NO.										
	10MAX	50MAX	100MAX	250MAX	250OVR	ANGLE	ECCENT	DWG TYPE	DWG SOURCE	DWG DATE	UNIT	SCL	ANGLE	PART NO.
A	±0.15	±0.2	±0.3	±0.5	±0.75	±30'	0.1	R	NEW	96.09.13	mm	10/1	3	7158-3121-80 △ (7B58-3121-80)
B	±0.2	±0.3	±0.55	±0.95	±1.4	±30'	0.1	APPROVED	CHECKED	CHECKED	DESIGN	DRAWN	DWG NO.	7158-3121-80:R SET DWG NO.
C	±0.3	±0.5	±0.8	±1.4	±2	±30'	0.15				KOUMATSU	OHKUBO	YAZAKI CORPORATION	
SPECIFIED				MASS	g	02.02.25		02.02.25	96.07.12	02.02.22				