

1

2

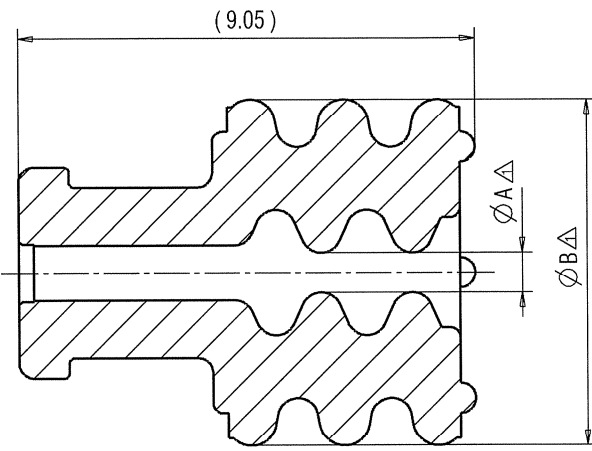
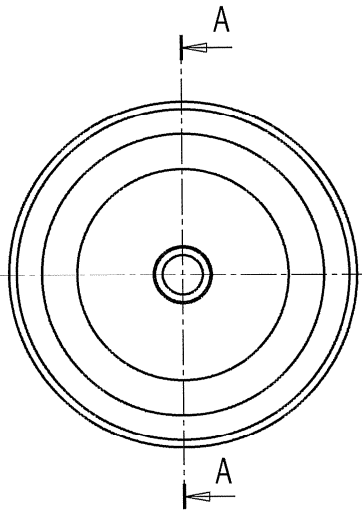
3

- NOTES:  
 △1. MATERIAL: SEE TABLE;  
 △2. COLOR: SEE TABLE;  
 3. APPLICABLE TERMINALS: 7114-4150-02, ETC.,  
 7116-4150-02, ETC.;  
 4. APPLICABLE FOR CONNECTOR CAVITY DIAMETER 6.10 mm;  
 5. RUBBER PARTS GENERAL TOLERANCE ±0.2 mm;  
 △6. THE MATERIALS USED IN THIS PRODUCT ARE IN CONFORMITY WITH REQUIREMENTS OF EU ELV 2000/53/EC DIRECTIVE AND ASSOCIATED DOCUMENTS.

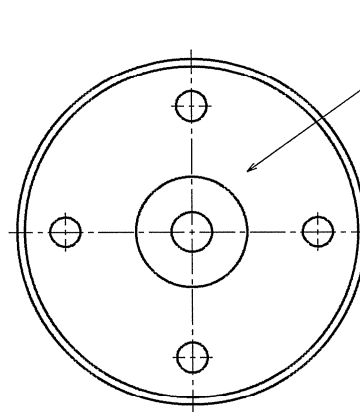
PART NUMBER	MATERIAL	COLOUR	A △ [mm]	B △ [mm]	WIRE OUTER DIAMETER RANGE [mm]	WEIGHT △ [g]
7158-3111-60	SELF LUBRICANT SILICONE RUBBER	GREEN	φ 0.80	φ 6.90	1.2 ~ 1.9	0.191
7158-3112-70		YELLOW	φ 1.35		1.8 ~ 2.3	0.184
7158-3113-40		WHITE	φ 1.65		2.1 ~ 3.0	0.179
△ 7158-3110-40		LIGHT GRAY	φ 2.80	φ 6.70	3.1 ~ 3.4	0.164
△ 7172-5197-80		BROWN	φ 3.20		3.4 ~ 3.8	0.120

B

B



SECTION A-A



MARKINGS ON THIS SIDE (CAVITY NO., MOLDING NO., YAZAKI MARK)

A

A

ISSUE MARK

CUSTOMER		CUSTOMER PART NO.		CUSTOMER DWG NO.		MATERIAL SPEC. SEE TABLE		TREAT. & FIN.							
△	20.9.2017.	CHANGED DRAWING & TABLE, ADD PART NUMBERS	Y17-0939	I.J.											
—	23.2.1999.	NEW	C99-E013	G.N.											
LET	DATE	REVISION RECORD	NO.	CHKD	OFFICE YEL-K	TRIAL PART NO.	NAME 2.8 SYSTEM SEALED CONNECTOR								
					VENDOR	7F9457-9338, etc.	WIRE SEAL								
GENERAL TOLERANCE					VENDOR NO.										
	10MAX	50MAX	100MAX	250MAX	250OVR	ANGLE	ECCENT	DWG TYPE	DWG SOURCE	DWG DATE	UNIT	SCL	ANGLE	PART NO.	
A	±0.15	±0.2	±0.3	±0.5	±0.75	±30'	0.1	R	NEW	22.2.1999.	mm	10/1	3	7158-3111-60, ETC.	
B	±0.2	±0.3	±0.55	±0.95	±1.4	±30'	0.1	APPROVED	CHECKED	CHECKED	DESIGN	DRAWN	DWG NO.	7158-3111-60: R	
C	±0.3	±0.5	±0.8	±1.4	±2	±30'	0.15	I. JAKOPIC	I. JAKOPIC	A. BUCEVIC	IWAHORI	M. SPRLJAN	SET DWG NO.		
SPECIFIED		MASS		SEE TABLE		2.09.2017.		21.09.2017.		21.09.2017.		21.5.1996.		20.9.2017.	



A3

1

2

3

