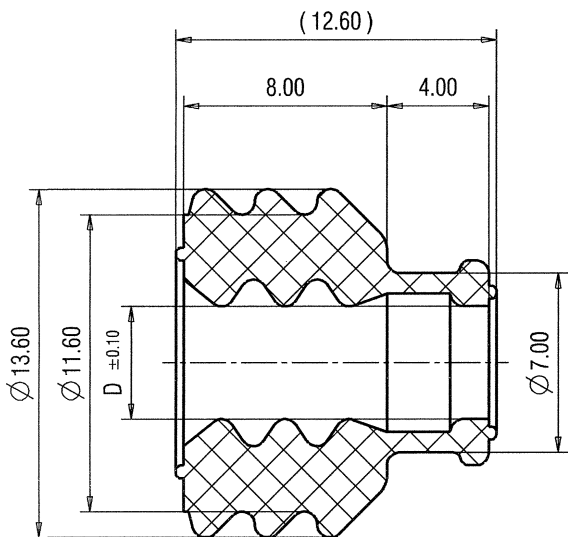


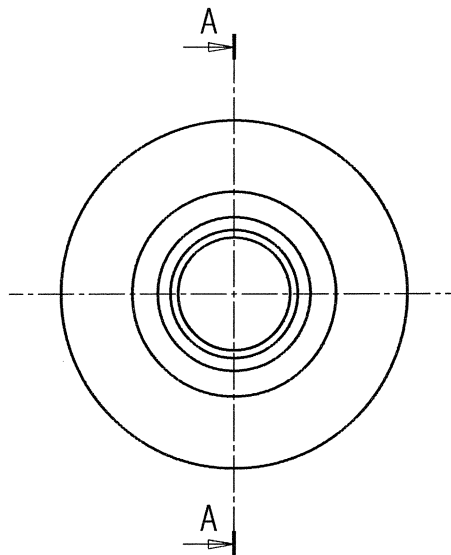
YAZAKI PART No.	WIRE SIZE	INSULATION DIAMETER	ΦD	MASS	MATERIAL	COLOR
7158-3034-50	4 mm <sup>2</sup>	3.4 - 4.4mm	2.50	1.064g	SILICON RUBBER	RED
7158-3035	6mm <sup>2</sup>	4.0 - 5.0mm	3.20	1.041g	SILICON RUBBER	NATURAL
7158-3036-70	10 mm <sup>2</sup>	△ 5.3 - 6.5mm	4.40	0.995g	SILICON RUBBER	YELLOW

△△ NOTES:

1. MATERIAL: SEE TABLE ;
2. COLOR: SEE TABLE ;
3. APPLICABLE TERMINALS: 7114-3250, ETC.  
7116-3250, ETC. ;
4. FOR GENERAL GEOMETRICAL TOLERANCE SEE TABLE (ECCENT= ECCENTRICITY) ;
5. HANDLING MANUAL: YPES-15-607 ;
6. PRODUCT STANDARD: YPES-11-04-087 ;
7. THE MATERIALS USED IN THIS PRODUCT ARE IN CONFORMITY WITH REQUIREMENTS OF EU ELV 2000/53/EC DIRECTIVE AND ASSOCIATED DOCUMENTS.



SECTION A-A



ISOMETRIC VIEW  
SCALE: 1:1

ISSUE MARK

DATE	REVISION RECORD	NO.	CHKD	VENDOR NO.	MATL. SPEC.	SEE NOTES	TREAT. & FIN.
20.11.2014	UPDATED TABLE	Y14-0636	B.F.	CUSTOMER			
12.03.2012	UPDATED NOTES	Y12-0224	J.J.	CUSTOMER PART NO.	CUSTOMER DWG NO.		
22.11.2010	UPDATED TABLE & NOTES	Y10-0024	J.J.				
23.09.2002	NEW	C02-D565	J.J.	OFFICE YEL-K	TRIAL PART NO.		
LET	DATE	REVISION RECORD	NO.	CHKD	VENDOR	X30257-D508	
GENERAL TOLERANCE				VENDOR NO.			
	10MAX	50MAX	100MAX	250MAX	2500VR	ANGLE	ECCENT
A	±0.15	±0.2	±0.3	±0.5	±0.75	±30'	0.1
B	±0.2	±0.3	±0.55	±0.95	±1.4	±30'	0.1
C	±0.3	±0.5	±0.8	±1.4	±2	±30'	0.15
SPECIFIED				MASS	SEE TABLE		
				T.SCHALLER	B.FRETZE	T.COTA	J.JELAK
				3.12.2014	05.12.2014	27.11.2014	17.07.2002
							20.11.2014
NAME					Y TYPE CONTACT SYSTEM		
NAME					SINGLE WIRE SEAL		
PART NO.					7158-3034-50 ETC.		
CH. CODE					7158-3034-50:R		
DWG NO.					7158-3034-50:R		
SET DWG NO.							

