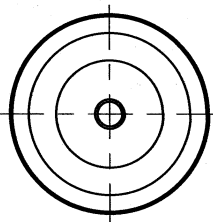
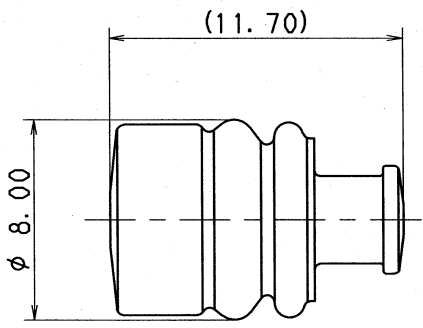


1

2

3

RUBBER PART GENERAL TOLERANCE			
PART DIM.	1	2	③
0 TO 3	± 0.2	± 0.3	± 0.4
3 TO 6	± 0.2	± 0.4	± 0.5
6 TO 10	± 0.3	± 0.5	± 0.6
10 TO 18	± 0.3	± 0.6	± 0.8
18 TO 30	± 0.4	± 0.8	± 1.0
30 TO 50	± 0.5	± 1.0	± 1.5
50 TO 80	± 0.6	± 1.2	± 2.0
80 TO 120	± 0.7	± 1.4	± 2.5
120 TO 180	± 0.8	± 1.6	± 3.0
180 TO 250	± 1.0	± 2.0	± 4.0
250 TO 315	± 1.2	± 2.5	± 5.0
315 TO 400	± 1.5	± 3.0	± 6.0
400 TO 500	± 1.8	± 3.5	± 7.0
500 OVER	± 0.4 %	± 0.8 %	± 1.5 %

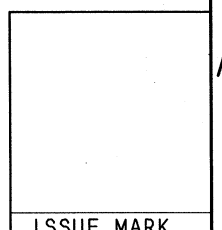


注

- △ 1) 適用電線サイズ: AVSS/CAVS 0.3~0.85  
: AVS 0.3  
: CHFUS 0.75

NOTE

- △ 1) APPLICABLE WIRE SIZE: AVSS/CAVS 0.3~0.85  
: AVS 0.3  
: CHFUS 0.75



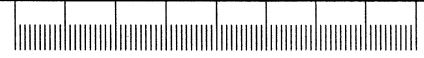
ISSUE MARK

					CUSTOMER					MATL. SILICONE RUBBER					TREAT. & FIN.				
					CUSTOMER PART NO.					CUSTOMER DWG NO.					SPEC. (DARK BLUE)				
△	05/01/27	CHANGED NOTE, ETC.			C05-Z155	H. T						NAME △ 4.8 (187) RUBBER STOPPER							
	95/11/02	NEW			C95-M403	K. O	OFFICE					TRIAL PART NO.							
LET	DATE	REVISION RECORD			NO.	CHKD	VENDOR					VENDOR NO.							
GENERAL TOLERANCE																			
	10MAX	50MAX	100MAX	250MAX	2500VR	ANGLE	ECCENT	DWG TYPE	DWG SOURCE	DWG DATE	UNIT	SCL	ANGLE	PART NO.					
A	±0.15	±0.2	±0.3	±0.5	±0.75	±30'	0.1	R	NEW	95/11/02	mm	5:1	3	7158-3014-90					
B	±0.2	±0.3	±0.55	±0.95	±1.4	±30'	0.1	APPROVED	CHECKED	CHECKED	DESIGN	DRAWN	DWG NO.	7158-3014-90:R					
C	±0.3	±0.5	±0.8	±1.4	±2	±30'	0.15				MAEDA	A. PACABIS	SET DWG NO.						
SPECIFIED							MASS	g			'05.01.28		94/09/27		05/01/27		YAZAKI CORPORATION		

1

2

3

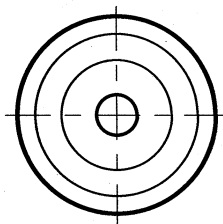
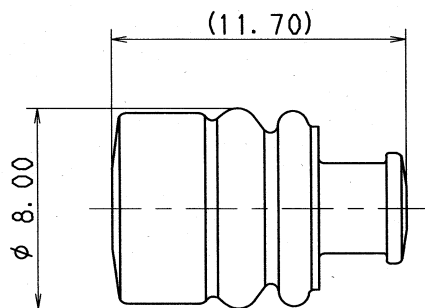


1

2

3

RUBBER PART GENERAL TOLERANCE				
PART DIM.	1	2	③	
0 TO 3	± 0.2	± 0.3	± 0.4	
3 TO 6	± 0.2	± 0.4	± 0.5	
6 TO 10	± 0.3	± 0.5	± 0.6	
10 TO 18	± 0.3	± 0.6	± 0.8	
18 TO 30	± 0.4	± 0.8	± 1.0	
30 TO 50	± 0.5	± 1.0	± 1.5	
50 TO 80	± 0.6	± 1.2	± 2.0	
80 TO 120	± 0.7	± 1.4	± 2.5	
120 TO 180	± 0.8	± 1.6	± 3.0	
180 TO 250	± 1.0	± 2.0	± 4.0	
250 TO 315	± 1.2	± 2.5	± 5.0	
315 TO 400	± 1.5	± 3.0	± 6.0	
400 TO 500	± 1.8	± 3.5	± 7.0	
500 OVER	± 0.4 %	± 0.8 %	± 1.5 %	



## 注記

- △ 1) 適用電線サイズ: CAVS 1.25  
 : AVSS 1.25~2  
 : AVS 0.5~1.25  
 : HFSS 2

## NOTE

- △ 1) APPLICABLE WIRE SIZE: CAVS 1.25  
 : AVSS 1.25~2  
 : AVS 0.5~1.25  
 : HFSS 2

ISSUE MARK

				CUSTOMER		MATL. SILICONE RUBBER		TREAT.	
				CUSTOMER PART NO.		CUSTOMER DWG NO.		SPEC. (DARK GRAY) & FIN.	
△	05/01/27	CHANGED NOTE, ETC.		C05-Z155	H. T	NAME △ 4.8 (187) RUBBER STOPPER			
	95/08/24	NEW		C95-M259	K. O	OFFICE		TRIAL PART NO.	
LET	DATE	REVISION RECORD		NO.	CHKD	VENDOR		VENDOR NO.	
GENERAL TOLERANCE									
	10MAX	50MAX	100MAX	250MAX	250OVR	ANGLE	ECCENT	DWG TYPE	DWG SOURCE
A	±0.15	±0.2	±0.3	±0.5	±0.75	±30'	0.1	R	NEW
B	±0.2	±0.3	±0.55	±0.95	±1.4	±30'	0.1	APPROVED	CHECKED
C	±0.3	±0.5	±0.8	±1.4	±2	±30'	0.15	CHECKED	CHECKED
SPECIFIED							MASS	g	05.01.28
								DESIGN	DRAWN
								MAEDA	A. PACABIS
								94/09/27	05/01/27
								PART NO. 7158-3015-10	
								CH. CODE 7158-3015-10	
								DWG NO. 7158-3015-10:R	
								SET DWG NO.	
YAZAKI CORPORATION									

1

2

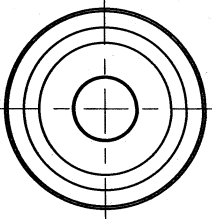
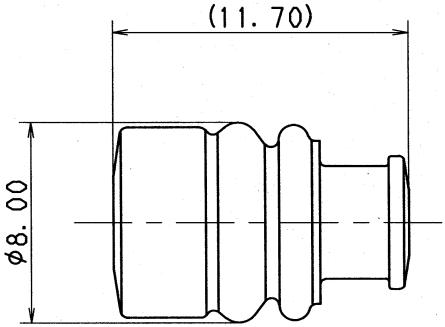
3

1

2

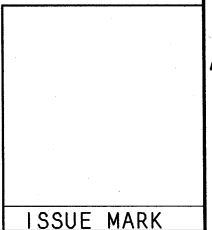
3

RUBBER PART GENERAL TOLERANCE				
PART DIM.	1	2	③	
0 TO 3	± 0.2	± 0.3	± 0.4	
3 TO 6	± 0.2	± 0.4	± 0.5	
6 TO 10	± 0.3	± 0.5	± 0.6	
10 TO 18	± 0.3	± 0.6	± 0.8	
18 TO 30	± 0.4	± 0.8	± 1.0	
30 TO 50	± 0.5	± 1.0	± 1.5	
50 TO 80	± 0.6	± 1.2	± 2.0	
80 TO 120	± 0.7	± 1.4	± 2.5	
120 TO 180	± 0.8	± 1.6	± 3.0	
180 TO 250	± 1.0	± 2.0	± 4.0	
250 TO 315	± 1.2	± 2.5	± 5.0	
315 TO 400	± 1.5	± 3.0	± 6.0	
400 TO 500	± 1.8	± 3.5	± 7.0	
500 OVER	± 0.4 %	± 0.8 %	± 1.5 %	



△ 注記  
1) 適用電線サイズ: AVS 2

△ NOTE  
1) APPLICABLE WIRE SIZE: AVS 2



ISSUE MARK

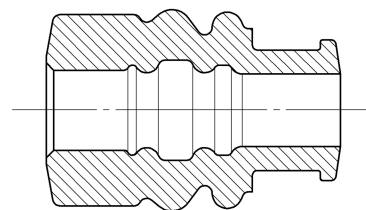
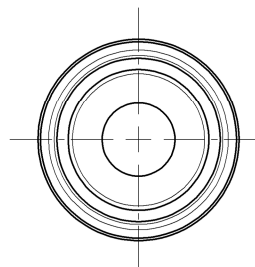
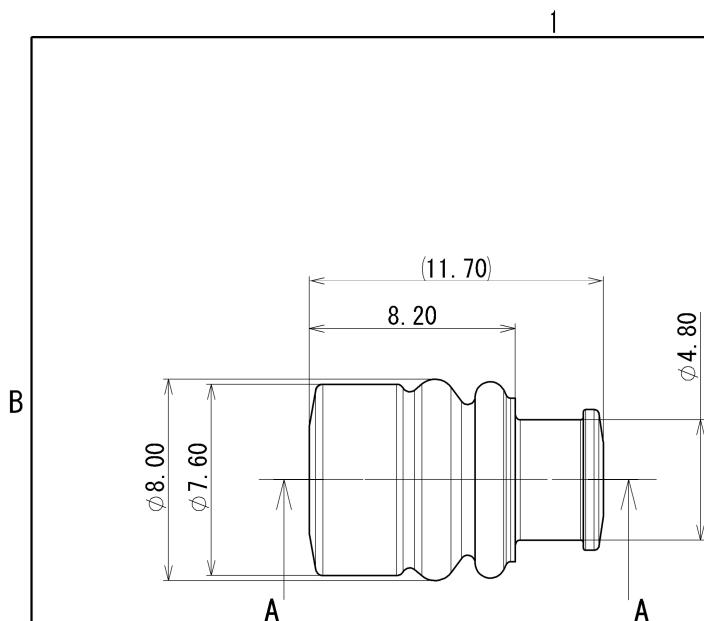
		CUSTOMER				MATL. SILICONE RUBBER				TREAT.					
		CUSTOMER PART NO.				CUSTOMER DWG NO.				SPEC. (DARK BROWN) & FIN.					
△	05/01/27	CHANGED NOTE, ETC.		C05-Z155	H. T	NAME △ 4.8 (187) RUBBER STOPPER									
	95/11/24	NEW		C95-M971	M. T	OFFICE				TRIAL PART NO.					
LET	DATE	REVISION RECORD		NO.	CHKD	VENDOR				VENDOR NO.					
GENERAL TOLERANCE															
	10MAX	50MAX	100MAX	250MAX	250OVR	ANGLE	ECCENT	DWG TYPE	DWG SOURCE	DWG DATE	UNIT	SCL	ANGLE	PART NO.	7158-3016-80
A	±0.15	±0.2	±0.3	±0.5	±0.75	±30'	0.1	R	NEW	95/11/24	mm	5:1	3	CH. CODE	7158-3016-80
B	±0.2	±0.3	±0.55	±0.95	±1.4	±30'	0.1	APPROVED	CHECKED	CHECKED	DESIGN	DRAWN	DWG NO.	7158-3016-80:R	SET DWG NO.
C	±0.3	±0.5	±0.8	±1.4	±2	±30'	0.15			MAEDA	A. PACABIS		YAZAKI CORPORATION		
SPECIFIED					MASS	g		05.01.28		94/09/27	05/01/27				

1

2

3





SEC. A-A

RUBBER PART		GENERAL TOLERANCE		
PART DIM.		1	2	③
0 TO 3		±0.2	±0.3	±0.4
3 TO 6		±0.2	±0.4	±0.5
6 TO 10		±0.3	±0.5	±0.6
10 TO 18		±0.3	±0.6	±0.8
18 TO 30		±0.4	±0.8	±1.0
30 TO 50		±0.5	±1.0	±1.5
50 TO 80		±0.6	±1.2	±2.0
80 TO 120		±0.7	±1.4	±2.5
120 TO 180		±0.8	±1.6	±3.0
180 TO 250		±1.0	±2.0	±4.0
250 TO 315		±1.2	±2.5	±5.0
315 TO 400		±1.5	±3.0	±6.0
400 TO 500		±1.8	±3.5	±7.0
500 OVER		±0.4 %	±0.8 %	±1.5 %

注記

1. 適用電線サイズ : AVS/AVX/HF 3.0

NOTE

1. APPLICABLE WIRE SIZE : AVS/AVX/HF 3.0

ISSUE MARK

△	2018/09/28	CHANGED NOTES, ETC.	C18-P258	Y. M	CUSTOMER				MATL. SILICONE RUBBER		TREAT.	
△	2007/05/07	CHANGED NOTES, ETC.	C07-Z340	T. H	CUSTOMER PART NO.				SPEC. (BLACK)		& FIN.	
	1995/08/24	NEW	C95-M259	K. O	CUSTOMER DWG NO.				NAME △ 4.8 RUBBER STOPPER (LL SIZE)			
LET	DATE	REVISION RECORD	NO.	CHKD	OFFICE				TRIAL PART NO. or PRODUCT NO.			
					VENDOR							
					VENDOR NO.							
GENERAL TOLERANCE					DWG TYPE	DWG SOURCE	DWG DATE	UNIT	SCL	ANGLE	PART NO.	
A	±0.15	±0.2	±0.3	±0.5	R	NEW	1995/08/03	mm	5:1	3	7158-3017	
B	±0.2	±0.3	±0.55	±0.95	APPROVED	CHECKED	CHECKED	DESIGN	DRAWN		DWG NO.	7158-3017:R
C	±0.3	±0.5	±0.8	±1.4	N. TAGUCHI	K. FUKUDA		MAEDA	Y. MAEDA		SET DWG NO.	
SPECIFIED					MASS					YAZAKI Corporation		
					△ (0.4) g	2018/09/28	2018/09/28		1994/09/27	2018/09/28	A3	