

SEC. A-A

RUBBER PART GENERAL TOLERANCE			
PART DIM.	1	2	③
0 TO 3	± 0.2	± 0.3	± 0.4
3 TO 6	± 0.2	± 0.4	± 0.5
6 TO 10	± 0.3	± 0.5	± 0.6
10 TO 18	± 0.3	± 0.6	± 0.8
18 TO 30	± 0.4	± 0.8	± 1.0
30 TO 50	± 0.5	± 1.0	± 1.5
50 TO 80	± 0.6	± 1.2	± 2.0
80 TO 120	± 0.7	± 1.4	± 2.5
120 TO 180	± 0.8	± 1.6	± 3.0
180 TO 250	± 1.0	± 2.0	± 4.0
250 TO 315	± 1.2	± 2.5	± 5.0
315 TO 400	± 1.5	± 3.0	± 6.0
400 TO 500	± 1.8	± 3.5	± 7.0
500 OVER	± 0.4 %	± 0.8 %	± 1.5 %

NOTE

1. APPLICABLE WIRE SIZE : NOMINAL DIAMETER OF FINISHED CABLE ø1.40~ø1.80  
 (EXCEPT ø.3mm<sup>2</sup> WIRE:WHICH STANDARD OUTER DIAMETER IS MORE AND EQUAL THAN ø1.8)

注記

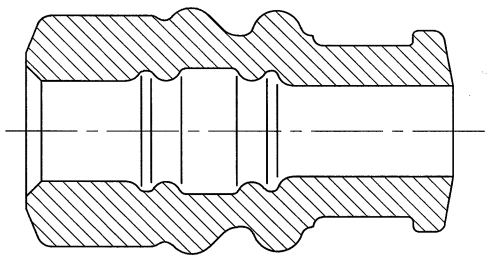
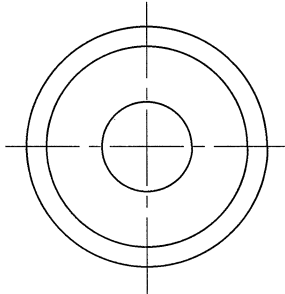
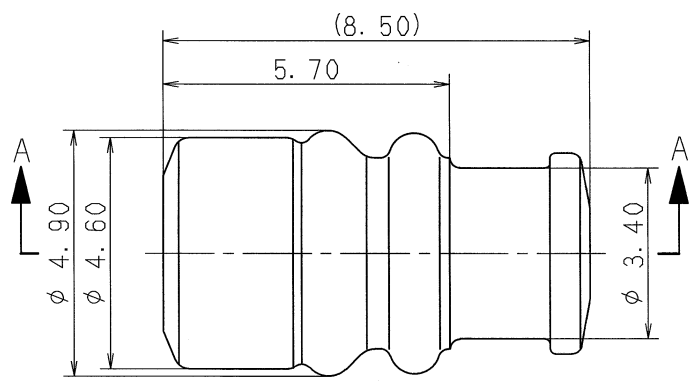
1. 適用電線サイズ : 標準仕上り外径 ø1.40~ø1.80とする。  
 (呼びø.3mm<sup>2</sup>で標準仕上り外径ø1.8以上は除く)

ISSUE MARK

95.11.02		NEW		C95-M403	K.O	CUSTOMER PART NO.		CUSTOMER DWG NO.		MATL. SILICONE RUBBER		TREAT. & FIN.			
LET	DATE	REVISION RECORD		NO.	CHKD	OFFICE		TRIAL PART NO.		NAME 090 II 5mm pitch RUBBER					
GENERAL TOLERANCE						VENDOR		VENDOR NO.		STOPPER (S SIZE)					
	10MAX	50MAX	100MAX	250MAX	250OVR	ANGLE	ECCENT	DWG TYPE	DWG SOURCE	DWG DATE	UNIT	SCL	ANGLE		
A	±0.15	±0.2	±0.3	±0.5	±0.75	±30'	0.1	R	NEW	95.11.02	mm	10/1	3		
B	±0.2	±0.3	±0.55	±0.95	±1.4	±30'	0.1	APPROVED	CHECKED	CHECKED	DESIGN	DRAWN			
C	±0.3	±0.5	±0.8	±1.4	±2	±30'	0.15	MAEDA		SAMUKAWA		PART NO. 7158-3003-90			
SPECIFIED						MASS		95.11.13		95.11.09	95.11.08	94.09.27	95.11.02	CH. CODE 7158-3003-90:R	
						g		95.11.13		95.11.09	95.11.08	94.09.27	95.11.02	DWG NO. 7158-3003-90:R	
								手書 稲葉 尚 鈴木		MAEDA		SAMUKAWA		YAZAKI CORPORATION	



RUBBER PART GENERAL TOLERANCE				
PART DIM.	1	2	(3)	
0 TO 3	± 0.2	± 0.3	± 0.4	
3 TO 6	± 0.2	± 0.4	± 0.5	
6 TO 10	± 0.3	± 0.5	± 0.6	
10 TO 18	± 0.3	± 0.6	± 0.8	
18 TO 30	± 0.4	± 0.8	± 1.0	
30 TO 50	± 0.5	± 1.0	± 1.5	
50 TO 80	± 0.6	± 1.2	± 2.0	
80 TO 120	± 0.7	± 1.4	± 2.5	
120 TO 180	± 0.8	± 1.6	± 3.0	
180 TO 250	± 1.0	± 2.0	± 4.0	
250 TO 315	± 1.2	± 2.5	± 5.0	
315 TO 400	± 1.5	± 3.0	± 6.0	
400 TO 500	± 1.8	± 3.5	± 7.0	
500 OVER	± 0.4 %	± 0.8 %	± 1.5 %	



SEC. A-A

注記

△ 1. 通用電線サイズ : 標準仕上り外径φ2.50~φ2.70とする。

NOTE

△ 1. APPLICABLE WIRE SIZE : NOMINAL DIAMETER OF FINISHED CABLE φ2.50~φ2.70.

ISSUE MARK

					CUSTOMER					MATL. SILICONE RUBBER			TREAT. & FIN.							
					CUSTOMER PART NO.					SPEC. (BROWN)										
△	03.06.03	CHANGED NOTES	C03-X350	H.T						NAME △2.3II(090II) 5mm pitch RUBBER										
	95.10.23	NEW	C95-M403	K.O						STOPPER (L SIZE)										
LET	DATE	REVISION RECORD	NO.	CHKD	VENDOR NO.					PART NO. 7158-3005-80										
GENERAL TOLERANCE					DWG TYPE					DWG SOURCE			DWG DATE		UNIT		SCL		ANGLE	
	10MAX	50MAX	100MAX	250MAX	250OVR	ANGLE	ECCENT	R	NEW	95.10.23	mm	10/1	3	CH. CODE		DWG NO. 7158-3005-80:R		SET DWG NO.		
A	±0.15	±0.2	±0.3	±0.5	±0.75	±30'	0.1	APPROVED	CHECKED	CHECKED	DESIGN	DRAWN	MAEDA		Y. OHKUBO					
B	±0.2	±0.3	±0.55	±0.95	±1.4	±30'	0.1			94.09.27		03.06.03		YAZAKI CORPORATION						
C	±0.3	±0.5	±0.8	±1.4	±2	±30'	0.15													
SPECIFIED					MASS					g										

