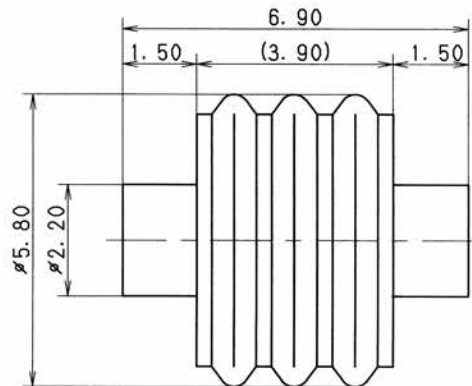
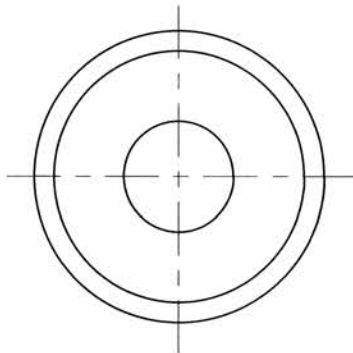


RUBBER PART GENERAL TOLERANCE				
PART DIM.	1	2	(3)	
0 TO 3	± 0.2	± 0.3	± 0.4	
3 TO 6	± 0.2	± 0.4	± 0.5	
6 TO 10	± 0.3	± 0.5	± 0.6	
10 TO 18	± 0.3	± 0.6	± 0.8	
18 TO 30	± 0.4	± 0.8	± 1.0	
30 TO 50	± 0.5	± 1.0	± 1.5	
50 TO 80	± 0.6	± 1.2	± 2.0	
80 TO 120	± 0.7	± 1.4	± 2.5	
120 TO 180	± 0.8	± 1.6	± 3.0	
180 TO 250	± 1.0	± 2.0	± 4.0	
250 TO 315	± 1.2	± 2.5	± 5.0	
315 TO 400	± 1.5	± 3.0	± 6.0	
400 TO 500	± 1.8	± 3.5	± 7.0	
500 OVER	± 0.4 %	± 0.8 %	± 1.5 %	



注記

1) 本製品は、SWPコネクタのメクラ栓として使用する。

NOTE

1) THIS PRODUCT IS USED AS A DUMMY PLUG OF SWP CONNECTOR.

ISSUE MARK

				CUSTOMER				MATERIAL SPEC.				TREAT. & FIN.		
06/06/23				C06-2706				SELF-LUBRICATING SILICONE RUBBER						
ADDED GENERAL TOLERANCE, ETC.				E. S										
87/04/08				7MC-0173										
NEW				M. K										
REVISION RECORD				OFFICE				NAME				SWP-TYPE CONNECTOR		
NO.				VENDOR				TRIAL PART NO.						
CHKD				VENDOR NO.										
GENERAL TOLERANCE														
10MAX	50MAX	100MAX	250MAX	2500VR	ANGLE	ECCENT	DWG TYPE	DWG SOURCE	DWG DATE	UNIT	SCL	ANGLE	PART NO.	
A	±0.15	±0.2	±0.3	±0.5	±30'	0.1	R	NEW	87/04/08	mm	10:1	3	7157-3755-60	
B	±0.2	±0.3	±0.55	±0.95	±30'	0.1	APPROVED	CHECKED	CHECKED	DESIGN	DRAWN		7157-3755-60:R	SET DWG NO.
C	±0.3	±0.5	±0.8	±1.4	±30'	0.15				YAMADA	C. AGCAOILI			
SPECIFIED						MASS					YAZAKI CORPORATION			
						g								

1

2

3