

- ※
- 1. 品番 : 7114-3251
 - 7116-3251
 - 2. 仕様 : φ2.5 × φ3.5

NOTES

- 1. APPLICABLE TERMINAL NO.
: 7114-3251, 7116-3251
- 2. OUTER DIMENSION OF APPLICABLE WIRE
: φ2.5 × φ3.5

SEC. A-A

CUSTOMER		CUSTOMER PART NO.		CUSTOMER DWG NO.	
91.04.15		NEW		C91-1316 T.M. OFFICE	
LET. DATE		REVISION RECORD		CHKD. VENDOR	
GENERAL TOLERANCE		VENDOR NO.		STDLIB NO.	
1. MAX. SQMAX. 100MAX. 25MAX. 50MAX. 100		ANGLE. ECCENT. DNG. TYPE. DNG. SOURCE. DNG. DATE. UNIT. SQ. ANGLE. PART NO.		7157-3582-90	
A. φ0.15	φ0.2	φ0.3	φ0.5	φ0.75	φ30° 0.1
B. φ0.2	φ0.3	φ0.55	φ0.95	φ1.4	φ30° 0.1
φ0.3	φ0.5	φ0.8	φ1.4	φ2	φ30° 0.15
SPECIFIED		WEIGHT		1	
91.04.15		91.04.15		91.04.15	
河野		A.S.S.		KUSUNOKI T. MAKITA	
91.04.15		91.04.15		91.04.15	
YAZAKI CORPORATION		YAZAKI CORPORATION		YAZAKI CORPORATION	

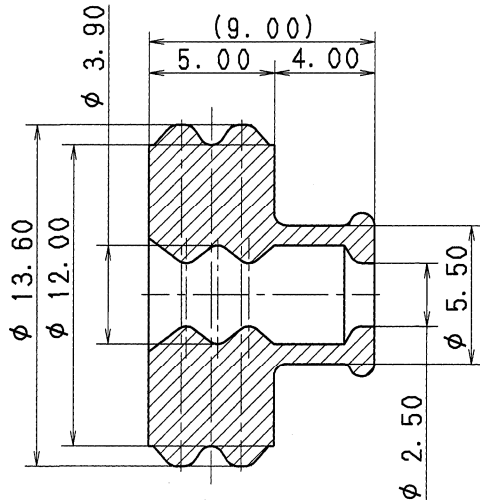
注記

- △ 1. 適用ターミナル品番 : 7114-3251 (AV 3, AVS 3, AVS 3f), 7114-3250 (AVS 5),
7116-3251 (AV 3, AVS 3, AVS 3f), 7116-3250 (AVS 5)
- △ 2. 適用電線サイズ : AV 3, AVS 3, AVS 3f, AVS 5

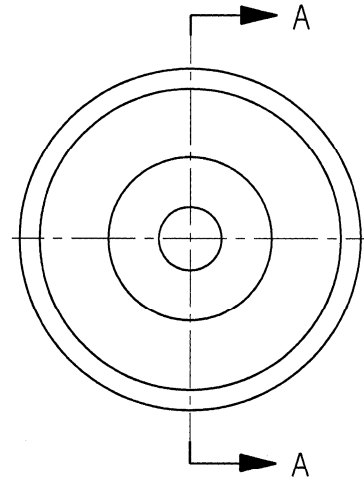
△ NOTES

- 1. APPLICABLE TERMINAL NO. : 7114-3251 (AV 3, AVS 3, AVS 3f), 7114-3250 (AVS 5),
7116-3251 (AV 3, AVS 3, AVS 3f), 7116-3250 (AVS 5)
- 2. APPLICABLE WIRE SIZE : AV 3, AVS 3, AVS 3f, AVS 5

RUBBER PART GENERAL TOLERANCE				
PART DIM.	1	2	③	
0 TO 3	± 0.2	± 0.3	± 0.4	
3 TO 6	± 0.2	± 0.4	± 0.5	
6 TO 10	± 0.3	± 0.5	± 0.6	
10 TO 18	± 0.3	± 0.6	± 0.8	
18 TO 30	± 0.4	± 0.8	± 1.0	
30 TO 50	± 0.5	± 1.0	± 1.5	
50 TO 80	± 0.6	± 1.2	± 2.0	
80 TO 120	± 0.7	± 1.4	± 2.5	
120 TO 180	± 0.8	± 1.6	± 3.0	
180 TO 250	± 1.0	± 2.0	± 4.0	
250 TO 315	± 1.2	± 2.5	± 5.0	
315 TO 400	± 1.5	± 3.0	± 6.0	
400 TO 500	± 1.8	± 3.5	± 7.0	
500 OVER	± 0.4 %	± 0.8 %	± 1.5 %	



SEC. A-A



ISSUE MARK

2016/08/04		CHANGED NOTES, ETC.	C16-Z607	A. Q	CUSTOMER	MATERIAL SILICONE RUBBER		TREAT.						
1988/12/06		CHANGED PART NAME & NOTES	8MC-1627	山本浩	CUSTOMER PART NO.	SPEC. (GREEN)		& FIN.						
1987/04/27		NEW	7MC-4070	楠	CUSTOMER DWG NO.	NAME △Y-TYPE SEAL RUBBER								
LET	DATE	REVISION RECORD	NO.	CHKD	OFFICE	TRIAL PART NO.	-----							
					VENDOR	087657-4099	-----							
GENERAL TOLERANCE					VENDOR NO.									
	10MAX	50MAX	100MAX	250MAX	2500VR	ANGLE	ECCENT	DWG TYPE	DWG SOURCE	DWG DATE	UNIT	SCL	ANGLE	PART NO.
A	±0.15	±0.2	±0.3	±0.5	±0.75	±30'	0.1	R	NEW	1987/04/27	mm	5:1	3	7157-3580-60
B	±0.2	±0.3	±0.55	±0.95	±1.4	±30'	0.1	APPROVED	CHECKED	CHECKED	DESIGN	DRAWN		CH. CODE
C	±0.3	±0.5	±0.8	±1.4	±2	±30'	0.15							7157-3580-60:R
SPECIFIED					MASS	g	M. NAKAMURA		KUSUNOKI A. QUIROL		DWG NO. SET DWG NO.			
							2016/08/04		1987/02/03		2016/08/04		YAZAKI CORPORATION	

1

2

3

注記

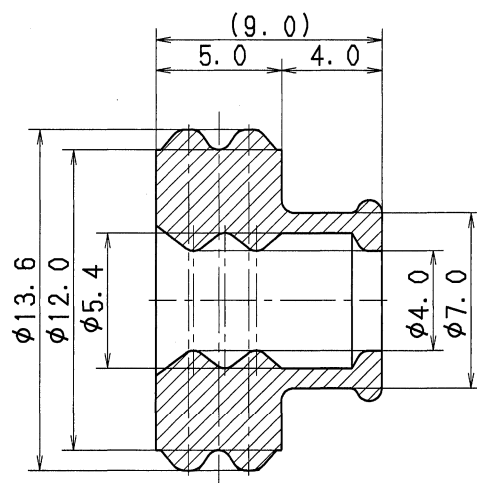
1. 通用ターミナル品番 : 7114-3250,
7116-3250

△2. 適用電線サイズ : AV 5, AV 8

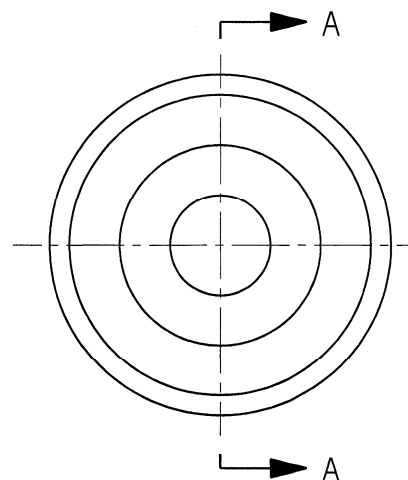
△NOTES

1. APPLICABLE TERMINAL NO. : 7114-3250,
7116-3250

△2. APPLICABLE WIRE SIZE : AV 5, AV 8



SEC. A-A



ISSUE MARK

△	2016/08/04	CHANGED NOTES, ETC.	C16-Z607	A. Q	CUSTOMER	MATL.	SILICONE RUBBER	TREAT.							
△	2016/02/01	ADDED NOTES, ETC.	C16-Z100	A. Q	CUSTOMER PART NO.	SPEC.	(RED IRON)	& FIN.							
	1987/04/27	NEW	7MC-4010	楠	CUSTOMER DWG NO.	NAME	△Y TYPE SEAL RUBBER (5 8Sq)								
LET	DATE	REVISION RECORD	NO.	CHKD	VENDOR	087657-4100									
GENERAL TOLERANCE					VENDOR NO.										
	10MAX	50MAX	100MAX	250MAX	2500VR	ANGLE	ECCENT	DWG TYPE	DWG SOURCE	DWG DATE	UNIT	SCL	ANGLE	PART NO.	7157-3581-80
A	±0.15	±0.2	±0.3	±0.5	±0.75	±30'	0.1	R	NEW	1987/04/27	mm	5:1	3	CH. CODE	
B	±0.2	±0.3	±0.55	±0.95	±1.4	±30'	0.1	APPROVED	CHECKED	CHECKED	DESIGN	DRAWN	DWG NO.	7157-3581-80:R	SET DWG NO.
◎	±0.3	±0.5	±0.8	±1.4	±2	±30'	0.15	M. NAKAMURA			KUSUNOKI	A. QUIROL	YAZAKI CORPORATION		
SPECIFIED					MASS	g	2016/08/04			1987/02/03	2016/08/04				

1

2

3