

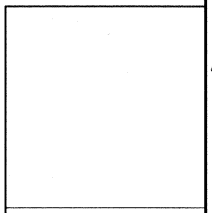
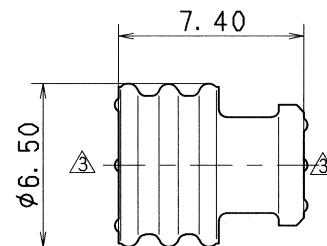
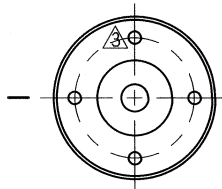
注記

- 1. 適用電線サイズ : CAVUS 0.85~1.25  $\Delta$   
                           : CAVS 0.3~0.85  $\Delta$   
                           : AVS 0.3  $\Delta$
- 2. 材料は含油シリコンゴム(緑)
- 3. 適用端子品番 : 7114-1232, 7116-1236  
                           7116-1232, 7116-1246

NOTES

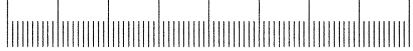
- 1. APPLICABLE WIRE SIZE : CAVUS 0.85~1.25  $\Delta$   
   : CAVS 0.3~0.85  $\Delta$   
   : AVS 0.3  $\Delta$
- 2. MATERIAL: SELF-LUBRICATION SILICONE RUBBER (GREEN)
- 3. APPLICABLE TERMINAL PART NO. : 7114-1232, 7116-1236  
   7116-1232, 7116-1246

RUBBER PART GENERAL TOLERANCE			
PART DIM.	1	2	③
0 TO 3	± 0.2	± 0.3	± 0.4
3 TO 6	± 0.2	± 0.4	± 0.5
6 TO 10	± 0.3	± 0.5	± 0.6
10 TO 18	± 0.3	± 0.6	± 0.8
18 TO 30	± 0.4	± 0.8	± 1.0
30 TO 50	± 0.5	± 1.0	± 1.5
50 TO 80	± 0.6	± 1.2	± 2.0
80 TO 120	± 0.7	± 1.4	± 2.5
120 TO 180	± 0.8	± 1.6	± 3.0
180 TO 250	± 1.0	± 2.0	± 4.0
250 TO 315	± 1.2	± 2.5	± 5.0
315 TO 400	± 1.5	± 3.0	± 6.0
400 TO 500	± 1.8	± 3.5	± 7.0
500 OVER	± 0.4 %	± 0.8 %	± 1.5 %

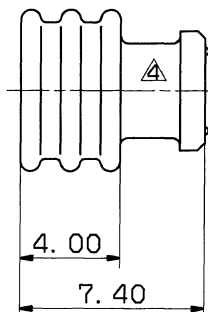
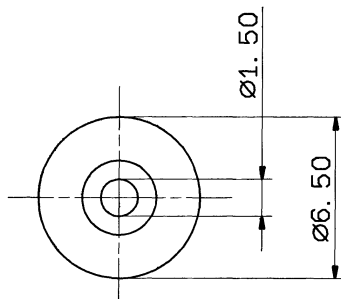


ISSUE MARK

06/06/28		CHANGED FORM	C06-Z727	M. A	CUSTOMER		MATT. SPEC.		SEE NOTES		TREAT. & FIN.		
93/12/08		CHANGED APPLICABLE WIRE SIZE	C93-7153	M. K	CUSTOMER PART NO.		CUSTOMER DWG NO.		NAME		W TYPE SEAL RUBBER		
91/05/06		RENEW	C91-L183	M. K	OFFICE		TRIAL PART NO.		NAME		W TYPE SEAL RUBBER		
LET	DATE	REVISION RECORD	NO.	CHKD	VENDOR		VENDOR NO.		NAME		(FOR THIN WIRE)		
GENERAL TOLERANCE				ECCENT		DWG TYPE		DWG SOURCE		DWG DATE		UNIT	
	10MAX	50MAX	100MAX	250MAX	2500VR	ANGLE							
A	±0.15	±0.2	±0.3	±0.5	±0.75	±30'	0.1	R	RENEW	91/05/06	mm	5:1	3
B	±0.2	±0.3	±0.55	±0.95	±1.4	±30'	0.1	APPROVED	CHECKED	CHECKED	DESIGN	DRAWN	
C	±0.3	±0.5	±0.8	±1.4	±2	±30'	0.15				SAKAI	C. REPOLLO	
SPECIFIED				MASS		APPROVED		CHECKED		CHECKED		DWG NO.	
VD12005				g		66.6.29		66.06.29		66/06/29		7157-3563-60	
												7157-3563-60:R	
												SET DWG NO.	
												YAZAKI CORPORATION	
												85/01/16 06/06/28	



RUBBER PART GENERAL TOLERANCE			
PART DIM.	1	2	③
0 TO 3	± 0.2	± 0.3	± 0.4
3 TO 6	± 0.2	± 0.4	± 0.5
6 TO 10	± 0.3	± 0.5	± 0.6
10 TO 18	± 0.3	± 0.6	± 0.8
18 TO 30	± 0.4	± 0.8	± 1.0
30 TO 50	± 0.5	± 1.0	± 1.5
50 TO 80	± 0.6	± 1.2	± 2.0
80 TO 120	± 0.7	± 1.4	± 2.5
120 TO 180	± 0.8	± 1.6	± 3.0
180 TO 250	± 1.0	± 2.0	± 4.0
250 TO 315	± 1.2	± 2.5	± 5.0
315 TO 400	± 1.5	± 3.0	± 6.0
400 TO 500	± 1.8	± 3.5	± 7.0
500 OVER	± 0.4 %	± 0.8 %	± 1.5 %



注記

- 適用電線サイズ : CAVS 1.25  $\Delta$   
AV 0.5 ~ 0.85  $\Delta$   
AVS 0.5 ~ 1.25  $\Delta$
- 適用雄端子品番 : 7114-1232  
適用雌端子品番 : 7116-1232

$\Delta$  NOTES

- APPLICABLE WIRE SIZE : CAV 1.25  $\Delta$   
AV 0.5 ~ 0.85  $\Delta$   
AVS 0.5 ~ 1.25  $\Delta$
- APPLICABLE TERMINAL MALE NO. : 7114-1232  
APPLICABLE TERMINAL FEMALE NO. : 7116-1232

ISSUE MARK

$\Delta$ 93.12.08	CHANGED APPLICABLE WIRE SIZE	C93-7153	M. K	CUSTOMER	CUSTOMER PART NO.		CUSTOMER DWG NO.		MATL. SPEC.	SI RUBBER (BLACK)	TREAT. & FIN.						
$\Delta$ 89.07.12	RENEW AND ADD. SECTION AND CHANGED DRAWING	C89-L754	K. A	OFFICE	STDLIB NO.		VENDOR		NAME	RUBBER STOPPER FOR							
LET	DATE	REVISION RECORD	NO.	CHKD	VENDOR NO.		VENDOR NO.		$\Delta$	W-TYPE							
GENERAL TOLERANCE																	
	10MAX	50MAX	100MAX	250MAX	250OVR	ANGLE	ECCENT	DWG TYPE	DWG SOURCE	DWG DATE	UNIT	SCL	ANGLE	PART NO.	7157-3560		
A	±0.15	±0.2	±0.3	±0.5	±0.75	±30°	0.1	R	RENEW	83.06.17	mm	5/1	3	DWG NO.	7157-3560:R		
B	±0.2	±0.3	±0.55	±0.95	±1.4	±30°	0.1	APPROVED	CHECKED	CHECKED	DESIGN	DRAWN	TRIAL PART NO.				
C	±0.3	±0.5	±0.8	±1.4	±2	±30°	0.15	H. SAKAI		甲斐		YAZAKI CORPORATION					
SPECIFIED GENERAL TOLERANCE 3				WEIGHT				g		83.12.21		83.12.14		83.06.17		93.12.08	

