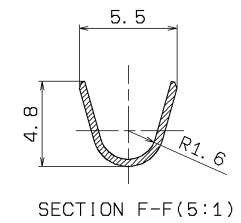
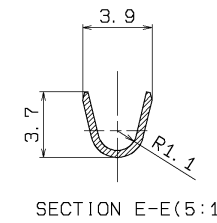
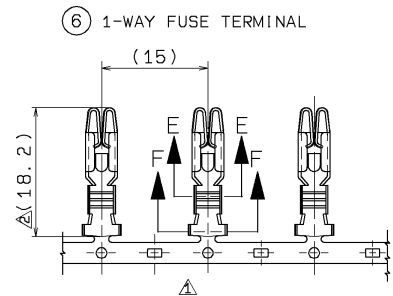
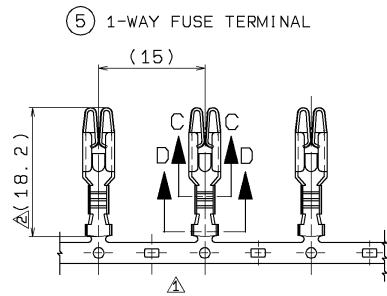
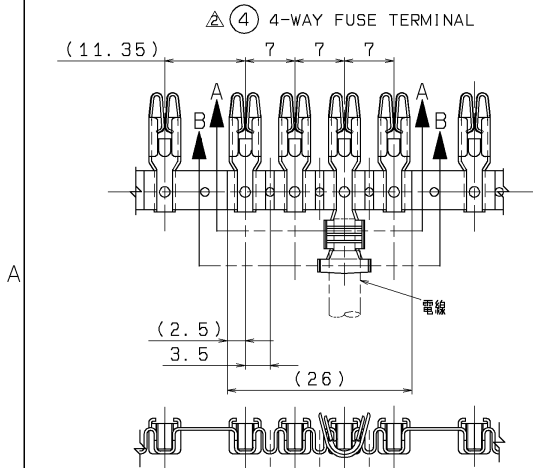
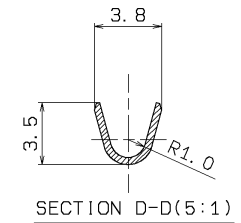
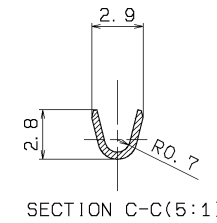
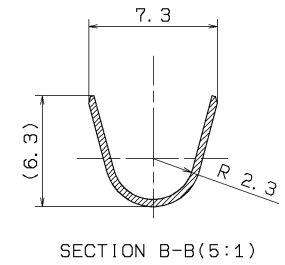
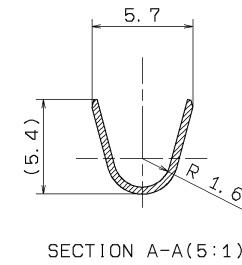
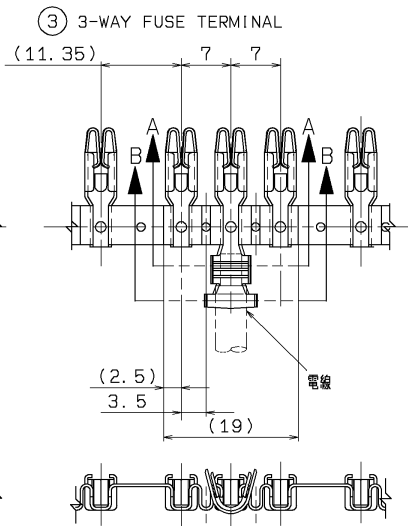
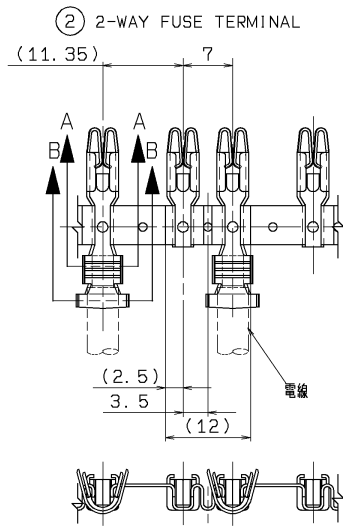
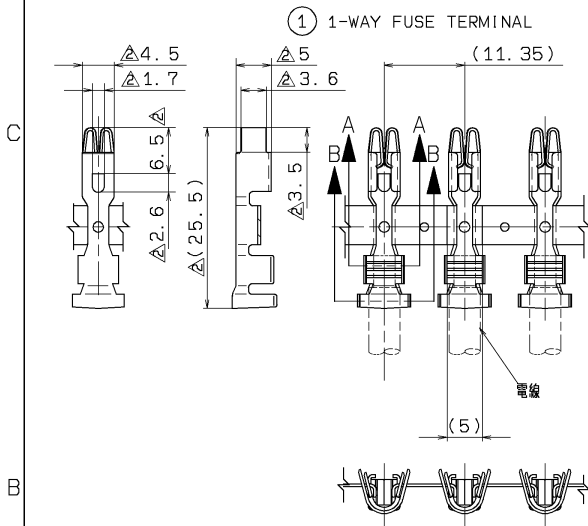


NO.	YAZAKI NO.	NAME	APPLICABLE WIRE SIZE	MASS
①	7126-8821-02	FUSE TERMINAL(1-WAY)	AVS 2~5sq	1.1g
②	7126-8822-02	FUSE TERMINAL(2-WAY)	AVS 2~5sq	2.0g
③	7126-8823-02	FUSE TERMINAL(3-WAY)	AVS 2~5sq	2.9g
④	7126-8824-02	FUSE TERMINAL(4-WAY)	AVS 2~5sq	3.8g
⑤	7126-8825-02	FUSE TERMINAL(1-WAY)	CAVS 0.3~AV 0.5sq	0.65g
⑥	7126-8826-02	FUSE TERMINAL(1-WAY)	CAVS 0.85~AV 2sq	0.7g



LET	DATE	REVISION RECORD	NO.	CHKD
△	98.06.15	ADD DIMENSION etc.	C98-0370	H. F
△	96.08.23	CORRECTION	C96-0531	H. F
	95.09.04	N E W	C95-0616	T. O

GENERAL TOLERANCE							
	10MAX	50MAX	100MAX	250MAX	250OV/R	ANGLE	
A	±0.15	±0.2	±0.3	±0.5	±0.75	±30'	
B	±0.2	±0.3	±0.55	±0.95	±1.4	±30'	
◎	±0.3	±0.5	±0.8	±1.4	±2	±30'	
	SPECIFIED					MASS	SEE TABLE g

CUSTOMER		MATERIAL		TREATMENT	
CUSTOMER PART NO.		COPPER ALLOY SPEC.		TIN PLATING & FIN.	
CUSTOMER DWG NO.		NAME		FUSE TERMINAL	
OFFICE		TRIAL PART NO.			
VENDOR		DESIGN		DRAWN	
VENDOR NO.		H. FURUYA		SET DWG NO.	
DWG TYPE	DWG SOURCE	DWG DATE	UNIT	SCL	ANGLE
R	N E W	95.09.04	mm	2:1	3
APPROVED	CHECKED	CHECKED	DESIGN	PART NO. 7126-8821-02ETC	
Y. MAEDA	Y. MAEDA	Y. MAEDA	Y. MAEDA	CH. CODE 7126-8821-02:R	
YAZAKI CORPORATION				DWG NO. 7126-8821-02:R	
98.06.15				98.06.15	