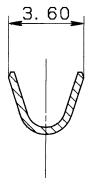
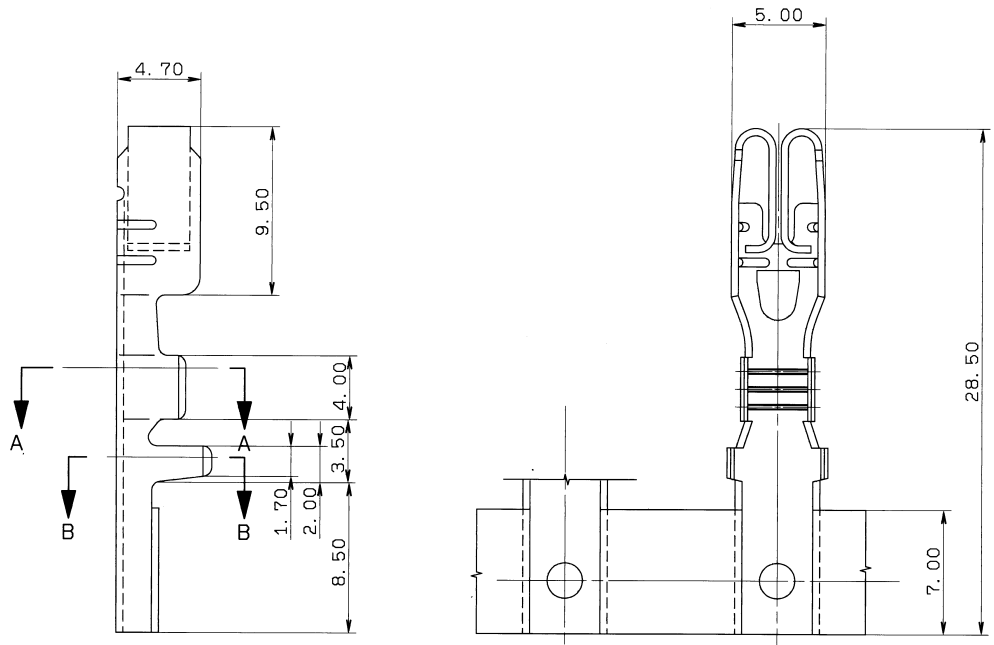
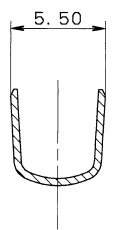


PART NO.
7126-8620
7B26-8620



SEC. A-A(5/1)



SEC. B-B(5/1)

NOTES
 1) UNLESS OTHERWISE SPECIFIED ALL CORNER TO BE MINIMUM PRESS RADIUS
 2) APPLICABLE WIRE SIZE AV0. 5~AV2
 3) THIS PART HAS TWO PART NO. S. ONE IS USED FOR GENERAL CIRCUITS AND THE OTHER IS USED FOR AIR BAG CIRCUITS. PART NO. S ARE AS FOLLOWS
 GENERAL CIRCUITS:7126-8620
 AIR BAG CIRCUITS:7B26-8620

注 記
 1) プレス直角曲げ部はプレス加工最小Rとする
 2) 電線サイズはAV0. 5~AV2である
 3) 本部品は一般回路使用時の品番とエアバック回路使用時の品番の2種類の品番をもち使い分けを下記に示す
 一般回路使用時の品番：7126-8620
 エアバック回路使用時の品番：7B26-8620

ISSUE MARK

CUSTOMER		MATERIAL SPEC.		TREATMENT	
CUSTOMER PART NO.		BSR T=0.4		TIN PLATE & FIN.	
CUSTOMER DWG NO.		NAME			
OFFICE		FUZE TERMINAL FEMALE			
VENDOR		(BLADE TYPE)			
VENDOR NO.		DWG TYPE		PART NO.	
		R NEW		7126-8620 ETC.	
		DWG DATE		DWG NO.	
		80.05.22		7126-8620:R	
		UNIT		YAZAKI CORPORATION	
		mm			
		SCL			
		5/1			
		ANGLE			
		3			
APPROVED		CHECKED		DESIGN	
DRAWN		DESIGN		DRAWN	
MATSUURA		MATSUURA		MATSUURA	
89.03.01		89.03.01		89.03.01	
80.05.22		80.05.22		80.05.22	

GENERAL TOLERANCE								
	10MAX	50MAX	100MAX	250MAX	2500VR	ANGLE	ECCENT	
A	±0.15	±0.2	±0.3	±0.5	±0.75	±30'	0.1	
B	±0.2	±0.3	±0.55	±0.95	±1.4	±30'	0.1	
©	±0.3	±0.5	±0.8	±1.4	±2	±30'	0.15	
SPECIFIED							WEIGHT	g

LET	DATE	REVISION RECORD	NO.	CHKD
89.02.27		NEW	C89-3303	T. S