

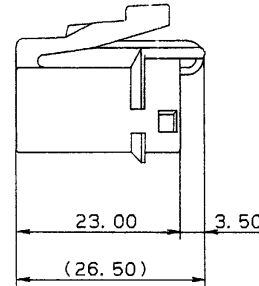
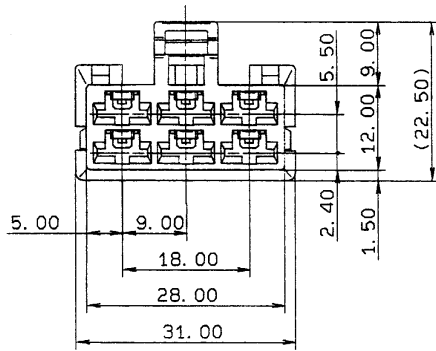
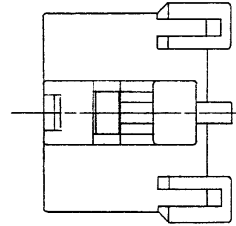
MARK	PART NO.	COLOR	MATING PART NO.
M06FW	7123-6060	NATURAL	7122-6060
M06FW-GY	7123-6060-40	GRAY	7122-6060-40

注 記

- 1) 適用端子品番: 7116-2870, 7116-2871, 7116-2872
 2) 適用リヤホルダ'品番: 7157-6260-30

NOTES

- 1) APPLICABLE TERMINAL NO. :
 7116-2870, 7116-2871, 7116-2872
 2) APPLICABLE REAR HOLDER NO. :
 7157-6260-30



LET	DATE	REVISION RECORD	NO.	CHKD
	88.12.12	NEW	BMC-3159	T.M

GENERAL TOLERANCE						
	10MAX	50MAX	100MAX	250MAX	2500VR	ANGLE
A	±0.15	±0.2	±0.3	±0.5	±0.75	±30'
B	±0.2	±0.3	±0.55	±0.95	±1.4	±30'
◎	±0.3	±0.5	±0.8	±1.4	±2	±30'

CUSTOMER		MATL. SPEC.	TREAT. & FIN.
CUSTOMER PART NO.	CUSTOMER DWG NO.	NYLON	
OFFICE	STDLIB NO.	NAME M TYPE CONNECTOR HOUSING	
VENDOR		6PF(W)	
VENDOR NO.		PART NO. 7123-6060 ETC.	
DWG TYPE	DWG SOURCE	DWG DATE	UNIT
R	NEW	88.11.19	mm
APPROVED	CHECKED	CHECKED	DESIGN
			SAKAI
			DRAWN
			S. YAGI
			DWG NO. 7123-6060-R
			TRIAL PART NO.
			YAZAKI CORPORATION

1

2

3

4

5