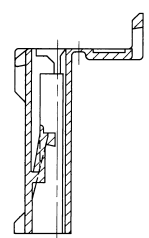


SEC. A-A



SEC. B-B

	YAZAKI NO.	REMARKS
①	7123-2655	P. P (NATURAL)
②	7123-2655-30	P. P (BLACK)
△③	7B23-2655	P. P (NATURAL)
△④	7B23-2655-30	P. P (BLACK)

NOTES

- 1) MUST BE FREE OF FLASH AND IMPERFECTIONS THAT AFFECT FUNCTION.
- △2) APPLICABLE TERMINAL : 7116-2640 ETC.

注記

- 1) 機能上有害なバリ, キレツ等なまこと。
- △2) 適用端子 : 7116-2640 ETC.

ISSUE MARK

LET	DATE	REVISION RECORD	NO.	CHKD
△	89.02.09	ADDED PART NO.	C89-5153	M. S
	88.08.26	NEW	C88-5759	Y. N

GENERAL TOLERANCE								
	10MAX	50MAX	100MAX	250MAX	2500VR	ANGLE	ECCENT	
A	±0.15	±0.2	±0.3	±0.5	±0.75	±30'	0.1	
B	±0.2	±0.3	±0.55	±0.95	±1.4	±30'	0.1	
◎	±0.3	±0.5	±0.8	±1.4	±2	±30'	0.15	
SPECIFIED							WEIGHT	3.50 g

CUSTOMER		MATERIAL		TREAT.	
CUSTOMER PART NO.	CUSTOMER DWG NO.	SEE TABLE	SPEC.	& FIN.	
		NAME 250 5P (F) J.C HOUSING			
OFFICE		STDLIB NO.			
VENDOR		VENDOR NO.			
DWG TYPE		DWG SOURCE	DWG DATE	UNIT	SCL ANGLE
R	NEW		88.08.26	mm	2/1 3
APPROVED	CHECKED	CHECKED	DESIGN	DRAWN	PART NO. 7123-2655 ETC.
Y. N	M. S	S. K	SAKA	SAKAGUCHI	DWG NO. 7123-2655:R TRIAL PART NO. 083123-5422
			GUCHI	Y. N	YAZAKI CORPORATION
			89.02.13	83.09.15	89.02.09