

1

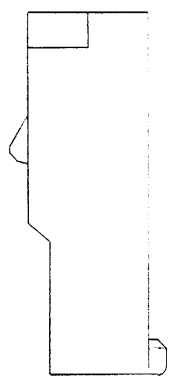
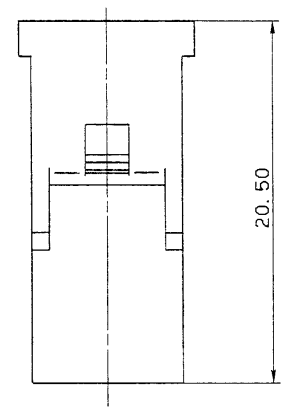
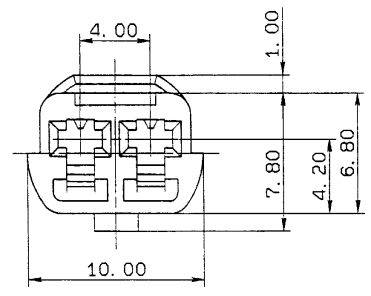
2

3

4

5

YAZAKI NO.	COLOR
7123-1520	NATURAL
7123-1520-30	BLACK
7123-1520-40	GRAY
7123-1520-50	ORANGE
7123-1520-60	GREEN
7123-1520-70	YELLOW
7123-1520-80	BROWN
7123-1520-90	BLUE

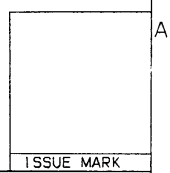


注記

1. 嵌合相手品番: 7122-1520 ETC.
2. 適用端子品番: 7116-1180, 7116-1181

NOTES

1. MATING PART NO. : 7122-1520 ETC.
2. APPLICABLE TERMINAL NO. : 7116-1180, 7116-1181



LET	DATE	REVISION RECORD	NO.	CHKD
	88.07.12	N E W	8MC-3021	S.Y

GENERAL TOLERANCE							
	10MAX	50MAX	100MAX	250MAX	2500VR	ANGLE	ECCENT
A	±0.15	±0.2	±0.3	±0.5	±0.75	±30'	0.1
B	±0.2	±0.3	±0.55	±0.95	±1.4	±30'	0.1
◎	±0.3	±0.5	±0.8	±1.4	±2	±30'	0.15

CUSTOMER		MATERIAL: NYLON		TREAT. & FIN.	
CUSTOMER PART NO.		CUSTOMER DWG NO.		SPEC.	
OFFICE		STDLIB NO.		NAME 2P 090 FEMALE HOUSING	
VENDOR		VENDOR NO.		PART NO. 7123-1520 ETC.	
DWG TYPE R		DWG SOURCE N E W		DWG DATE 88.06.28	
APPROVED		CHECKED		DESIGN DRAWN	
加藤 前島		KANAKO		S. YAGI	
SPECIFIED		WEIGHT g		DWG NO. 7123-1520.R	
				TRIAL PART NO.	
				YAZAKI CORPORATION	

1

2

3

4

5