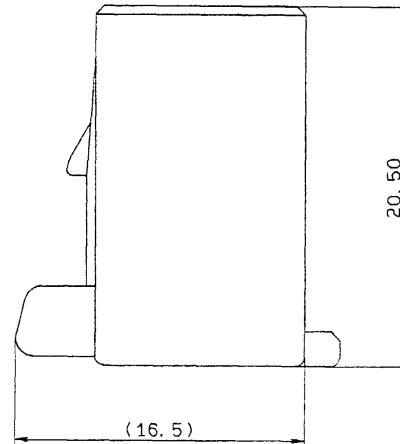
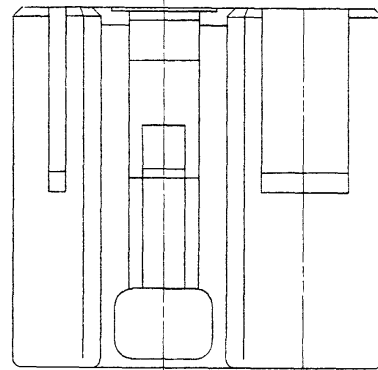
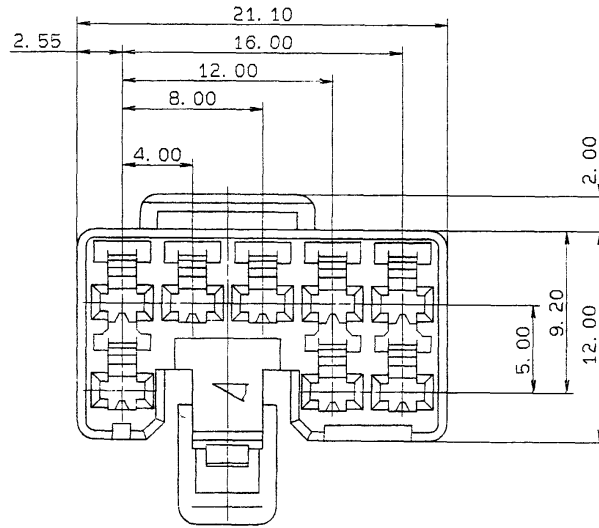


1 2 3 4 5

YAZAKI NO.	COLOR
7123-1480	NATURAL
7123-1480-30	BLACK
7123-1480-40	GRAY
7123-1480-50	ORANGE
7123-1480-60	GREEN
7123-1480-70	YELLOW
7123-1480-80	BROWN
7123-1480-90	BLUE



注記

- 1) 適用端子番: 7116-1180, 7116-1181
- 2) 嵌合相手番: 7122-1480 ETC

NOTES

- 1) APPLICABLE TERMINAL NO. : 7116-1180, 7116-1181
- 2) MATING PART NO. : 7122-1480 ETC

ISSUE MARK

LET	DATE	REVISION RECORD	NO.	CHKD
	88.09.05	NEW	SBC-3120	T.M

GENERAL TOLERANCE						
	10MAX	50MAX	100MAX	250MAX	2500VR	ANGLE
A	±0.15	±0.2	±0.3	±0.5	±0.75	±30'
B	±0.2	±0.3	±0.55	±0.95	±1.4	±30'
∅	±0.3	±0.5	±0.8	±1.4	±2	±30'
						0.15
						WEIGHT

CUSTOMER		MATL. NYLON		TREAT.	
CUSTOMER PART NO.		SPEC.		& FIN.	
OFFICE		STDLIB NO.		NAME 8P 090 FEMALE HOUSING	
VENDOR					
VENDOR NO.					
DWG TYPE	DWG SOURCE	DWG DATE	UNIT	SCL	ANGLE
R	NEW	88.08.31	mm	5/1	3
APPROVED	CHECKED	CHECKED	DESIGN	DRAWN	
	加藤 前島		KANEKO	S. YAGI	
PART NO. 7123-1480 ETC.		DWG NO. 7123-1480.R		TRIAL PART NO.	
		YAZAKI CORPORATION			

1 2 3 4 5