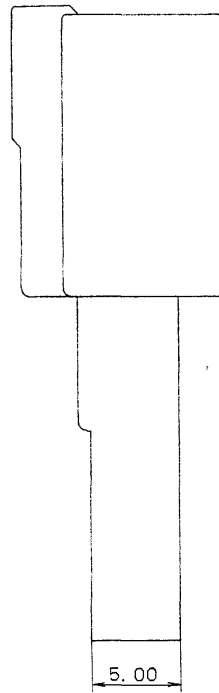
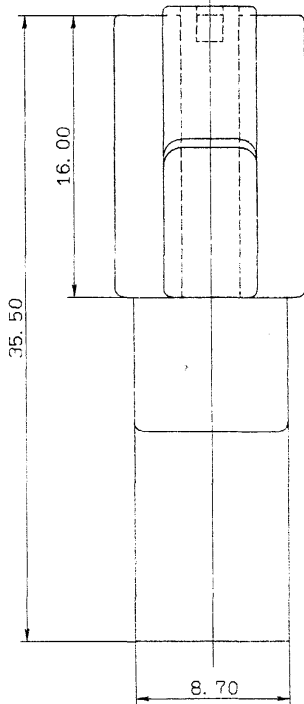
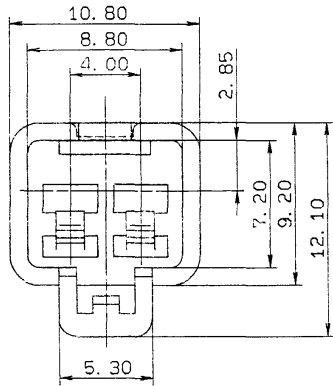


YAZAKI PARTS NO.	COLOR
7122-7721	NATURAL
△ 7122-7721-30	BLACK
△ 7122-7721-90	BLUE



注記

1) 組付け品番: 7123-7721, 7123-7722

2) 適用品番: 7114-1170, 7114-1171

NOTES

1) MATING PART NO.: 7123-7721, 7123-7722

2) APPLICABLE TERMINAL NO.: 7114-1170, 7114-1171

ISSUE MARK

△ 89.06.06	ADDED PART NO. & RENEW	C89-6924	S. I	
△ 89.02.02	ADDED PART NO. & RENEW	C89-6205	H. K	
88.07.07	N E W	BMC-3004	S. Y	
LET	DATE	REVISION RECORD	NO.	CHKD

GENERAL TOLERANCE						
10MAX	50MAX	100MAX	250MAX	2500VR	ANGLE	ECCENT
A ±0.15	±0.2	±0.3	±0.5	±0.75	±30'	0.1
B ±0.2	±0.3	±0.55	±0.95	±1.4	±30'	0.1
◎ ±0.3	±0.5	±0.8	±1.4	±2	±30'	0.15
SPECIFIED					WEIGHT	

CUSTOMER		MATL.	PBT	TREAT.
CUSTOMER PART NO.	CUSTOMER DWG NO.	SPEC.		& FIN.
OFFICE		NAME 090 2P MALE HOUSING		
VENDOR		STDLIB NO.		
VENDOR NO.				
DWG TYPE	DWG SOURCE	DWG DATE	UNIT	SCL
R	N E W	88.06.16	mm	5/1 3
APPROVED	CHECKED	CHECKED	DESIGN	DRAWN
山梨 行之内	山梨	ASANO	石神	
PART NO. △ 7122-7721 ETC.		DWG NO. 7122-7721:R TRIAL PART NO.		
WEIGHT g		YAZAKI CORPORATION		
89.08.22		89.08.22 85.05.23 89.06.06		