

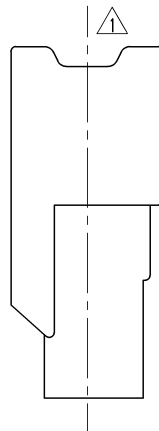
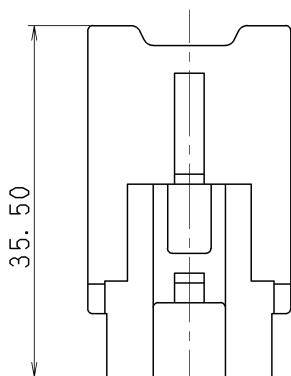
△ NOTES

- △ 1. HANDLING MANUAL NO. YPES-15-042
- 2. MATING PART NO. :
7123-1360 ETC.
- △ 3. DOUBLE LOCK PART NO. OF
7282-1060 ETC. IS RECOMMENDED
TO BE USED.

△ 注記

- 1. 取扱説明書No: YPES-15-042
- 2. かん合相手品番 : 7123-1360 ETC.
- 3. 二重係止品番:7282-1060 ETC.
を使用する事を推奨します。

| YAZAKI PART NO. | COLOR |
|-----------------|------------|
| 7122-1360 | NATURAL |
| 7122-1360-10 | DARK GRAY |
| 7122-1360-30 | BLACK |
| 7122-1360-40 | LIGHT GRAY |
| 7122-1360-50 | ORANGE |
| 7122-1360-60 | GREEN |
| 7122-1360-70 | YELLOW |
| 7122-1360-80 | BROWN |
| 7122-1360-90 | BLUE |



ISSUE MARK

| | | | | | | | | | | | | | | | |
|---|-------|-------------------|--------|------------------|------------|-------------------|----------------------------|-----------|---------------|----------|----------|----------|-------|--------------------|----------------|
| △ 11.01.17 CHANGED PART NAME ETC. C11-ZA22 J. C | | CUSTOMER | | | | MATL. SPEC. NYLON | | | TREAT. & FIN. | | | | | | |
| △ 93.02.02 CHANGED FORM C93-6145 M. P. | | CUSTOMER PART NO. | | CUSTOMER DWG NO. | | | | | | | | | | | |
| 91.04.15 NEW C91-L319 T. M. | | OFFICE | | TRIAL PART NO. | | | NAME △ 6P 090 MALE HOUSING | | | | | | | | |
| LET | DATE | REVISION RECORD | NO. | CHKD | VENDOR | | | | | | | | | | |
| GENERAL TOLERANCE | | | | | VENDOR NO. | | | | | | | | | | |
| | 10MAX | 50MAX | 100MAX | 250MAX | 250OVR | ANGLE | ECCENT | DWG TYPE | DWG SOURCE | DWG DATE | UNIT | SCL | ANGLE | PART NO. | 7122-1360 ETC. |
| A | ±0.15 | ±0.2 | ±0.3 | ±0.5 | ±0.75 | ±30' | 0.1 | R | NEW | 93.02.02 | mm | 2/1 | 3 | DWG NO. | 7122-1360:R |
| B | ±0.2 | ±0.3 | ±0.55 | ±0.95 | ±1.4 | ±30' | 0.1 | APPROVED | CHECKED | CHECKED | DESIGN | DRAWN | | YAZAKI CORPORATION | |
| © | ±0.3 | ±0.5 | ±0.8 | ±1.4 | ±2 | ±30' | 0.15 | M. FUKUDA | O. SUGIYAMA | K. KIDA | KANEKO | J. CANDU | | | |
| SPECIFIED | | | | | MASS | | 11.01.17 | | 11.01.17 | 11.01.17 | 82.12.27 | 11.01.17 | | | |

1

2

3