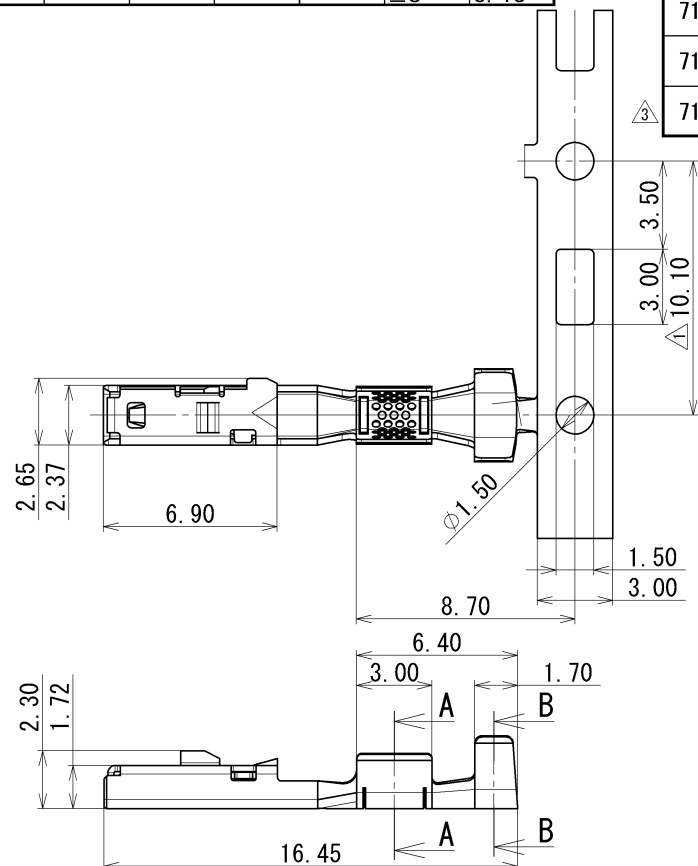


GENERAL TOLERANCE											
	10 MAX	50 MAX	100 MAX	250 MAX	250 OVR	R5 MAX	R10 MAX	R20 MAX	R20 OVR	ANGLE	ECCENT
A	±0.15	±0.2	±0.3	±0.5	±0.75	±0.2	±0.3	±0.5	±2.5	±3°	0.1
B	±0.2	±0.3	±0.55	±0.95	±1.4					±3°	0.1
C	±0.3	±0.5	±0.8	±1.4	±2					±3°	0.15

PART NO. AND CH. CODE	W1	H1	W2	H2	APPLICABLE WIRE SIZE
7116-7389-02, [B]	2.30	(2.20)	3.70	(2.90)	△2 CIVUS 0.35sq~CAVS 0.50sq
7116-7390-02, [B]	3.00	(2.90)	4.20	(3.50)	△3 CIVUS 0.75sq~CAVS 1.25sq ALVUS 0.75sq~1.00sq
7116-7391-02, [B]	4.20	(3.55)	4.50	(3.90)	△5 AVSS 2.00sq ALVUS 1.50sq~ALVSS 2.50sq
7116-7531-02	1.55	(1.65)	2.25	(2.35)	CIVUS 0.13sq~CHFUS 0.22sq

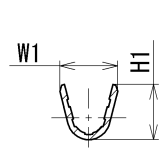


注記

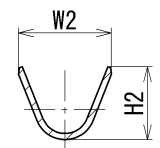
- 1. 相手端子品番 : 7114-7386-02 ETC.
- 2. 適用電線サイズ: 表参照
- △5 3. 2.5sq加締め部を樹脂で覆う場合は適用外とする。

NOTES

- 1. MALE COUNTERPART NO. : 7114-7386-02 ETC.
- 2. APPLICABLE WIRE SIZE : SEE TABLE
- △5 3. NOT APPLICABLE IF CRIMPED PART WITH 2.5sq WIRE IS COVERED WITH RESIN.



SEC. A-A



SEC. B-B

△5	2017/03/22	CHANGED APPLICABLE WIRE SIZE ETC.	C17-P067	Y. H			
△4	2013/01/31	CHANGED TABLE INDICATION	C13-Z051	E. O			
△3	2012/12/07	ADDED PART NO. ETC.	C12-Z942	E. O			
△2	2012/06/18	CHANGED APPLICABLE WIRE	C12-Z529	R. B			
△1	2012/03/14	DELETED PART NO. ETC., [B]	C12-Z312	M. C			
	2011/12/20	NEW	C11-Z712	T. F			
LET	DATE	REVISION RECORD	NO.	CHKD			
GENERAL TOLERANCE							
	10MAX	50MAX	100MAX	250MAX	250OVR	ANGLE	ECCENT
A	±0.15	±0.2	±0.3	±0.5	±0.75	±30'	0.1
B	±0.2	±0.3	±0.55	±0.95	±1.4	±30'	0.1
C	±0.3	±0.5	±0.8	±1.4	±2	±30'	0.15
SPECIFIED							MASS

CUSTOMER		MATERIAL SPEC.		TREAT. & FIN.	
CUSTOMER PART NO.		COPPER ALLOY (t=0.25) TIN PLATING			
OFFICE		CUSTOMER DWG NO.		NAME	
VENDOR		TRIAL PART NO.		060 TERMINAL FEMALE	
VENDOR NO.		DWG TYPE		PART NO.	
		R		7116-7389-02 ETC.	
		DWG SOURCE		CH. CODE	
		NEW		7116-7389-02:R	
		DWG DATE		SET DWG NO.	
		2011/12/20			
		UNIT		YAZAKI CORPORATION	
		mm			
		SCL			
		5:1			
		ANGLE			
		3			
T. MATSUNAGA		K. MATSUMURA		Y. HANAI	
2017/03/22		2011/09/11		2017/03/22	