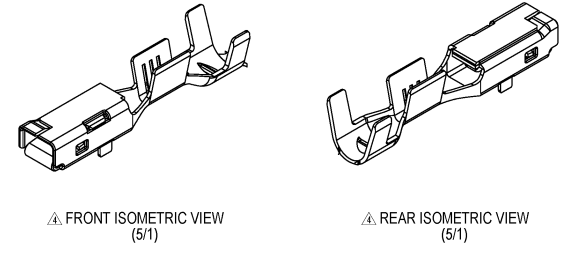
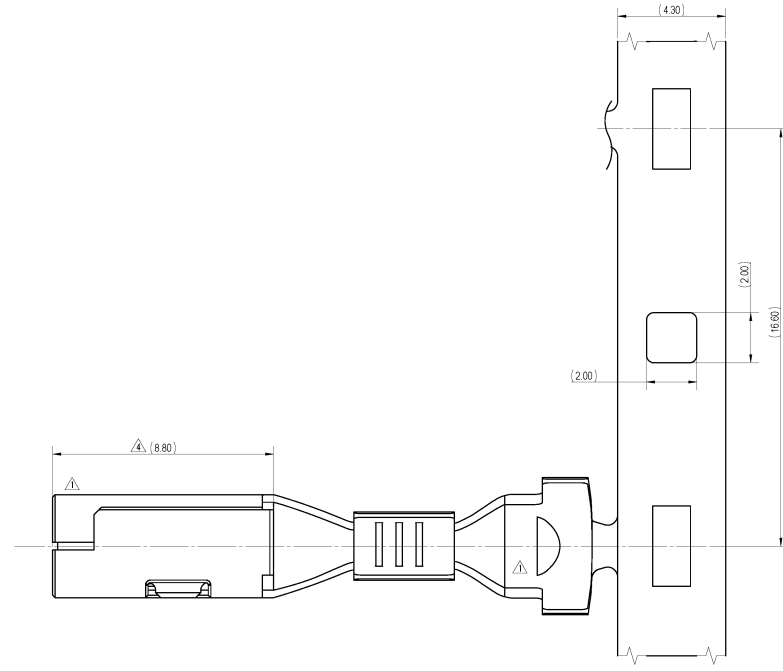
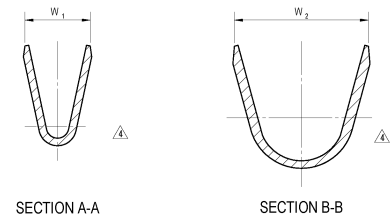
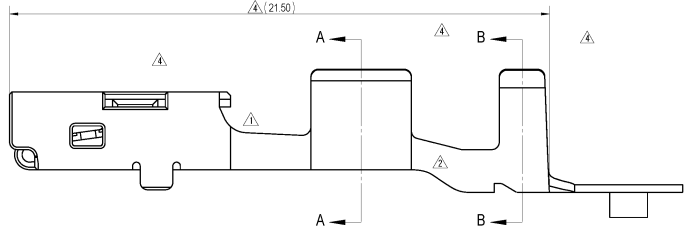
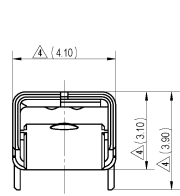


1	2	3	4	5	6	7
APPLICABLE WIRE GRIP SIZE IDENTIFICATION						
(5/1)						
7116-4150-02						
(5/1)						
7116-4151-02						
(5/1)						
7116-4152-02						
(5/1)						
7116-4153-02						

PART NUMBER	APPLICABLE WIRE SIZE (SINGLE CRIMP)	GRIP DIMENSIONS		MASS (g)
	METRIC (mm)	W ₁	W ₂	
7116-4150-02, [A]	3.0-3.6 OR EQUIVALENT	2.30	5.05	(0.70)
7116-4151-02, [A]	3.0-3.6 OR EQUIVALENT	3.00	5.60	
7116-4152-02, [A]	1.5-2.5 OR EQUIVALENT	3.70	6.55	
7116-4153-02, [A]	3.0-4.0	4.30	6.80	



- NOTES:
- PARTS MUST BE PURCHASED FROM YAZAKI.
 - PARTS MUST BE FREE OF BURRS AND SHARP EDGES THAT MAY BE DETRIMENTAL TO SATISFACTORY ASSEMBLY. SAFE HANDLING OR FUNCTION OF THE PART.
 - MATERIAL: COPPER ALLOY.
 - PLATING: TIN (SN) PLATED.
 - MATING PART NUMBER: SEE 7114-4150-02 R DRAWING.
 - APPLICABLE WIRE SEAL: SEE 7108-3111-60 R DRAWING AND 7123-3734-80 R DRAWING.
 - PART TO COMPLY WITH YFES-31-038 REQUIREMENTS.
 - THIS DRAWING IS TO BE USED FOR INTERNAL YAZAKI PSW SUBMISSION.



REV	DATE	REVISION RECORD	NO	CHKD
△	01-22-2021	REDRAWN, ADDED WIRE SIZE & REVISED NOTES	C21-A079	M.S
△	07-10-2003	CHANGED WIRE SIZE	C03-X452	K.O
△	10-21-1999	ADDED PART NUMBER & CHANGED FORM, ETC.	C99-M582	M.K
△	04-15-1997	CHANGED FORM [A]	C97-L641	H.K
△	02-21-1997	NEW	C97-L107	Y.U

GENERAL TOLERANCE											
A	10MAX	50MAX	100MAX	250MAX	250OVR	R5 MAX	R10 MAX	R20 MAX	R20 OVR	ANGLE	ECCENT
	±0.15	±0.20	±0.30	±0.50	±0.75	±0.20	±0.30	±0.50	±2.50	±3°	0.1
B	±0.20	±0.30	±0.55	±0.95	±1.40					±3°	0.15
C	±0.30	±0.50	±0.80	±1.40	±2.00						

CUSTOMER		MATERIAL		TREATMENT	
CUSTOMER PART NO.	CUSTOMER DWG NO.	SPEC	SEE NOTES	8 FIN	SEE NOTES
OFFICE	YNA	NAME	2.8mm SYSTEM SEALED CONNECTOR		
VENDOR	TRIAL PART NO.	FEMALE TERMINAL			
VENDOR NO.		PART NO. 7116-4150-02, ETC.			
DWG TYPE	DWG SOURCE	DWG DATE	UNIT	SCL	ANGLE
R	7116-4150-02 M	02-21-1997	mm	10/1	3
APPROVED	CHECKED	DESIGN	DRAWN	DWG NO. 7116-4150-02:R	
Isabel Muñoz		Y. UCHIDA	MICHELLE SANTILLAN	YAZAKI CORPORATION	
		05.31.1996	02.04.2021		