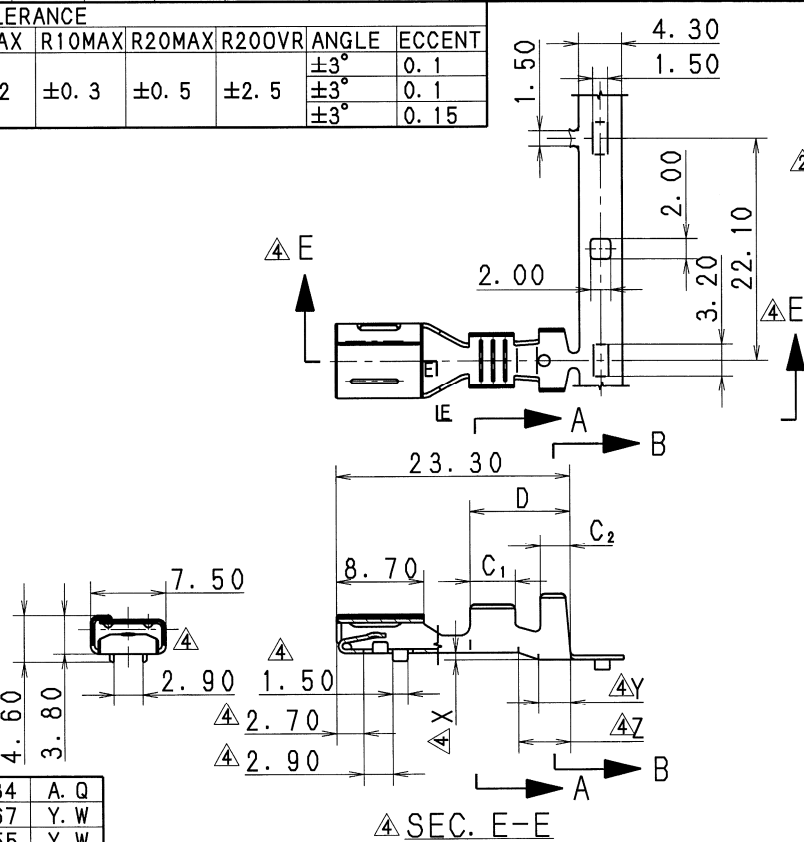
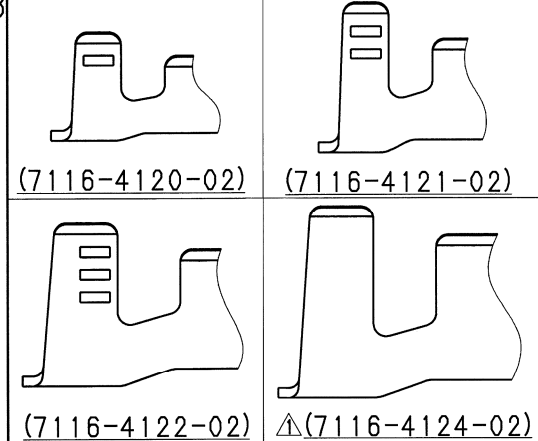


PART NO. AND CH. CODE	R ₁	W ₁	R ₂	W ₂	H ₁	H ₂	C ₁	C ₂	D	X	Y	Z	WIRE SIZE (mm ²)
7116-4120-02	0.70	3.10	0.65	3.70	(3.10)	(4.40)	4.00	2.00	7.75	0.30	(1.90)	(2.90)	0.5~1.25 OR EQUIVALENT
7116-4121-02	0.95	4.00	0.85	4.90	(4.00)	(6.00)	4.00	2.00	7.75	0.50	(1.90)	(2.90)	1.35~2.5 OR EQUIVALENT
7116-4122-02	1.35	5.00	1.30	5.70	(4.80)	(6.70)	4.50	3.00	10.00	0.70	3.20	5.20	2.5~4.0 OR EQUIVALENT
△7116-4124-02	1.35	5.60	1.30	6.60	(5.85)	(7.40)	4.50	3.00	10.00	0.70	3.20	5.20	5.0 OR EQUIVALENT

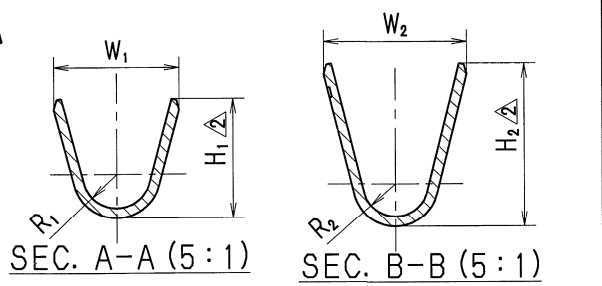
注記
 1. かん合相手品番 : 7114-4120-02 ETC.
 △2. 7116-4124-02においての通電電流値は、4.0 mm² 電線相当以下とする。

△GENERAL TOLERANCE											
	10MAX	50MAX	100MAX	250MAX	250QVR	R5MAX	R10MAX	R20MAX	R20QVR	ANGLE	ECCENT
A	±0.15	±0.2	±0.3	±0.5	±0.75	±0.2	±0.3	±0.5	±2.5	±3°	0.1
B	±0.2	±0.3	±0.55	±0.95	±1.4	±0.2	±0.3	±0.5	±2.5	±3°	0.1
◎	±0.3	±0.5	±0.8	±1.4	±2					±3°	0.15

APPLICABLE WIRE SIZE MARK



NOTES
 1. MATING PART NO. : 7114-4120-02 ETC.
 △2. CURRENT FOR 7116-4124-02 SHALL BE THE CURRENT FOR 4.0 mm² WIRE OR UNDER.



△	2017/03/10	CHANGED APPLICABLE WIRE SIZE, ETC.	C17-Z084	A. Q				
△	2006/03/22	CHANGED TOLERANCE	C06-Z267	Y. W				
△	2005/12/16	CHANGED TOLERANCE, ETC.	C05-ZF55	Y. W				
△	2003/07/10	CHANGED WIRE SIZE	C03-X451	K. O				
△	1999/10/21	ADDED DIMENSION, ETC.	C99-M579	M. K				
△	1997/10/09	ADDED PART NO., ETC.	C97-N131	H. K				
△	1995/08/28	NEW	C95-M160	I. I				
LET	DATE	REVISION RECORD	NO.	CHKD				
GENERAL TOLERANCE								
	10MAX	50MAX	100MAX	250MAX	250QVR	ANGLE	ECCENT	
A	±0.15	±0.2	±0.3	±0.5	±0.75	±30'	0.1	
B	±0.2	±0.3	±0.55	±0.95	±1.4	±30'	0.1	
C	±0.3	±0.5	±0.8	±1.4	±2	±30'	0.15	
SPECIFIED					MASS	g		

CUSTOMER		MATERIAL		TREAT.	
CUSTOMER PART NO.		COPPER ALLOY		TIN PLATING	
CUSTOMER DWG NO.		SPEC. (t=0.40)			
OFFICE		NAME		△6.3 SYSTEM FEMALE	
VENDOR		TRIAL PART NO.		TERMINAL	
VENDOR NO.		DWG TYPE		DWG SOURCE	
		R		NEW	
		DWG DATE		UNIT	
		1995/08/28		mm	
		SCL		ANGLE	
		2:1		3	
		PART NO.		7116-4120-02 ETC.	
		CH. CODE			
		APPROVED		DRAWN	
		DESIGN		DRAWN	
N. TAGUCHI		N. AKEDA		A. QUIROL	
2017/03/10		1995/05/29		2017/03/10	

ISSUE MARK	
PART NO. 7116-4120-02 ETC.	
CH. CODE	
DWG NO. 7116-4120-02:R	
SET DWG NO.	
YAZAKI CORPORATION	