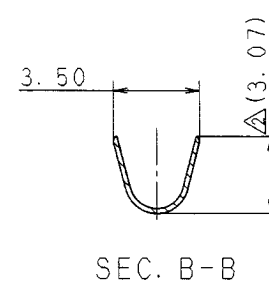
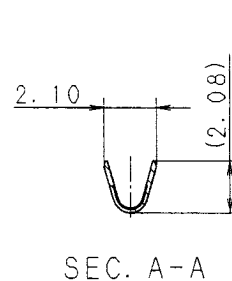
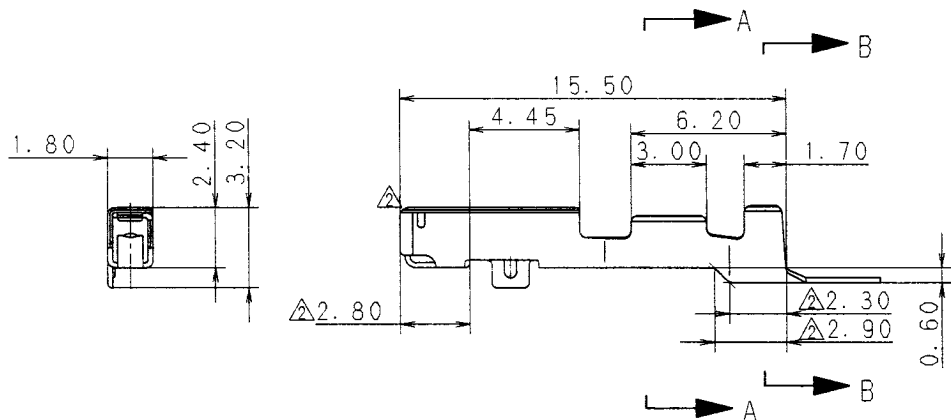


注記

- 1. 適用電線サイズ:CAVS 0.3.0.5. AVS 0.3
- 2. 嵌合相手品番 :7114-4060-02
- 3. 適用ゴム栓品番:7157-3920

NOTES

- 1. APPLICABLE WIRE SIZE:CAVS 0.3.0.5. AVS 0.3
- 2. MATING PART NO. :7114-4060-02
- 3. APPLICABLE RUBBER STOPPER NO. :7157-3920



ISSUE MARK

Δ	98.08.04	CHANGED FORM. NOTE & DIMENSION	C97-N448	H. K	CUSTOMER		MATL. Δ C5210 (t=0.20)	TREAT. & FIN.						
Δ	95.10.30	CHANGED FORM. Δ	C95-M832	Y. Y	CUSTOMER PART NO.	CUSTOMER DWG NO.	SPEC. TIN PLATING							
	89.09.04	NEW	C89-L913	M. H	OFFICE	TRIAL PART NO.	NAME 050 SEALED TERMINAL FEMALE							
LET	DATE	REVISION RECORD	NO.	CHKD	VENDOR									
GENERAL TOLERANCE				VENDOR NO.										
	10MAX	50MAX	100MAX	250MAX	2500VR	ANGLE	ECCENT	DWG TYPE	DWG SOURCE	DWG DATE	UNIT	SCL	ANGLE	PART NO.
A	± 0.15	± 0.2	± 0.3	± 0.5	± 0.75	$\pm 30'$	0.1	R	NEW	89.09.04	mm	$\Delta 5/1$	3	7116-4060-02, Δ
B	± 0.2	± 0.3	± 0.55	± 0.95	± 1.4	$\pm 30'$	0.1	APPROVED	CHECKED	CHECKED	DESIGN	DRAWN	DWG NO.	7116-4060-02 : R
C	± 0.3	± 0.5	± 0.8	± 1.4	± 2	$\pm 30'$	0.15	加藤	山梨	栗福	S. INABA	M. YASUDA	SET DWG NO.	
SPECIFIED				MASS	g	98.8.27	98.08.25	98.08.18	89.08.02	98.08.04	YAZAKI CORPORATION			

