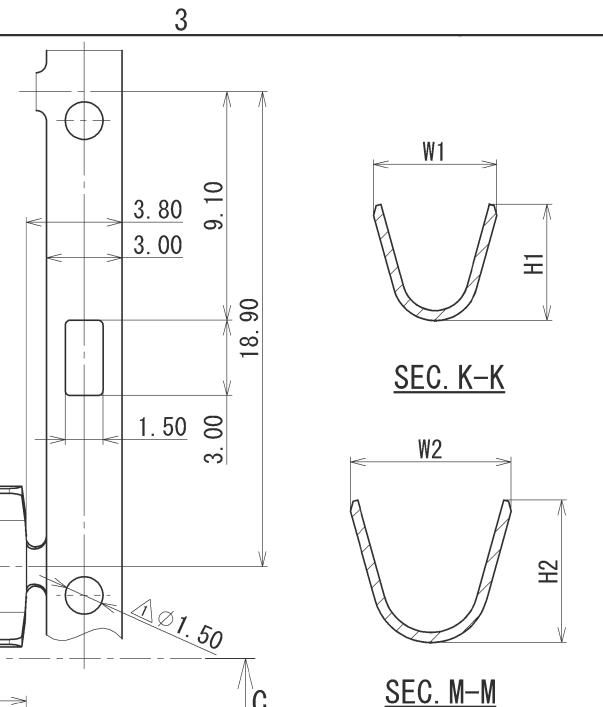


PART NO. AND CH. CODE	△ W1 ±0.4	△ W2 ±0.4	H1	H2	A	B	WIRE SIZE	△ MATERIAL
7116-4030 (7B16-4030)	2.90	3.90	△ (2.62)	△ (3.43)	3.00	6.20	AVS/CAVS 0.3~0.5 CHFUS 0.35~0.5, HFSS 0.5	BRASS(t=0.40)
7116-4031 (7B16-4031)	3.60	4.70	△ (3.34)	△ (4.20)	4.00	7.20	AVS 0.5~1.25, AVSS 0.75~1.25 CAVS 0.85~1.25, CHFUS/HFSS 0.75~1.5	BRASS(t=0.40)
7116-4032	4.90	6.40	△ (4.63)	△ (5.66)	4.00	7.20	AVS 2~3 HFSS 2, HF 3	BRASS(t=0.40)
7196-1064-02	4.90	6.40	(4.63)	(5.66)	4.00	7.20	AVS 2~3 IVSSH 3	COPPER ALLOY(t=0.40)



B

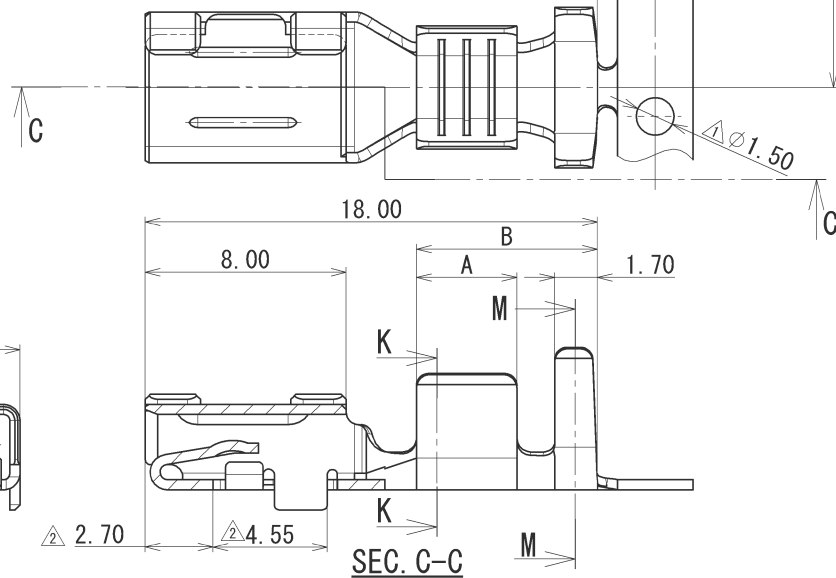
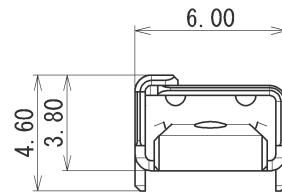
注記

1. かん合相手品番 : 7114-4030 ETC.
- △ 2. ( )内品番は、エアバック回路及び特別管理回路に使用する時に適用すること。

NOTES

1. MATING PART NO. : 7114-4030 ETC.
- △ 2. ( )PART NO. IS USED FOR PARTS ASSOCIATED WITH A/B CIRCUITS OR OTHER SPECIFIED CIRCUIT.

A



△ 5	2016/11/28	ADDED PART NO.	C16-P295	M. S
△ 4	2007/02/19	CORRECTION OF CLERICAL ERROR	C07-Z148	H. I
△ 3	2006/12/19	CHANGED WIRE SIZE, ETC.	C06-ZD41	H. I
△ 2	1998/07/18	CHANGED DIMENSION & NOTE	C97-N460	H. K
△ 1	1997/01/20	CHANGED FORM & ADDED A/B PART NO.	C97-L057	H. K
	1988/12/24	NEW	C89-L002	K. J
LET	DATE	REVISION RECORD	NO.	CHKD

CUSTOMER		MATL. SPEC. △ SEE TABLE	TREAT. & FIN. △ TIN PLATING
CUSTOMER PART NO.		CUSTOMER DWG NO.	
OFFICE		TRIAL PART NO.	
VENDOR			
VENDOR NO.			

GENERAL TOLERANCE						DWG TYPE	DWG SOURCE	DWG DATE	UNIT	SCL	ANGLE	PART NO. CH. CODE	DWG NO.	SET DWG NO.			
A	±0.15	±0.2	±0.3	±0.5	±0.75	±30'	O. 1	R	NEW	1988/11/14	mm				5:1	3	△ 7116-4030 ETC. (7B16-4030 ETC.)
B	±0.2	±0.3	±0.55	±0.95	±1.4	±30'	O. 1	APPROVED	CHECKED	CHECKED	DESIGN	DRAWN	S. SUZUKI	M. NAGANO	Y. IKEDA	SUEYOSHI	
③	±0.3	±0.5	±0.8	±1.4	±2	±30'	O. 15										YAZAKI CORPORATION
SPECIFIED						MASS											

1

2

3



ISSUE MARK