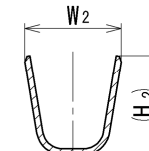
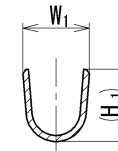
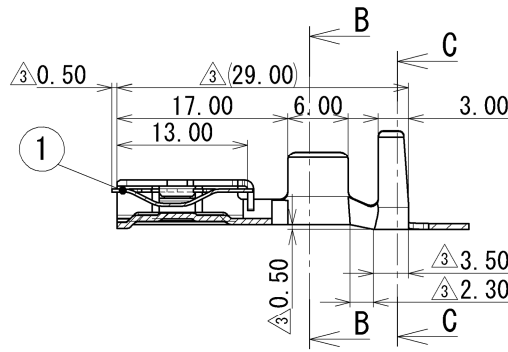
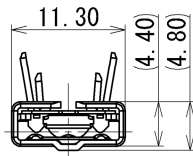
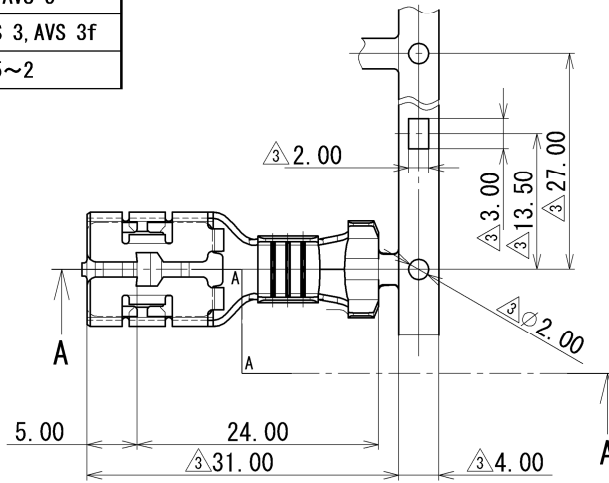


PART NO. AND CH. CODE	W ₁	H ₁	W ₂	H ₂	APPLICABLE WIRE SIZE
7116-3250	6.60	(7.20)	9.60	(9.80)	④ AV 5~8, AVS 5
7116-3251	4.80	(5.20)	7.20	(8.80)	④ AV 3, AVS 3, AVS 3f
7116-3252	4.00	(4.30)	7.20	(8.80)	FLW 0.85~2

YAZAKI PART NO. AND CH. CODE	NO.	MATERIAL
7116-3250 ETC.	-	COPPER ALLOY (t=0.60) TIN PLATING
7157-7270	①	STAINLESS STEEL (t=0.30)



SEC. A-A

注記

1. かん合オスターミナルNO. : 7114-3250 ETC.

NOTE

1. MATING MALE TERMINAL NO. : 7114-3250 ETC.

LET	DATE	REVISION RECORD	NO.	CHKD
⑤	2018/09/25	DELETED PART NO., ETC.	C18-P326	Y. M
④	2016/08/04	CHANGED APPLICABLE WIRE SIZE, ETC.	C16-Z607	A. Q
③	2006/02/27	ADDED PART NO., ETC.	C06-Z227	K. U
②	1996/08/07	CHANGED DIMENSION	C96-6845	H. K
①	1993/11/08	CHANGED DWG. NO, ETC.	C93-7089	Y. I
	1988/03/16	NEW	8MC-4033	M. Y

CUSTOMER		MATL. SPEC.	SEE TABLE	TREAT. & FIN.	SEE TABLE
CUSTOMER PART NO.		CUSTOMER DWG NO.		NAME ④ L TYPE FEMALE TERMINAL	
OFFICE		TRIAL PART NO.		VENDOR	
VENDOR		VENDOR NO.		PART NO. 7116-3250 ETC.	

GENERAL TOLERANCE								DWG TYPE	DWG SOURCE	DWG DATE	UNIT	SCL	ANGLE	PART NO.	
A	±0.15	±0.2	±0.3	±0.5	±0.75	±30'	0.1	R	NEW	1988/03/16	mm	2:1	3	7116-3250 ETC.	
B	±0.2	±0.3	±0.55	±0.95	±1.4	±30'	0.1	APPROVED	CHECKED	CHECKED	DESIGN	DRAWN	DWG NO.	① 7116-3250:R	
③	±0.3	±0.5	±0.8	±1.4	±2	±30'	0.15	M. NAKAMURA			INABA	Y. MAEDA	SET DWG NO.		
SPECIFIED								MASS	⑤ (3.5) g	2018/09/25			1982/08/13	2018/09/25	YAZAKI CORPORATION

1

2

3