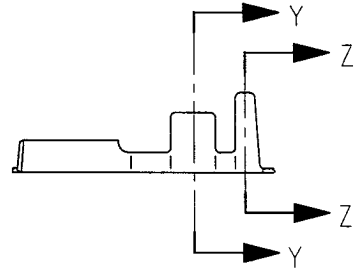
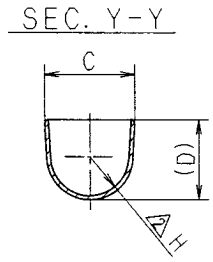
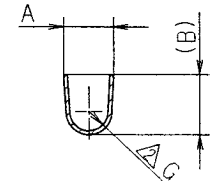
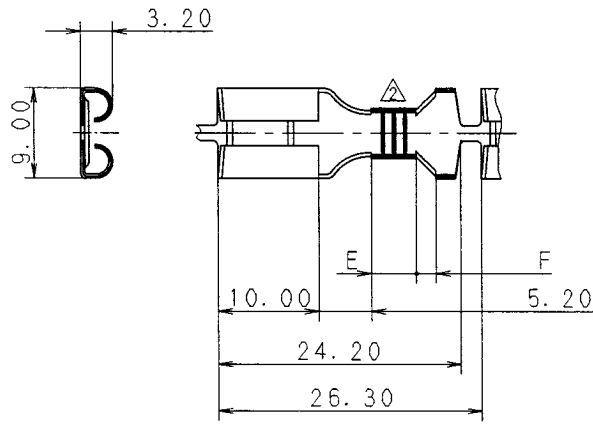


YAZAKI PART NO.	A	(B)	C	(D)	E	F	△G	△H	MATERIAL	REMARK
7116-3190	3.70	3.39	5.50	4.71	4.00	2.50	R1.40	R1.60	C2600R t=0.40	AV 0.5~2
7116-3190-02 △(7B16-3190-02)	3.70	3.39	5.50	4.71	4.00	2.50	R1.40	R1.60	C2600R t=0.40 TIN PLATE	AV 0.5~2
7116-3191	5.00	6.00	9.00	7.97	4.50	2.00	R1.90	R3.90	C2600R t=0.40	AV 3~5
7116-3191-02	5.00	6.00	9.00	7.97	4.50	2.00	R1.90	R3.90	C2600R t=0.40 TIN PLATE	AV 3~5
7116-3192-02	3.70	3.39	5.50	4.71	4.00	2.50	R1.40	R1.60	C5210R t=0.40 TIN PLATE	AV 0.5~2
7116-3193-02	5.00	6.00	9.00	7.97	4.50	2.00	R1.90	R3.90	C5210R t=0.40 TIN PLATE	AV 3~5



7116-3190
7116-3190-02
△(7B16-3190-02)
7116-3191 7116-3192-02
7116-3191-02 7116-3193-02

注記

- 1) 嵌合相手品番: 7114-3190, 7114-3191
- △ 2) A/B品番は、A/B回路及び、特別管理回路に使用すること。

NOTES

- 1) MATING PART NO.: 7114-3190, 7114-3191
- △ 2) A/B PART NO. IS USED FOR PART THAT IS UNDER SPECIAL SUPERVISION AND A/B SYSTEM.

ISSUE MARK

△	98.02.20	CORRECTION OF A CLERICAL ERROR	C98-L341	I. I
△	96.08.19	CHANGED FORM & ADDED A/B PART NO.	C96-M621	M. T
△	93.04.23	RENEW	C93-L478	I. I
LET	DATE	REVISION RECORD	NO.	CHKD

CUSTOMER		MATL. SPEC.	SEE TABLE	TREAT. & FIN.
CUSTOMER PART NO.		NAME		
CUSTOMER DWG NO.		305 (7.8MM) TERMINAL FEMALE		
OFFICE		TRIAL PART NO.		
VENDOR		VENDOR NO.		

GENERAL TOLERANCE								DWG TYPE	DWG SOURCE	DWG DATE	UNIT	SCL	ANGLE	PART NO.
	10MAX	50MAX	100MAX	250MAX	250QVR	ANGLE	ECCENT	R	NEW	93.04.23	mm	2/1	3	7116-3190 ETC.
A	±0.15	±0.2	±0.3	±0.5	±0.75	±30'	0.1	APPROVED	CHECKED	CHECKED	DESIGN	DRAWN	DWG NO.	7116-3190:R
B	±0.2	±0.3	±0.55	±0.95	±1.4	±30'	0.1	加藤	桐野	明田	TAKENO	IMAI		
◎	±0.3	±0.5	±0.8	±1.4	±2	±30'	0.15	加藤	桐野	明田	UCHI			
SPECIFIED							MASS	98.3.3	98.03.03	98.03.03	80.01.11	98.02.20	YAZAKI CORPORATION	