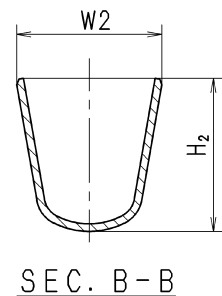
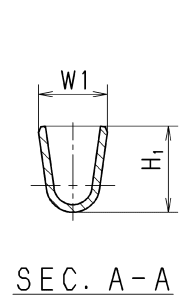
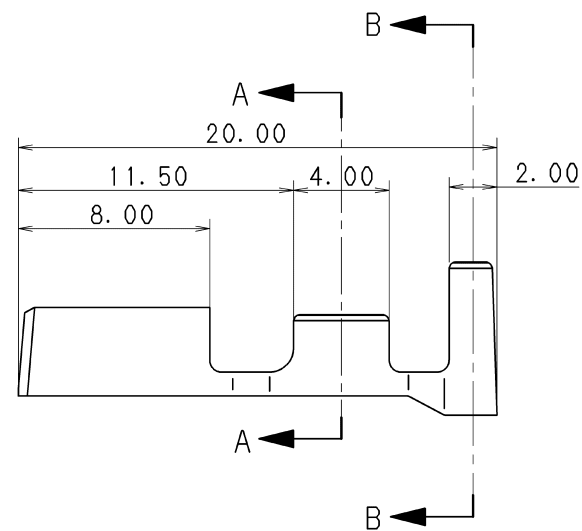


PART NO.	W <sub>1</sub>	W <sub>2</sub>	H <sub>1</sub>	H <sub>2</sub>	APPLICABLE WIRE SIZE	TREAT. & FIN.
7116-2873	2.9	6.1	(3.0)	(5.3)	AVS 0.5~ AV 1.25	
7116-2873-02						TIN PLATING
7116-2874	4.1	8.0	(4.1)	(6.9)	AVS 2~ AV 3	
7116-2874-02						TIN PLATING

注記  
 1) かん合雄端子品番 : 7114-2873 ETC.  
 2) 適用コ<sup>△</sup>△栓品番 : 7157-3570 ETC.

NOTES  
 1) MATING MALE TERMINAL NO. : 7114-2873 ETC.  
 2) APPLICABLE SEAL RUBBER NO. : 7157-3570 ETC.



△	10.12.15	ADDED TREATMENT, ETC.	C10-Z737	K. U					ISSUE MARK							
△	94.03.08	CORRECTION OF A CLERICAL ERROR	C94-L405	H. K	CUSTOMER		MATERIAL SPEC. △ BRASS (t=0.32)		TREAT. & FIN. △ SEE TABLE							
△	93.09.15	ADDED PART NO.	C93-P145	H. F	CUSTOMER PART NO.		CUSTOMER DWG NO.		NAME X TYPE TERMINAL F							
	89.02.07	NEW	C89-L260	T. M	OFFICE		TRIAL PART NO.		-----							
LET	DATE	REVISION RECORD	NO.	CHKD	VENDOR		VENDOR NO.		-----							
GENERAL TOLERANCE																
	10MAX	50MAX	100MAX	250MAX	2500VR	ANGLE	ECCENT	DWG TYPE	DWG SOURCE	DWG DATE	UNIT	SCL	ANGLE	PART NO.	7116-2873 ETC.	
A	±0.15	±0.2	±0.3	±0.5	±0.75	±30'	0.1	R	NEW	89.02.09	mm	5:1	3	CH. CODE	7116-2873 ETC.	
B	±0.2	±0.3	±0.55	±0.95	±1.4	±30'	0.1	APPROVED	CHECKED	CHECKED	DESIGN	DRAWN	DWG NO.	7116-2873:R SET DWG NO.		
©	±0.3	±0.5	±0.8	±1.4	±2	±30'	0.15	M. KASHIYAMA	K. URANO		ISHIZUKA	J. GAMBOA	YAZAKI CORPORATION			
SPECIFIED					MASS			10.12.15	10.12.15		82.05.01	10.12.15				

1 2 3