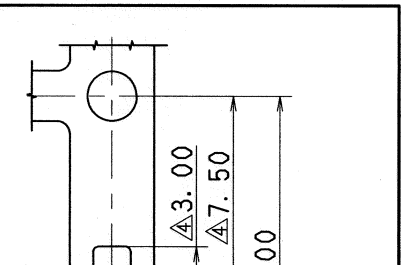
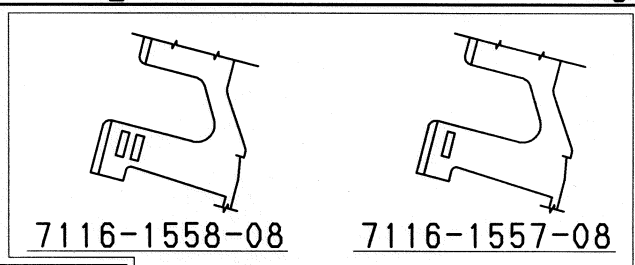


△ PART NO. AND CH. CODE	TREATMENT	△ I	△ J	△ K	△ L	WIRE SIZE
7116-1521	TIN PLATING	5.60	6.00	3.80	3.60	AVS1.25~AVSS2 EQUIVALENT
7116-1521-08	GOLD PLATING					
△ 7116-1558-08	GOLD PLATING	5.10	5.60	2.90	2.20	△ AVS0.5~AV0.85 EQUIVALENT
7116-1520	TIN PLATING					
7116-1520-08	GOLD PLATING					
△ 7116-1557-08	GOLD PLATING			△ 3.10	△ 2.70	

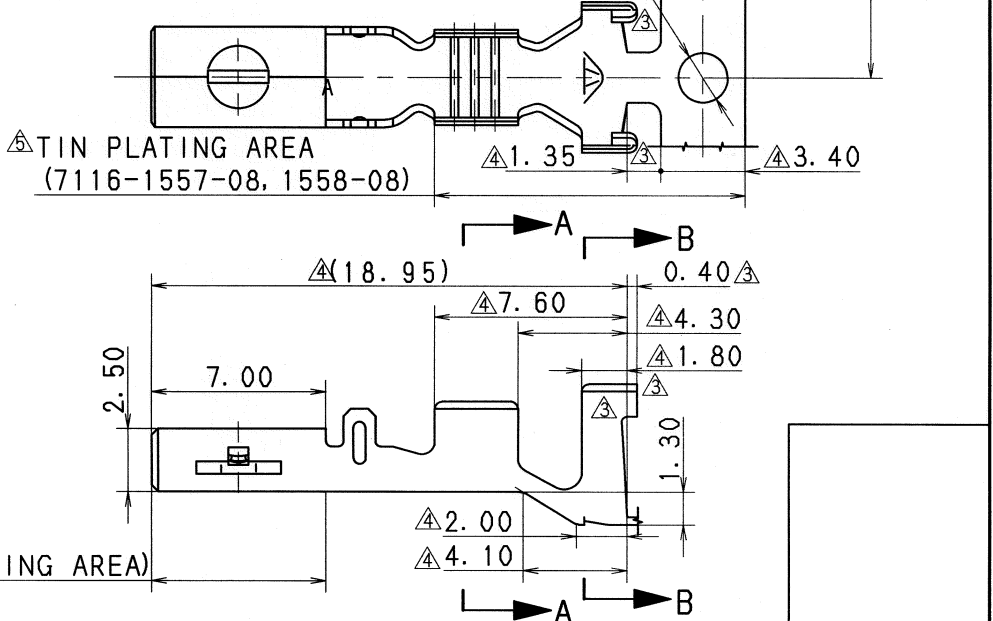
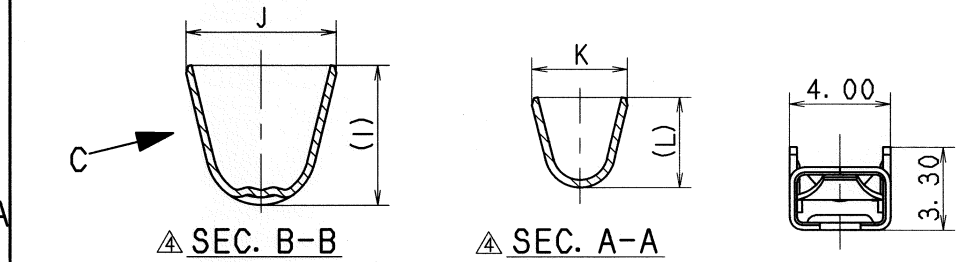


△ GENERAL TOLERANCE											
	10MAX	50MAX	100MAX	250MAX	250OVR	R5MAX	R10MAX	R20MAX	R20OVR	ANGLE	ECCENT
A	±0.15	±0.2	±0.3	±0.5	±0.75	±0.2	±0.3	±0.5	±2.5	±3°	0.1
B	±0.2	±0.3	±0.55	±0.95	±1.4					±3°	0.1
△ C	±0.3	±0.5	±0.8	±1.4	±2					±3°	0.15



- △ 注記
- 本品は、バネ片 (7157-8608, -8608-08) と構成する。
 - 嵌合相手端子: 7114-1230 (Sタイプターミナル)

- △ NOTES
- THIS PART MUST BE ASSEMBLED WITH SPRING (7157-8608, -8608-08).
 - MATING PART TERMINAL: 7114-1230 (S TYPE TERMINAL)



△ 05/10/05	CHANGED PART NO. TABLE, ETC.	C05-ZC97	Y. W
△ 01/02/12	ADDED DIMENSION & PART NO.	C01-X123	H. T
△ 90/09/04	CHANGED FORM	C90-L994	T. S
△ 90/04/09	CHANGED APPLICABLE WIRE SIZE	C90-L238	M. K
△ 89/06/08	表題欄及び部品欄変更	C89-6948	大崎
87/11/20	新設	7MC-0790	石井

△ 7.00 (GOLD PLATING AREA)		ISSUE MARK	
CUSTOMER		MATL. SPEC.	TREAT. & FIN.
CUSTOMER PART NO.	CUSTOMER DWG NO.	△ BRASS (t=0.3)	SEE TABLE
OFFICE	TRIAL PART NO.	NAME △ DMS TERMINAL	
VENDOR	VENDOR NO.		

GENERAL TOLERANCE												DWG TYPE				DWG SOURCE				DWG DATE				UNIT		SCL		ANGLE		PART NO.	
	10MAX	50MAX	100MAX	250MAX	250OVR	ANGLE	ECCENT																								
A	±0.15	±0.2	±0.3	±0.5	±0.75	±30'	0.1	R	NEW	87/01/28	mm	4	5:1	3	PART NO. 7116-1520 ETC.																
B	±0.2	±0.3	±0.55	±0.95	±1.4	±30'	0.1	APPROVED	CHECKED	CHECKED	DESIGN	DRAWN	DWG NO. △ 7116-1520:R		SET DWG NO.																
C	±0.3	±0.5	±0.8	±1.4	±2	±30'	0.15	E. PANTONI		R. M. GALIZZI		YAZAKI CORPORATION																			
SPECIFIED							MASS	g		05.10.25	05.10.29	05.10.06	87/11/20	05/10/05																	