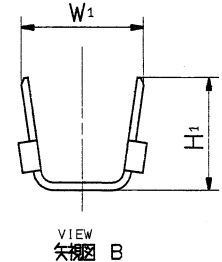
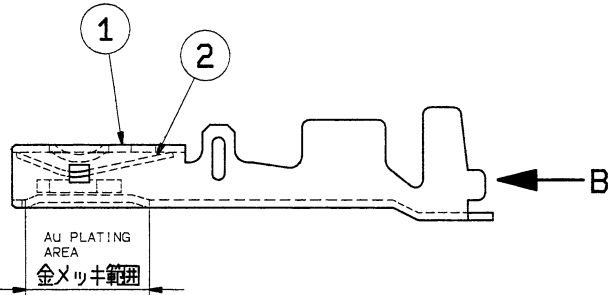
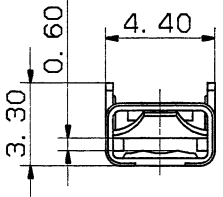
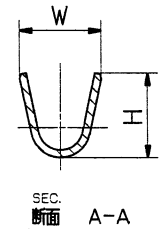
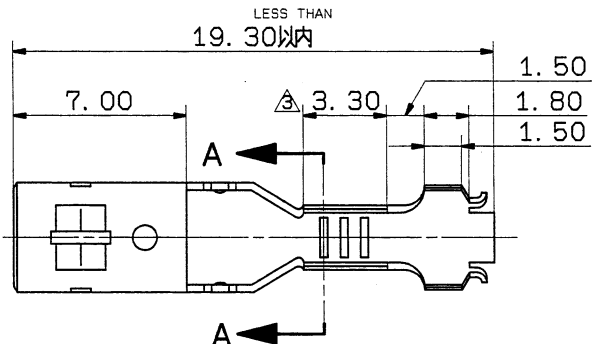


1

2

3

YAZAKI PART NO. 矢崎品番	APPLICABLE WIRE SIZE 電線サイズ	W	H	W1	H1	MATERIAL 材質	TREATMENT 表面処理
7116-1342	0.3~0.5SQ	2.6	2.5	4.2	3.7	BODY 本体 DK-3	SPRING バネ部 C1720
7116-1343 (7B16-1343)	0.85~2.0SQ	3.3	3.6	5.0	4.5	BODY 本体 DK-3	SPRING バネ部 C1720



注記

- ① の ターミナル本体
- ② の ターミナルバネ部
- () 内品番はエアバック回路及び特別格付け回路で使用スル時二適用スルコト。

NOTES

- ① : TERMINAL BODY
- ② : TERMINAL SPRING
- IN THE CASE OF A/B CIRCUITS AND CONTROL CIRCUITS USE PART NO. ().

ISSUE MARK

				CUSTOMER				MATL. SPEC.				TREAT. & FIN.											
				CUSTOMER PART NO.				SEE TABLE															
				CUSTOMER DWG NO.				NAME				S TYPE HEAVY DUTY											
A 95.11.01 CORRECTED AN ERROR C95-6756 H. K				OFFICE				TRIAL PART NO.				△											
A 90.11.08 RENEW & CHANGED DRAWING C90-M217 M. K				VENDOR				PART NO.				7116-1342 ETC.											
LET DATE REVISION RECORD NO. CHKD				VENDOR NO.				CH. CODE				7116-1342:R											
GENERAL TOLERANCE								PART NO.								7116-1342 ETC.							
								DWG NO.								7116-1342:R							
10MAX 50MAX 100MAX 250MAX 2500VR ANGLE ECCENT								DWG TYPE DWG SOURCE DWG DATE UNIT SCL ANGLE								PART NO. 7116-1342 ETC.							
A ±0.15 ±0.2 ±0.3 ±0.5 ±0.75 ±30' 0.1								R RENEW 87.12.21 mm 5/1 3								CH. CODE 7116-1342:R							
B ±0.2 ±0.3 ±0.55 ±0.95 ±1.4 ±30' 0.1								APPROVED CHECKED CHECKED DESIGN DRAWN								DWG NO. 7116-1342:R							
C ±0.3 ±0.5 ±0.8 ±1.4 ±2 ±30' 0.15								SAKAI 小林								YAZAKI CORPORATION							
SPECIFIED MASS								95.12.24 95.11.1 95.11.1 87.10.02 95.11.1															

1

2

3