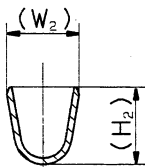
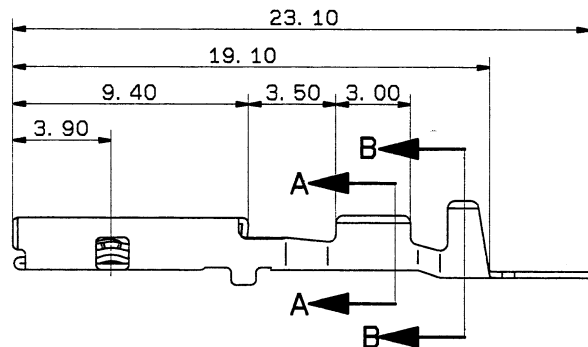
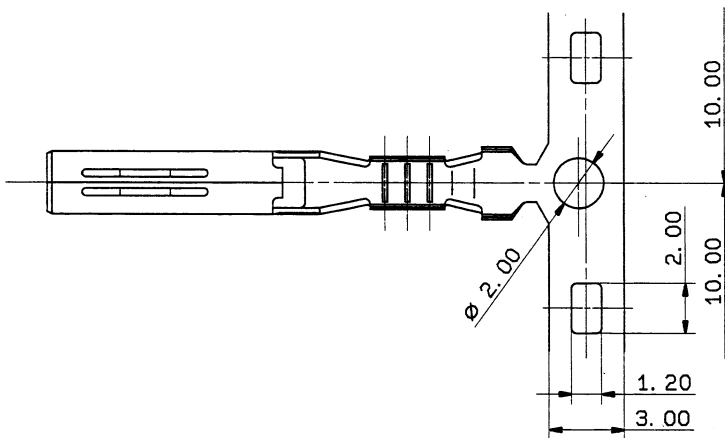
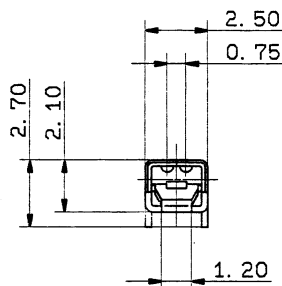


SEC. A-A



SEC. B-B



注 記

- 1) 材 料 : 銅合金(t=0.25) \triangle
- 2) 嵌合相手品番 : 7114-1300 ETC.
- 3) 適用ハウジング品番: 7123-7960 ETC.
- \triangle 4) ()内品番ハ、エアバッグ回路及び特別配線回路ヲ
使用スル時ニ適用スルコト。

NOTES

- 1) MATERIAL. : COPPER ALLOY(t=0.25) \triangle
- 2) MATING PART NO. : 7114-1300 ETC.
- 3) APPLICABLE HOUSING PART NO. : 7123-7960 ETC.
- 4) ()PART NO. TO BE USED AIR-BAG SYSTEM
AND ADMINISTRATION SYSTEM.

YAZAKI PART NO.	APPLICABLE WIRE SIZE	H ₁	H ₂	W ₁	W ₂	TREAT & FIN
\triangle 7116-1300(7B16-1300)	AVS. CAVS 0.2~0.3sq	2.2	3.1	2.1	2.9	TIN-PLATING
\triangle 7116-1301(7B16-1301)	AVS. CAVS 0.5~0.85sq	2.8	3.9	2.5	3.0	TIN-PLATING
\triangle 7116-1301-08	AVS. CAVS 0.5~0.85sq	2.8	3.9	2.5	3.0	GOLD-PLATING

\triangle 93.03.12	CHANGED MATERIAL	C93-6334	M. K
\triangle 91.08.22	ADDED PART NO.	C91-7194	M. K
\triangle 89.07.12	CHANGED COMPOSITION	C89-7105	H. I
\triangle 88.12.08	ADDED PRAT NO. . NOTE	8MC-1541	T. N
— 87.11.16	N E W	7MC-0774	K. A
LET	DATE	REVISION RECORD	NO. CHKD

CUSTOMER		MATERIAL SPEC.		NOTE 1)		TREAT. & FIN.		SEE TABLE	
CUSTOMER PART NO.		CUSTOMER DWG. NO.		NAME		C-TYPE TERMINAL (F)			
OFFICE		STDLIB NO.		VENDOR		VENDOR NO.			

GENERAL TOLERANCE								
	10MAX	50MAX	100MAX	250MAX	2500VR	ANGLE	ECCENT	
A	± 0.15	± 0.2	± 0.3	± 0.5	± 0.75	$\pm 30'$	0.1	
B	± 0.2	± 0.3	± 0.55	± 0.95	± 1.4	$\pm 30'$	0.1	
©	± 0.3	± 0.5	± 0.8	± 1.4	± 2	$\pm 30'$	0.15	
SPECIFIED							WEIGHT	
							g	

DWG TYPE	DWG SOURCE	DWG DATE	UNIT	SCL	ANGLE
R	NEW	87.11.16	mm	5/1	3
APPROVED	CHECKED	CHECKED	DESIGN	DRAWN	
杉 八木	辻 阿部	K. ABE	甲斐		
93.3.12	93.3.12	93.3.12	87.11.16	93.03.12	

PART NO.		7116-1300 ETC.	
DWG NO.		7116-1300:R	
TRIAL PART NO.			
YAZAKI CORPORATION			

ISSUE MARK