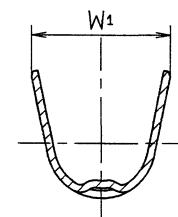
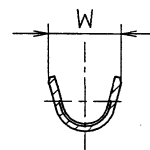
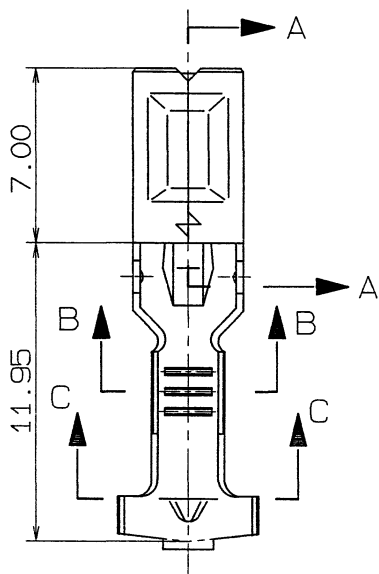
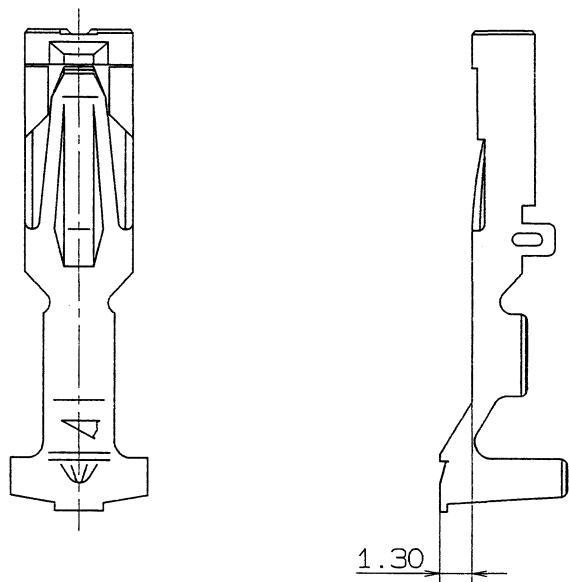
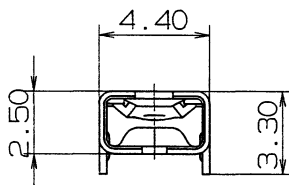
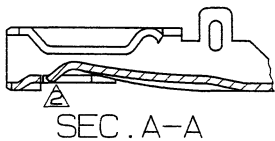


1

2

3



△
△

PART NO.	APPLICABLE WIRE SIZE	W	W1	NOTES
7116-1236	0.3~0.85 SQ	2.9	5.6	TIN PLATING
7116-1237	1.25~2 SQ	3.8	6	TIN PLATING
△ 7116-1236-08	0.3~0.85 SQ	2.9	5.6	GOLD PLATING
△ 7116-1237-08	1.25~2 SQ	3.8	6	GOLD PLATING

注記

1. 略記 WF+H

NOTE

1. AN ABBREVIATION IS WF+H

ISSUE MARK

				CUSTOMER		MATL. SPEC. C5210R-H t=0.3		TREAT. & FIN.						
△	96.01.23	CORRECTION OF A CLERICAL ERROR & ADDED PART NO.	C96-L175	M.T	CUSTOMER PART NO.	CUSTOMER DWG NO.	NAME W TYPE TERMINAL HEAVY							
△	89.09.08	CHANGE DRAWINGS&RENEW	C89-L867	M.K	OFFICE	TRIAL PART NO.	DUTY-F							
LET	DATE	REVISION RECORD	NO.	CHKD	VENDOR	VENDOR NO.								
GENERAL TOLERANCE														
	10MAX	50MAX	100MAX	250MAX	2500VR	ANGLE	ECCENT	DWG TYPE	DWG SOURCE	DWG DATE	UNIT	SCL	ANGLE	PART NO.
A	±0.15	±0.2	±0.3	±0.5	±0.75	±30'	0.1	R	RENEW	89.09.08	mm	5/1	3	7116-1236 ETC.
B	±0.2	±0.3	±0.55	±0.95	±1.4	±30'	0.1	APPROVED	CHECKED	CHECKED	DESIGN	DRAWN	DWG NO.	7116-1236: R
◎	±0.3	±0.5	±0.8	±1.4	±2	±30'	0.15	神田		渡辺	SAKAI	SUMIYA	YAZAKI CORPORATION	
SPECIFIED					MASS	9		96.2.05		96.1.30	86.08.22	96.01.23		

1

2

3

